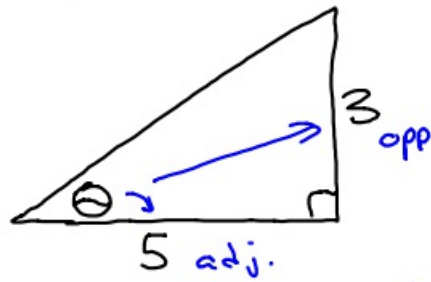


1-10-18 5th Geo

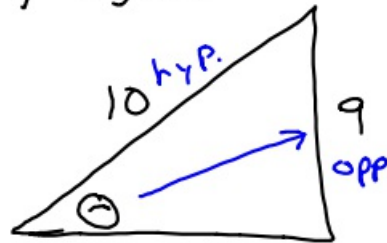
Think!



SOH
CAH
TOA

$$\tan \theta = \frac{3}{5}$$
$$\tan \theta = .6$$

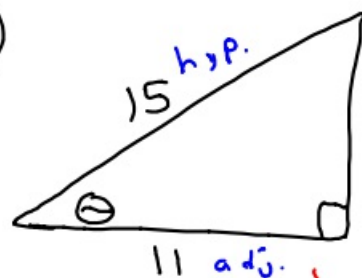
Try again.



SOH
CAH
TOA

$$\sin \theta = \frac{9}{10}$$
$$\sin \theta = .9$$
$$\theta \approx 64.17^\circ$$

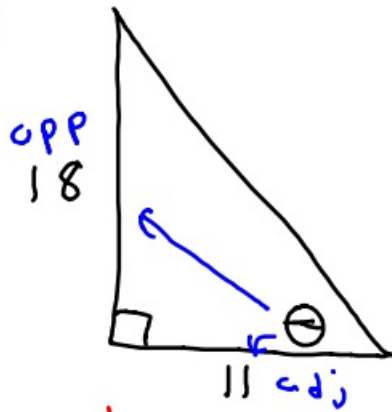
①



SOH
CAH
TOA

$$\cos^{-1} \cos \theta = \frac{11}{15}$$
$$\theta \approx 42.8^\circ$$

②

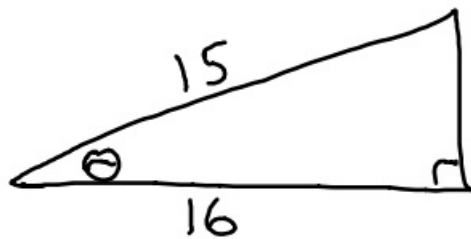


SOH
CAH
TOA

$$\tan^{-1} \tan \theta = \frac{18}{11}$$

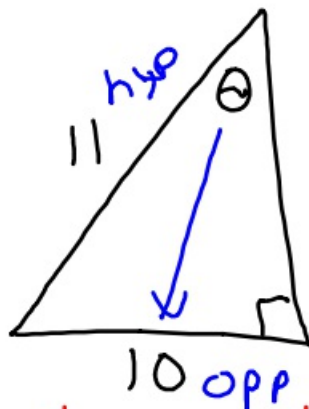
$$\theta \approx 58.6^\circ$$

③



Error
b/c
hypotenuse
can't be
smaller than
side

④

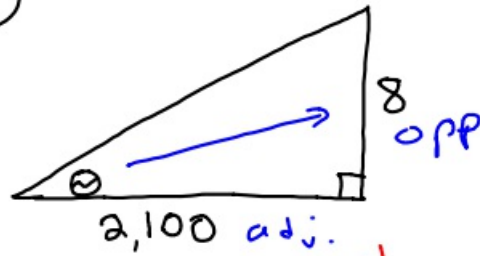


SOH
CAH
TOA

$$\sin^{-1} \sin \theta = \frac{10}{11}$$

$$\theta \approx 65.4^\circ$$

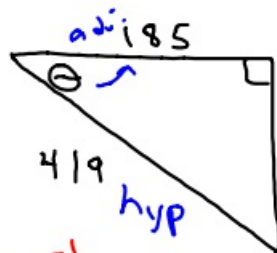
⑤



$$\tan^{-1} \tan \theta = \tan^{-1} \frac{8}{2100}$$

$$\theta \approx .2^\circ$$

⑥



SOH
CAH
TOA

$$\cos^{-1} \cos \theta = \cos^{-1} \frac{185}{419}$$

$$\theta \approx 63.8^\circ$$

Solve for θ .

⑦

$$\sin^{-1} \sin \theta \approx \sin^{-1} .1684$$

$$\theta \approx 9.7^\circ$$

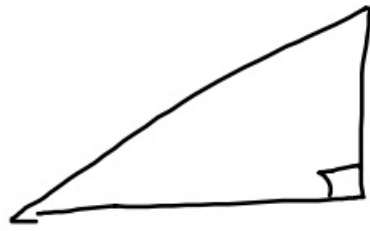
⑧

$$\begin{array}{r} 6 + 4 \sin \theta = 6.14 \\ -6 \qquad \qquad \qquad -6 \\ \hline 4 \sin \theta = .14 \\ \frac{4 \sin \theta}{4} = \frac{.14}{4} \end{array}$$

$$\sin^{-1} \sin \theta = \sin^{-1} .035$$

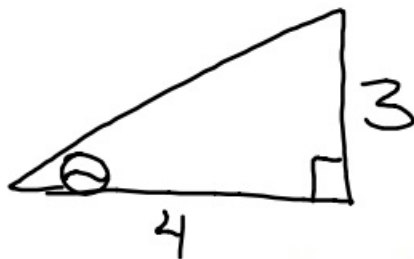
$$\theta \approx 2.0^\circ$$

1-10-18 6th Geo



SOH
CAH
TOA

Think on this one.

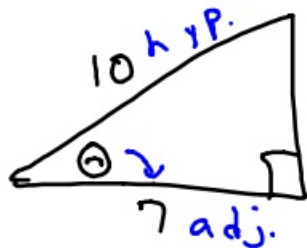


$$\tan \theta = \frac{3}{4}$$

$$\tan \theta = .75$$

$$\theta \approx 36.87^\circ$$

One more, please.



$$\cos \theta = \frac{7}{10}$$

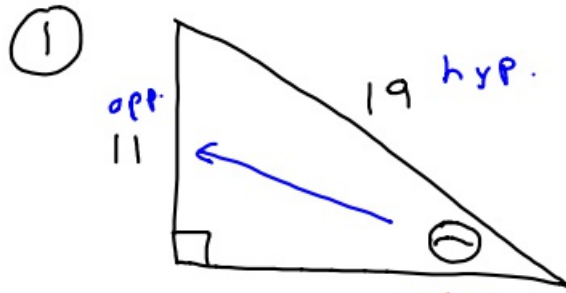
$$\cos \theta = .7$$

$$\theta \approx 45.5^\circ$$

get rid of
hyp. he
smells.

$$\cos^{-1} \cos \theta = .7$$

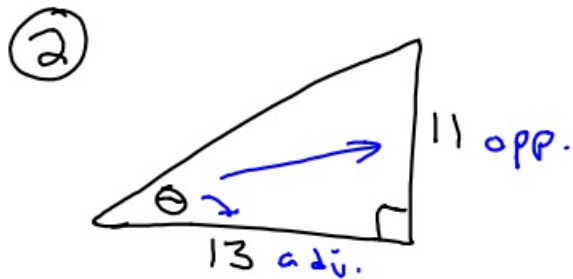
$$\theta \approx 45.57^\circ$$



$$\sin^{-1} \sin \theta = \sin^{-1} \frac{11}{19}$$

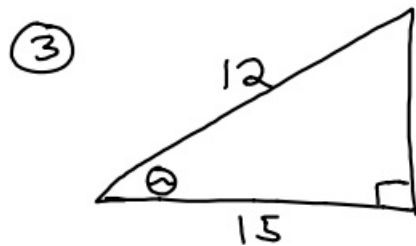
$$\theta = \sin^{-1} \left(\frac{11}{19} \right)$$

$$\theta \approx 35.4^\circ$$



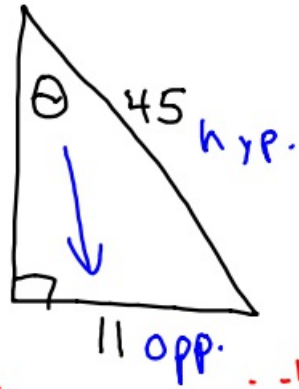
$$\tan^{-1} \tan \theta = \tan^{-1} \frac{11}{13}$$

$$\theta \approx 40.2^\circ$$



Right away we know it can't happen since hyp is smaller than leg.

④

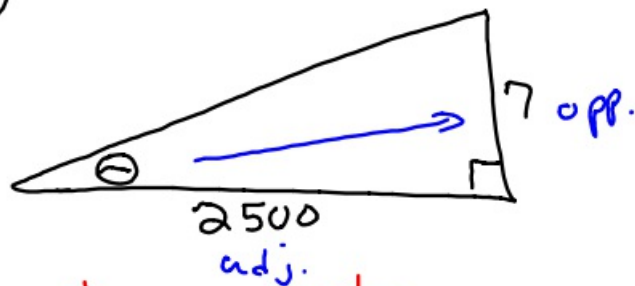


SOH

$$\sin^{-1} \sin \theta = \sin^{-1} \frac{11}{45}$$

$$\theta \approx 14.1^\circ$$

⑤



$$\tan^{-1} \tan \theta = \tan^{-1} \frac{7}{2500}$$

$$\theta = .16$$

⑥ Solve for θ

$$\sin^{-1} \sin \theta = \sin^{-1} .1856$$

$$\theta \approx 10.7^\circ$$