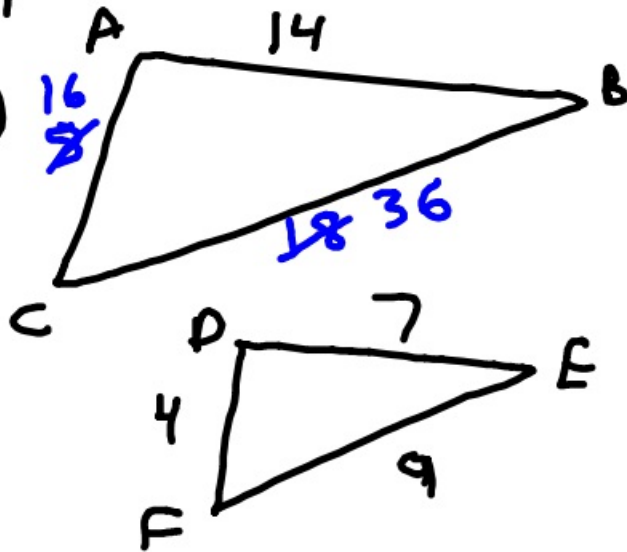


1-9-19 5<sup>th</sup> Geo

7-4

(11)



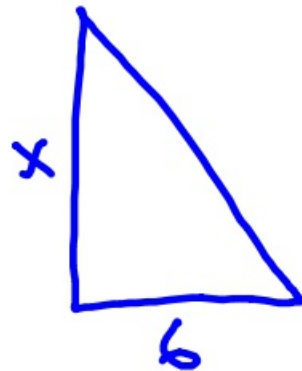
$$\frac{BC}{AC} = \frac{1}{2}$$

$$\frac{BC}{AC} = \frac{9}{4} \checkmark$$

$$AC = 18 \quad BC = 8$$

$$AC = 8 \quad \text{and} \quad BC = 18$$

(12)



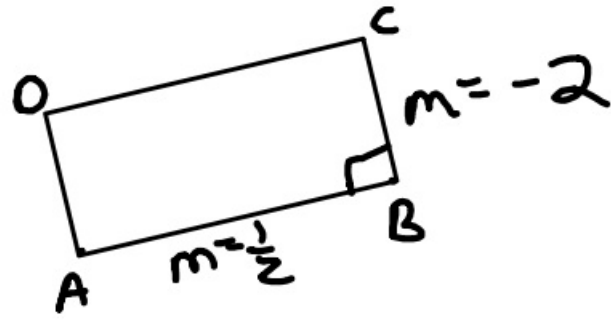
$$\frac{6}{x} = \frac{2}{6}$$

$$2x = 36$$

$$x = 18$$

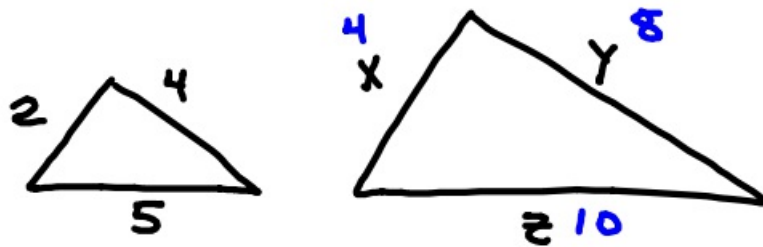
4-5

⑥



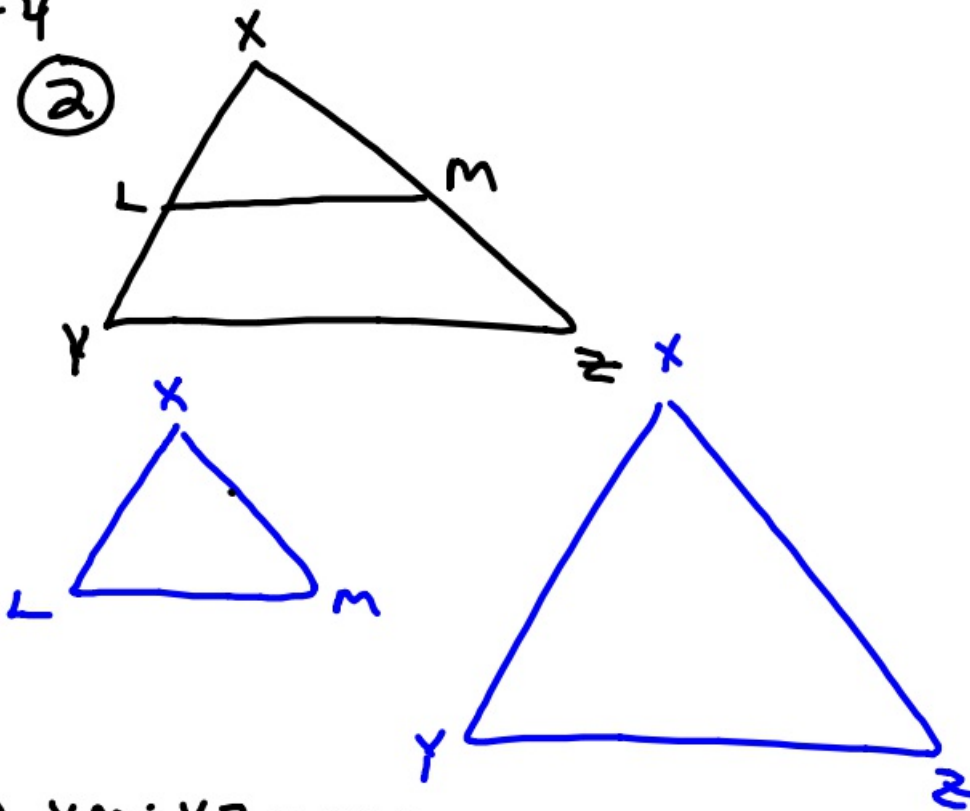
7-4

④



7-4

②

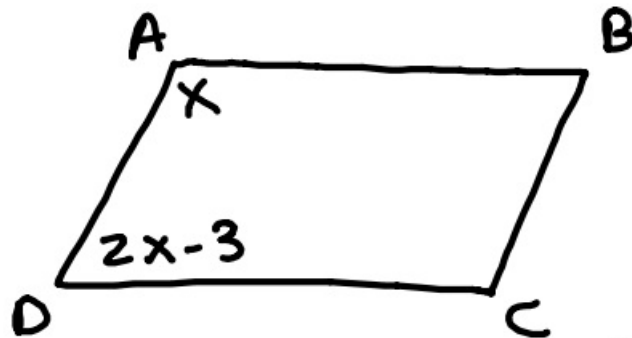


✓ (A)  $XM : XZ = XL : XY$

(B)  $XM : XZ = XY : XL$

## Chapter 6

(15)

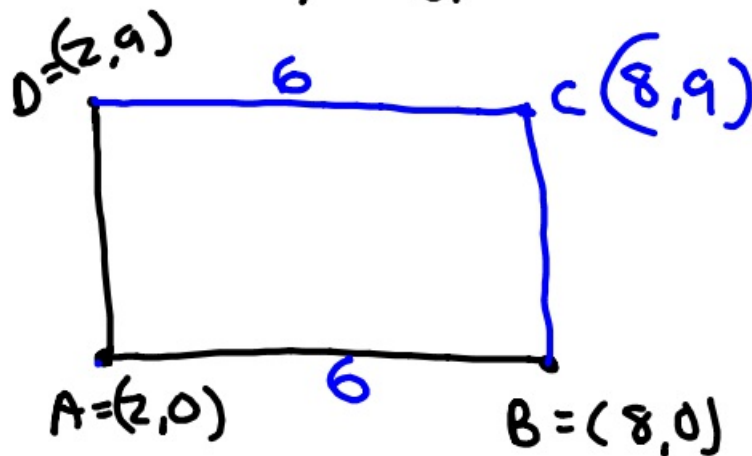


$$x + 2x - 3 = 180$$

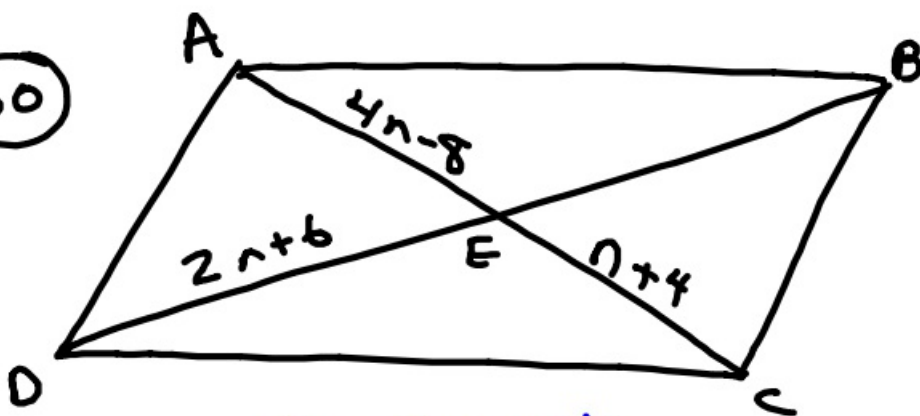
$$3x - 3 = 180$$

$$x = 61$$

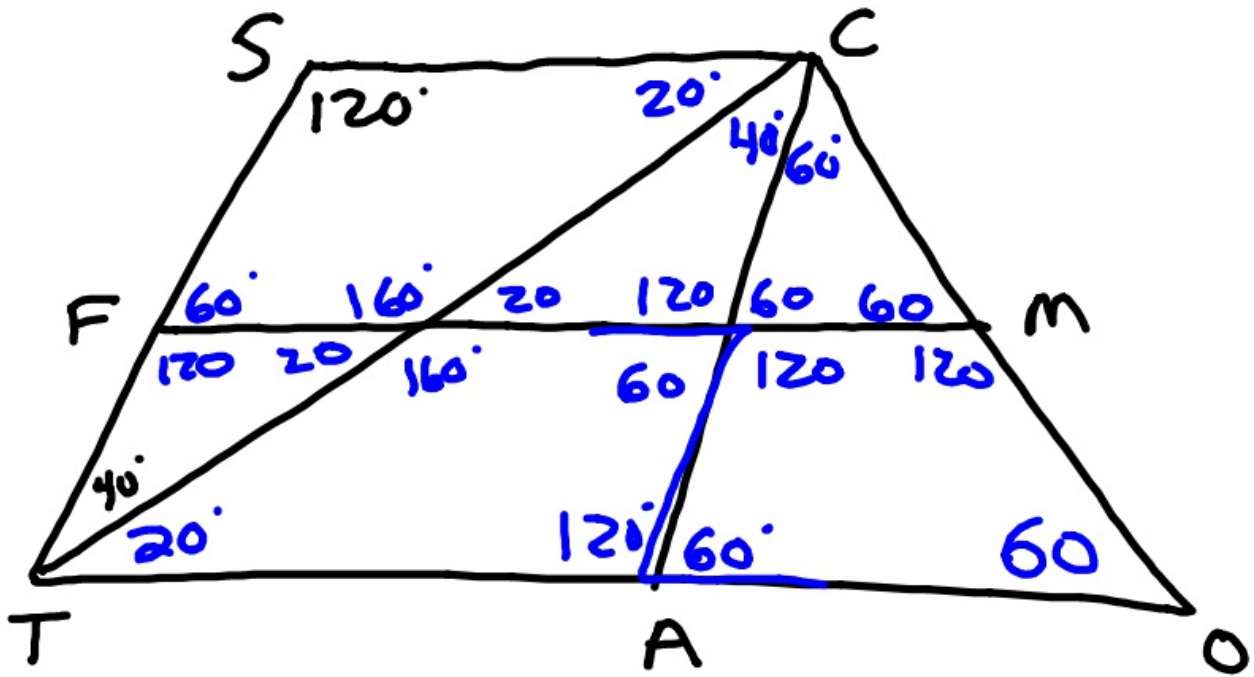
(24)



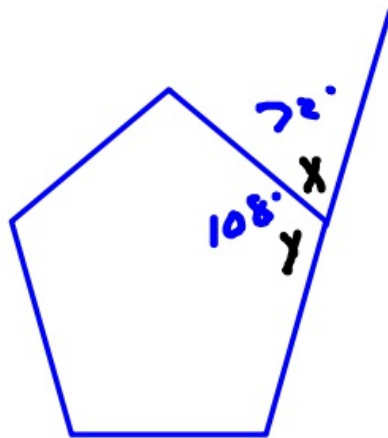
(30)



$$\begin{array}{r} 4n-8 = n+4 \\ -n \quad -n \\ \hline 3n-8 = 4 \\ n = 4 \end{array}$$

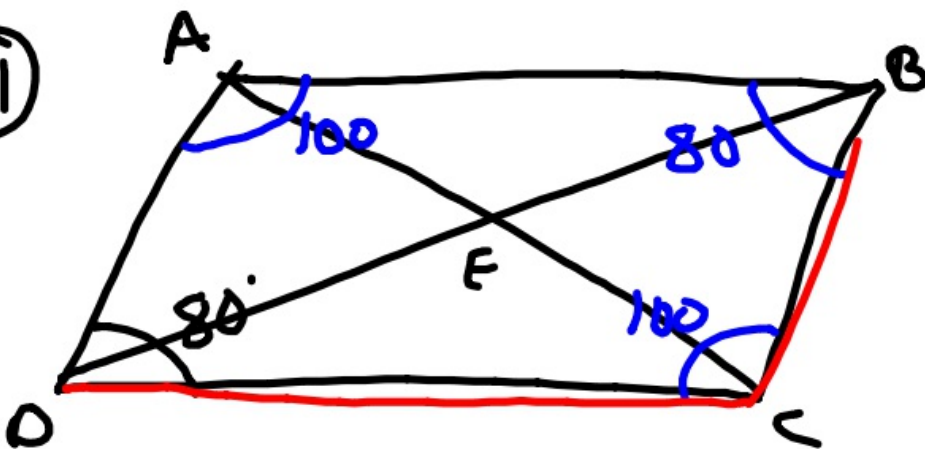


(47)



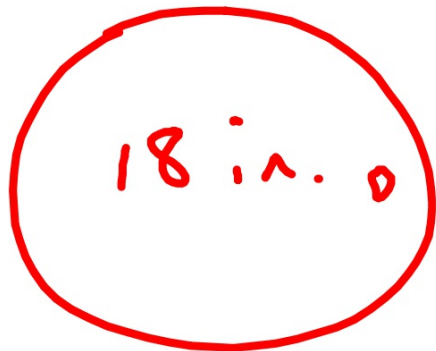
$$\begin{aligned} \text{ext } \angle &= \frac{360}{n} \\ &= \frac{360}{5} \\ &= 72 \end{aligned}$$

(31)



Twitter

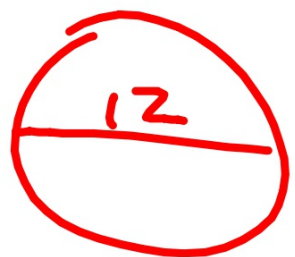
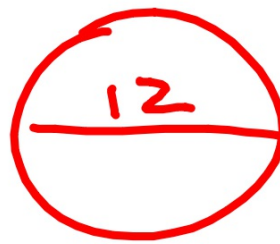
Pizza Math



$$\pi r^2$$

$$\pi \cdot 9^2$$

$$81\pi$$



$$\pi r^2$$

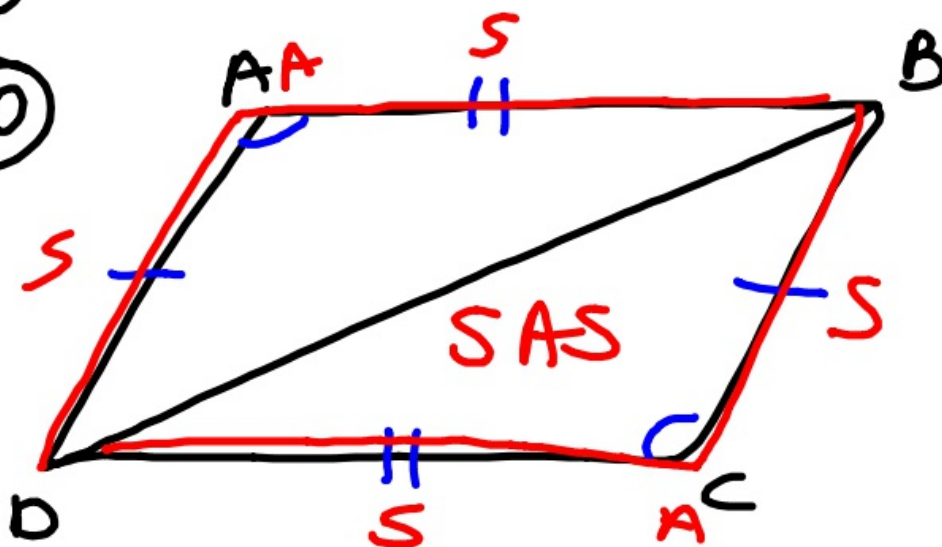
$$\pi \cdot 6^2$$

$$36\pi \cdot 2 = 72\pi$$

1-9-19 6<sup>th</sup> Geo

4-5

(10)



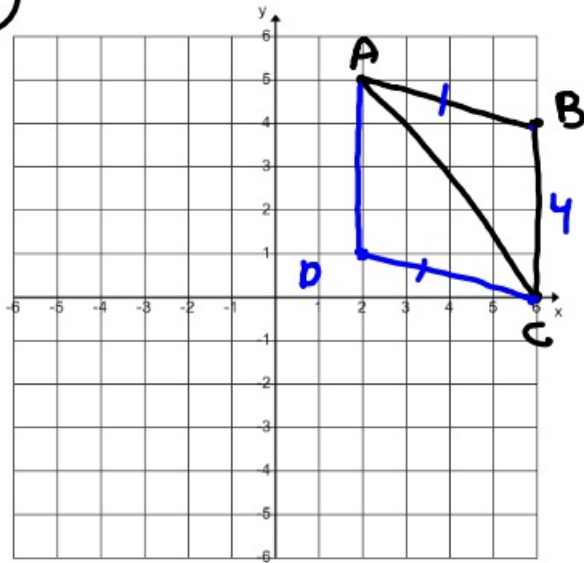
(12) Line has a slope of  $-2$

$$(A) m = \frac{\Delta y}{\Delta x} = \frac{1 - -1}{1 - 2} = \frac{2}{-1} = -2$$

$(1, 1)(2, -1)$

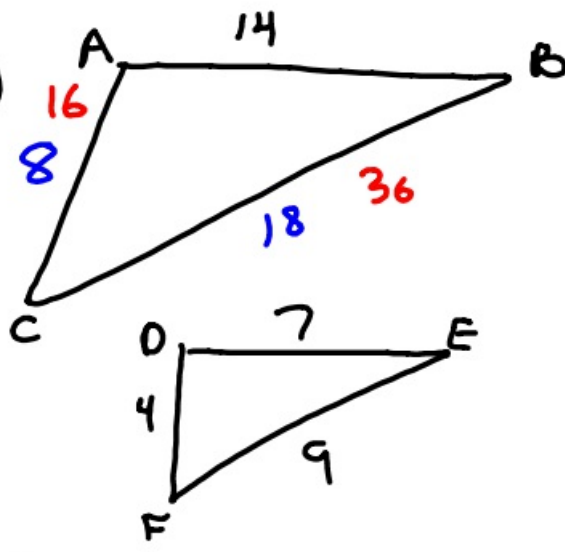
4-5

(4)



7-4

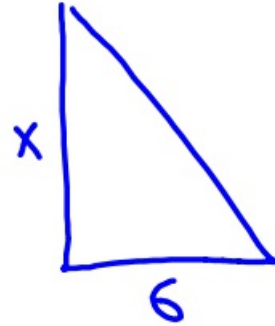
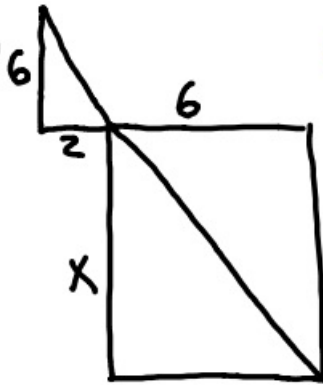
(11)



(B)  $\frac{BC}{AC} = \frac{4}{9}$

7-4

(12)



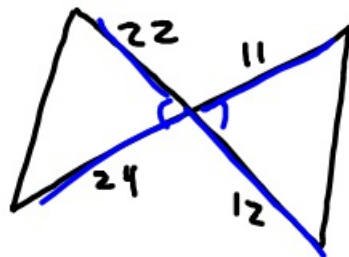
$$\frac{6}{x} = \frac{2}{6}$$

$$2x = 36$$

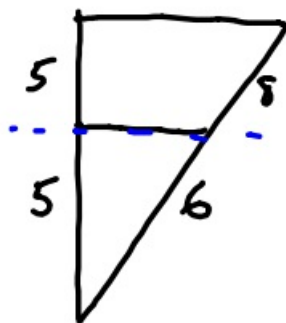
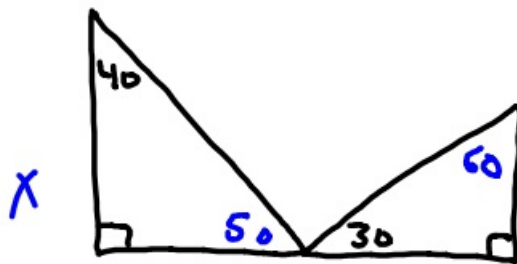
$$x = 18$$

7-4

(6)



$$\frac{11}{22} = \frac{12}{24}$$

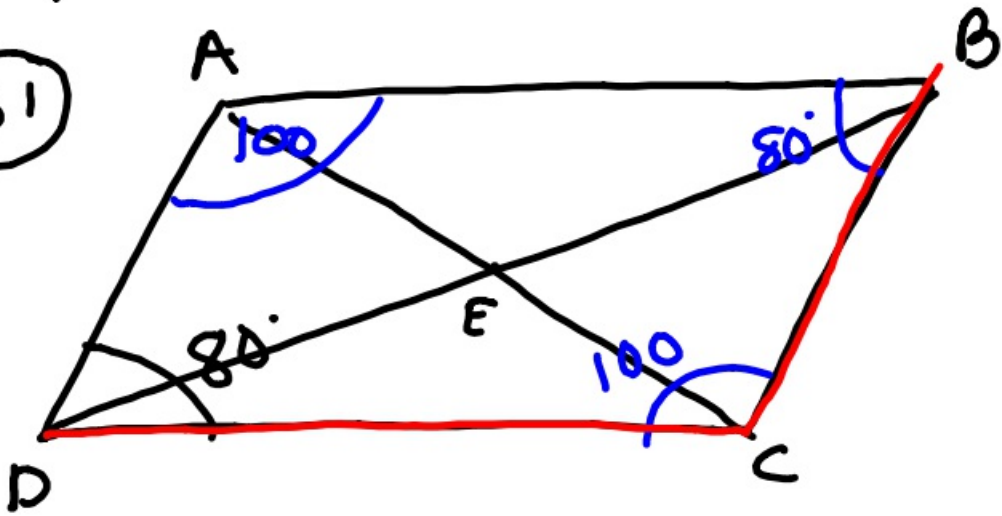


$$x \frac{5}{5} = \frac{8}{6}$$

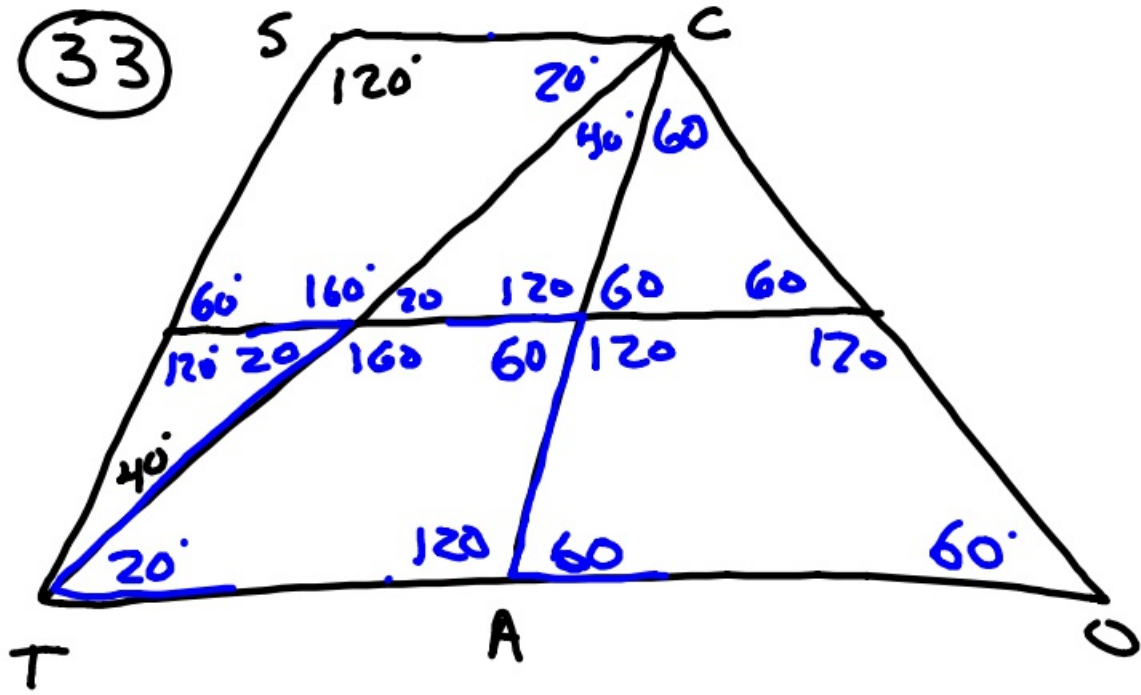


Chapter 6

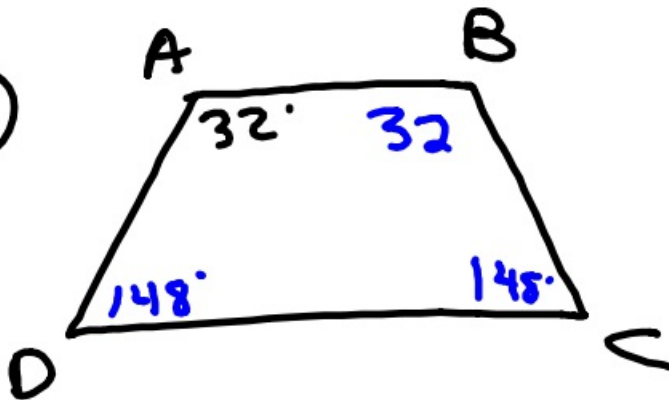
(31)



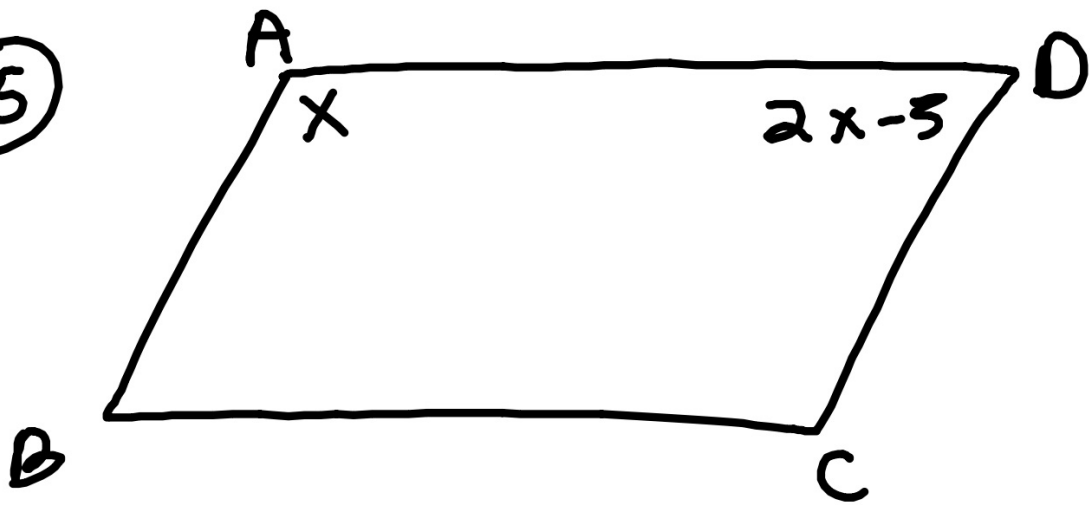
(33)



(26)



15



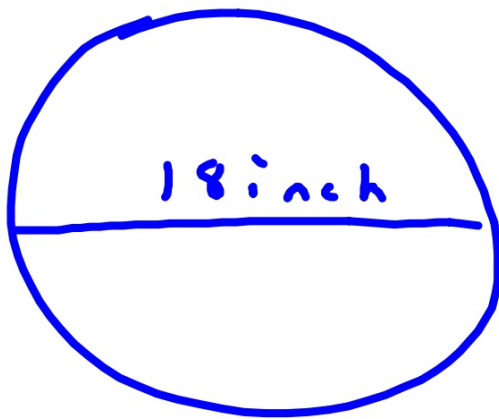
$$x + 2x - 3 = 180$$

$$\begin{array}{r} 3x - 3 = 180 \\ +3 \quad +3 \\ \hline \end{array}$$

$$3x = 183$$

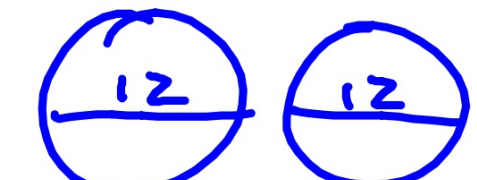
$$x = 61$$

# Pizza Math



$$\begin{aligned} &\pi r^2 \\ &\pi \cdot 9^2 \\ &81\pi \end{aligned}$$

vs.


$$\begin{aligned} &\pi r^2 \quad \pi r^2 \\ &\pi \cdot 6^2 + \pi 6^2 \\ &36\pi + 36\pi \\ &72\pi \end{aligned}$$