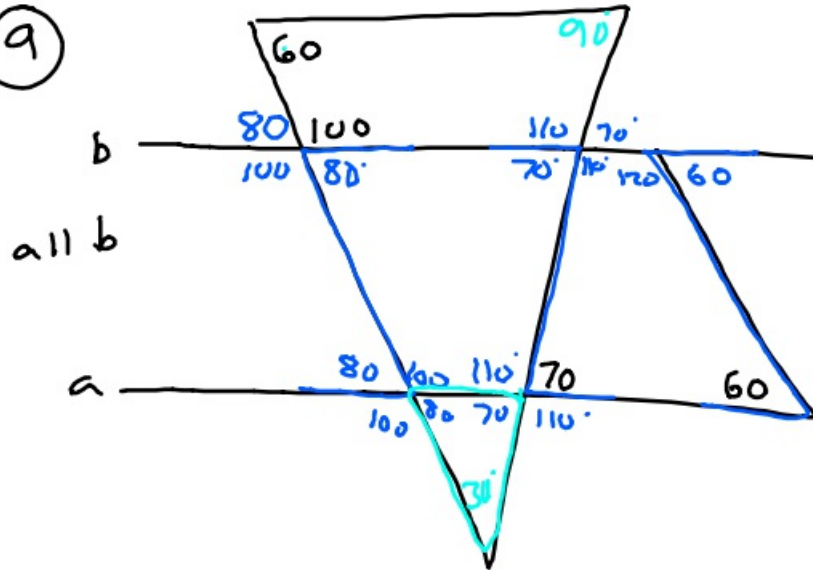


10-1-19 6th Geo

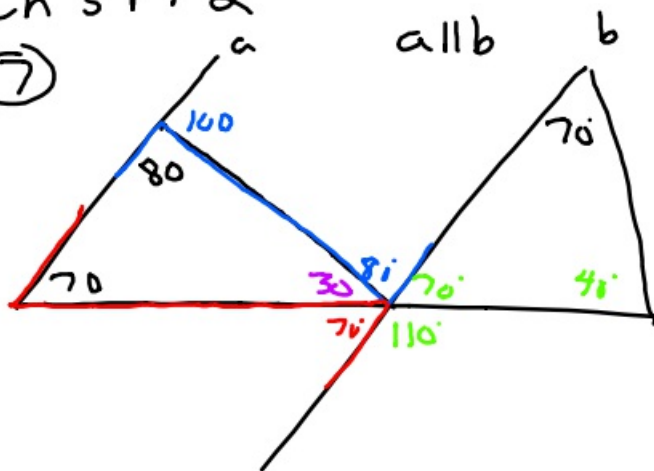
Ch. 3 PT 3

(9)



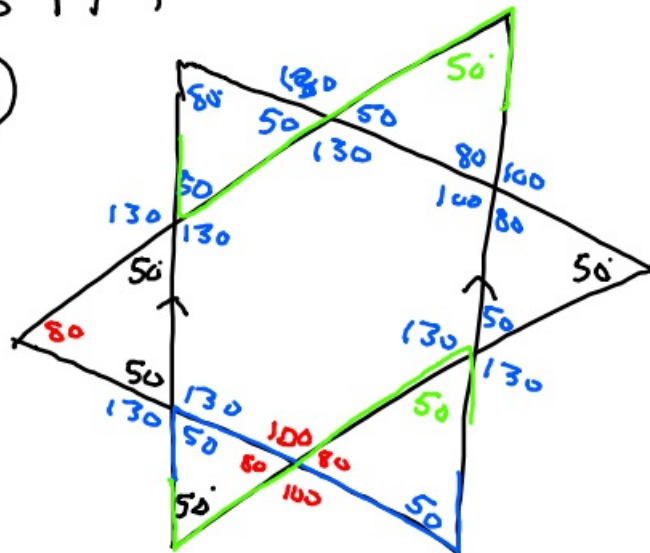
Ch 3 PT 2

(7)



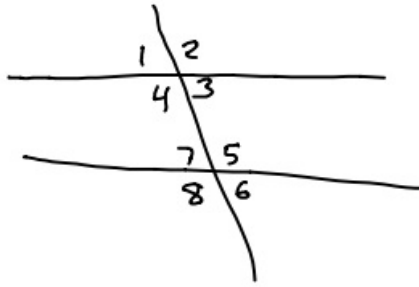
Ch 3 PT 1

(10)

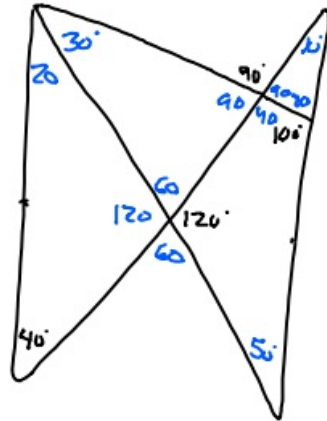


Ch 3 P 1 2

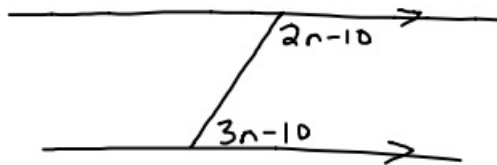
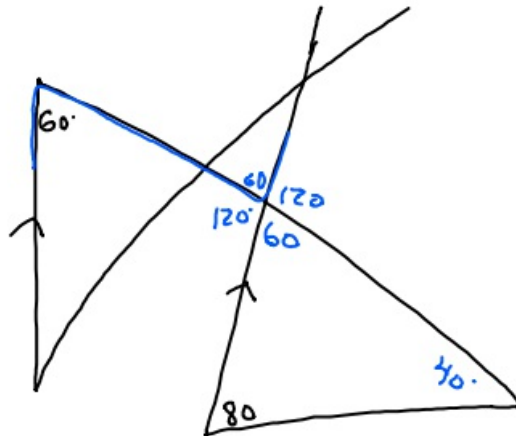
1-6



New



Not parallel



Find value of n .

$$2n-10 + 3n-10 = 180$$

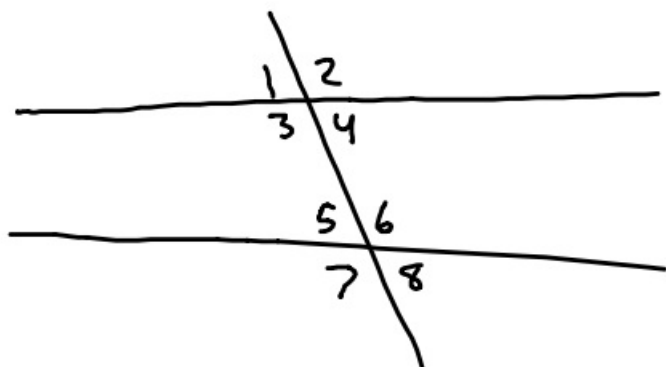
$$5n-20 = 180$$

$$+20 \quad +20$$

$$\hline 5n = 200$$

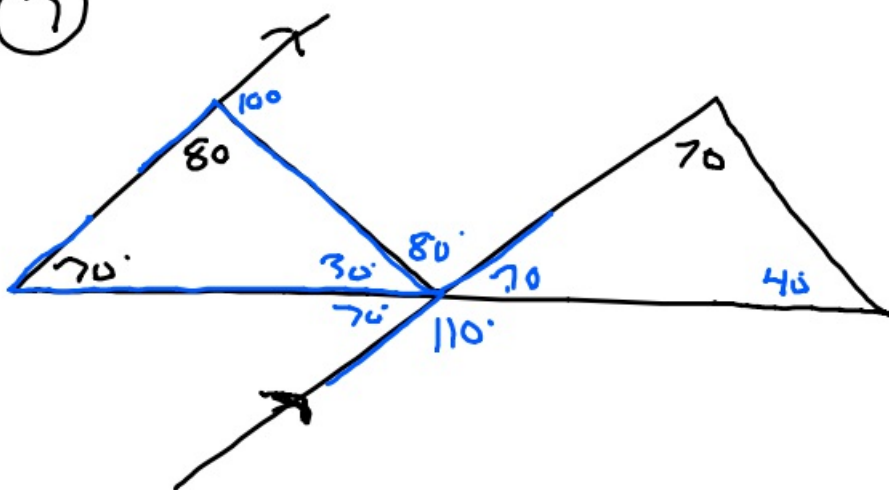
$$n = 40$$

10-1-19 7th Geo



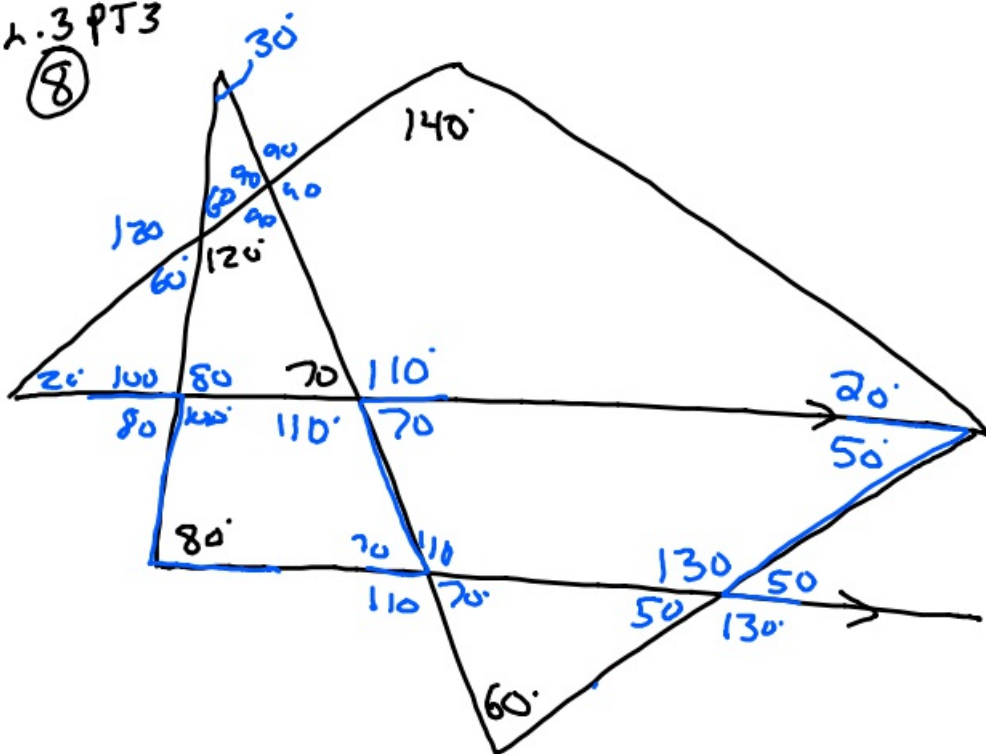
Ch. 3 PT 2

(7)

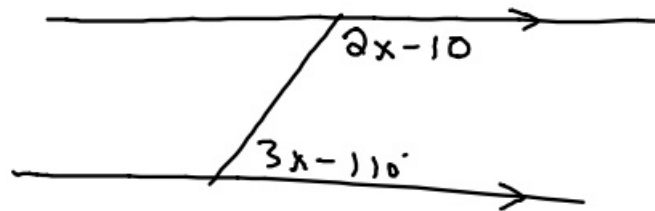
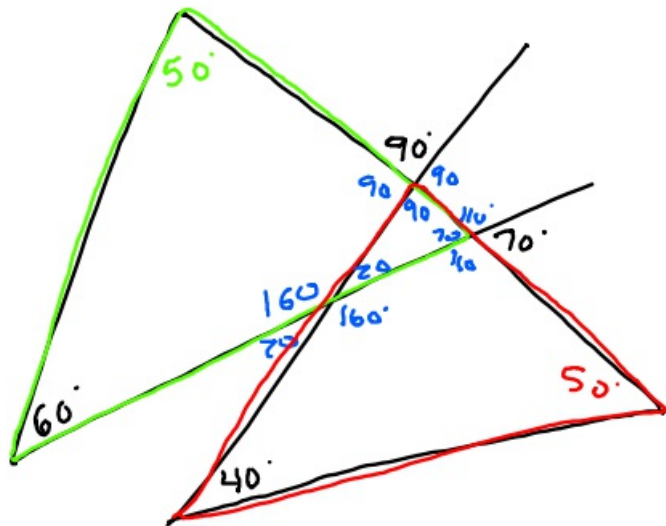
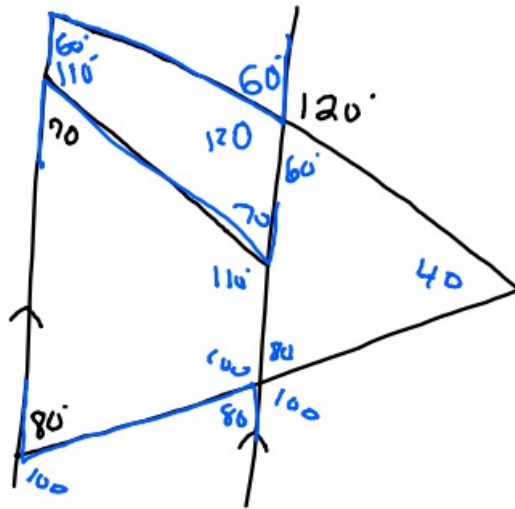


Ch. 3 PT 3

(8)



New



$$2x - 10 + 3x - 110 = 180$$

$$5x - 120 = 180$$

$$+120 \quad +120$$

$$\frac{5x}{5} = \frac{300}{5}$$

∴

$$x = 60$$