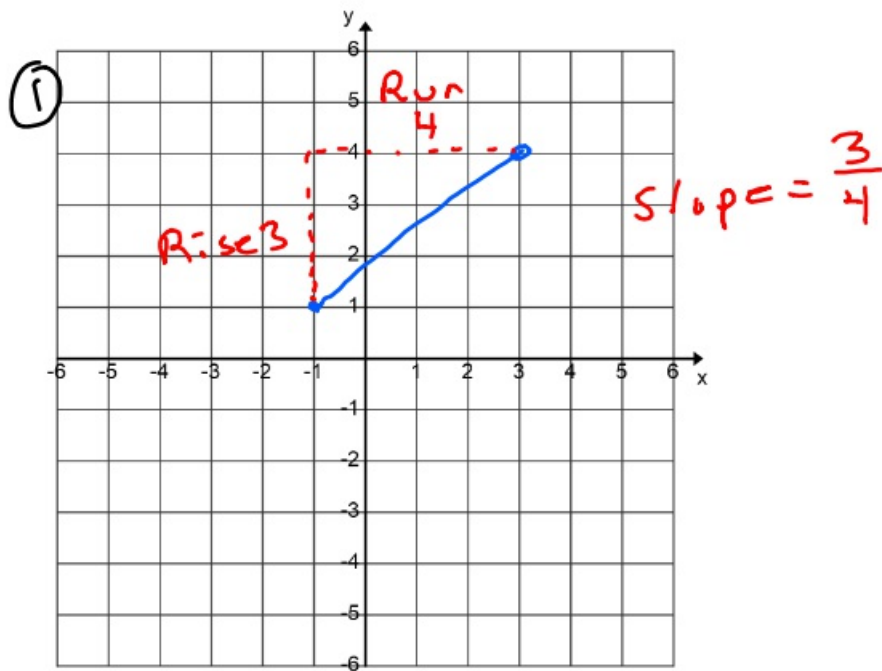


10-10-19 2<sup>nd</sup> Geo

FIRE

RISE with the WISE(y)  
and  
RUN to the EXIT(x)



② What is slope from  $(1, 6)$  to  $(4, 24)$ ?

$$\begin{aligned} \text{Slope} &= \frac{\Delta y}{\Delta x} = \frac{y_2 - y_1}{x_2 - x_1} = \frac{24 - 6}{4 - 1} \\ &= \frac{18}{3} \\ &= 6 \end{aligned}$$

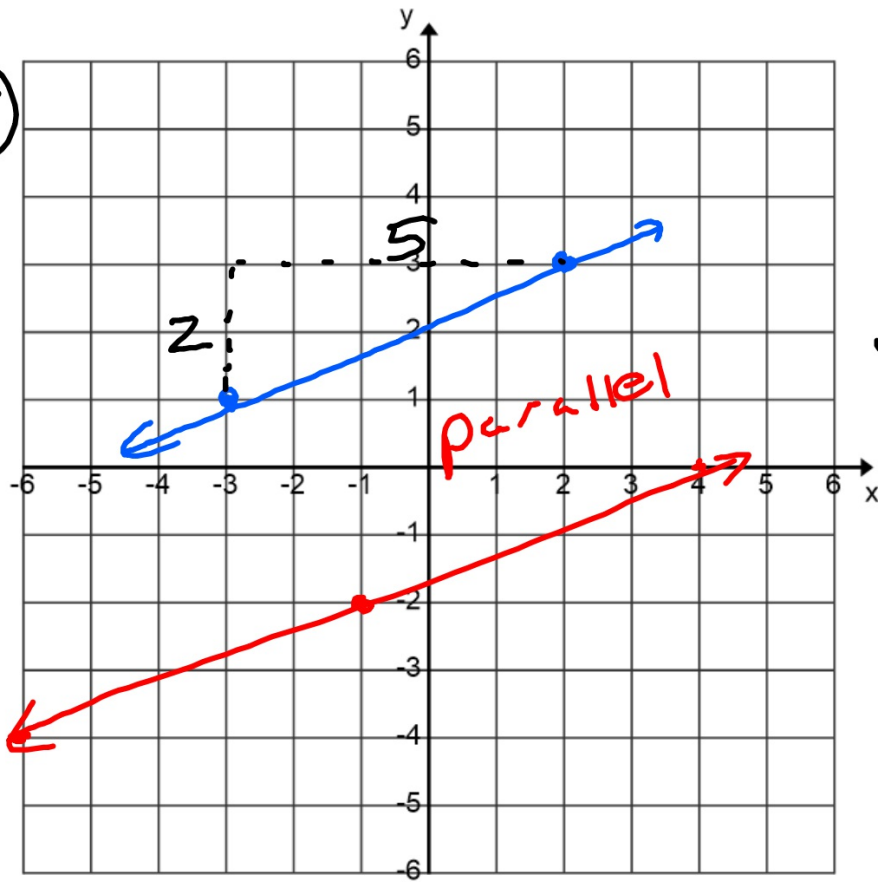
③ Give slope between  $(1, 4)$  and  $(3, 18)$ .

$$\text{slope} = \frac{\Delta y}{\Delta x} = \frac{18 - 4}{3 - 1} = \frac{14}{2} = 7$$

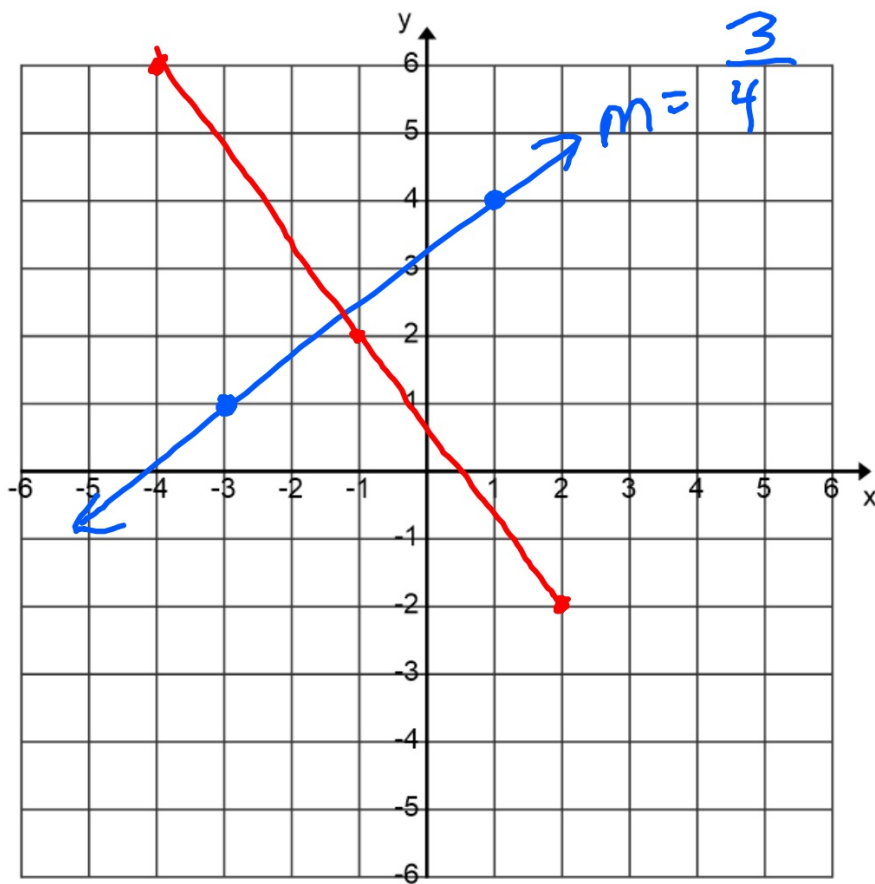
④ Slope between  $(-1, -3)$  and  $(-4, -5)$ ?

$$\text{slope} = \frac{\Delta y}{\Delta x} = \frac{-3 + 5}{-1 + 4} = \frac{2}{3}$$

5

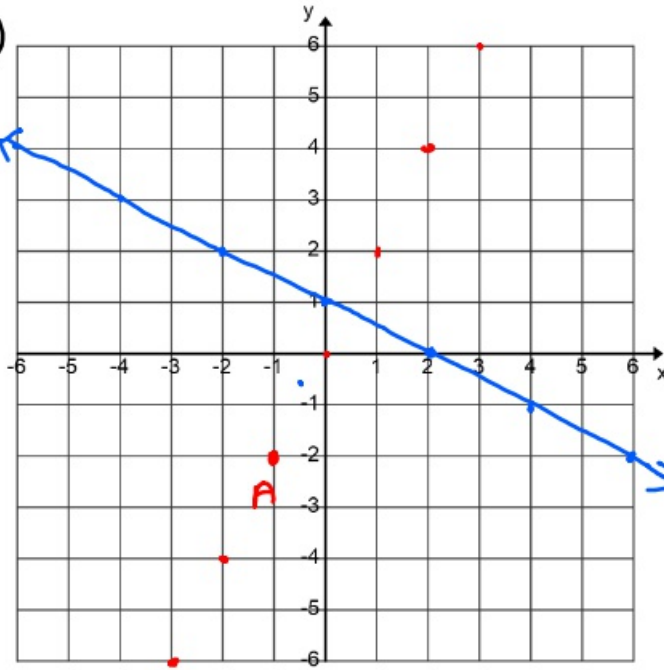


$$\text{slope} = \frac{2}{5}$$



$$\therefore m = -\frac{4}{3}$$

7

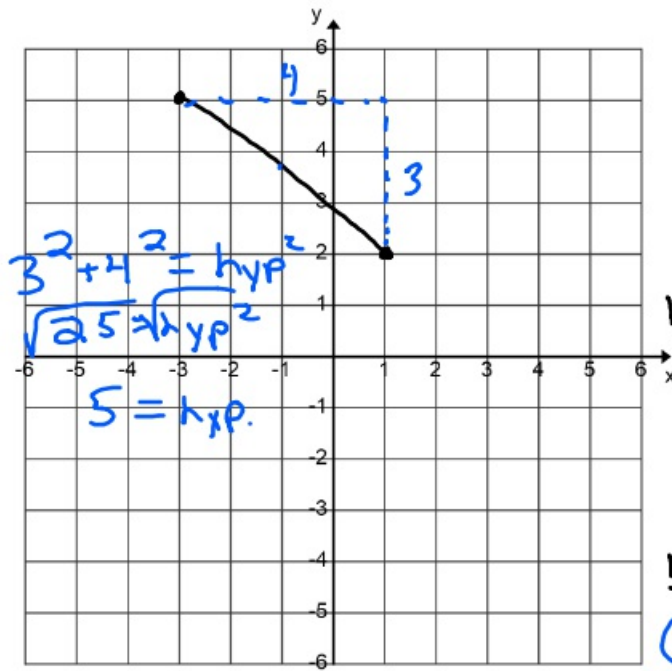


$m = -\frac{1}{2}$

$\perp m = 2$

Give parallel and  $\perp$  slope

	Slope	parallel	perpendicular
8	$\frac{2}{3}$	$\frac{2}{3}$	$-\frac{3}{2}$
9	$-\frac{1}{4}$	$-\frac{1}{4}$	4
10	-3	-3	$\frac{1}{3}$
11	$\frac{5}{7}$	$\frac{5}{7}$	$-\frac{7}{5}$
12	-8	-8	$\frac{1}{8}$



$$\text{slope} = -\frac{3}{4}$$

length of line =

5

midpoint of line

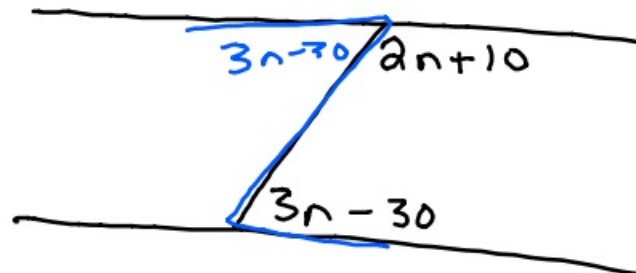
$(1, 2)$

$(-3, 5)$

$$\left( \frac{1+(-3)}{2}, \frac{2+5}{2} \right)$$

$(-1, 3\frac{1}{2})$

(14)



What is  $n$  that make lines parallel?

$$3n - 30 + 2n + 10 = 180$$

$$5n - 20 = 180$$

$$+20 + 20$$

$$\frac{5n}{5} = \frac{200}{5}$$

$$n = 40$$

15

