

10-15-18
5th Geo

① $AB = ?$

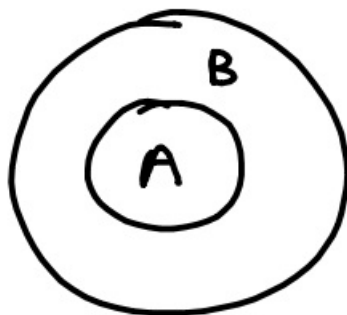
② Slope of $\overline{CB} = ?$

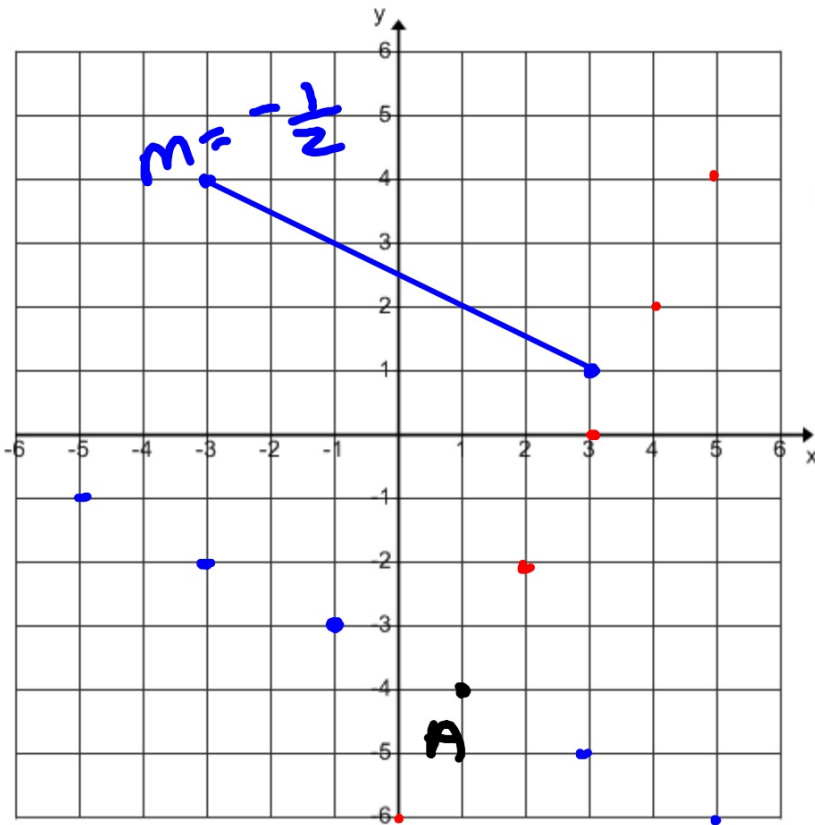
① $\sqrt{3^2 + 3^2}$ $(0, 4) (3, 1)$
 $\sqrt{18}$

- Ⓐ $9\sqrt{2}$ Ⓑ $3\sqrt{2}$ Ⓒ $4\sqrt{2}$

② $\frac{\text{rise}}{\text{run}}$

③ Give an example of this Venn diagram:

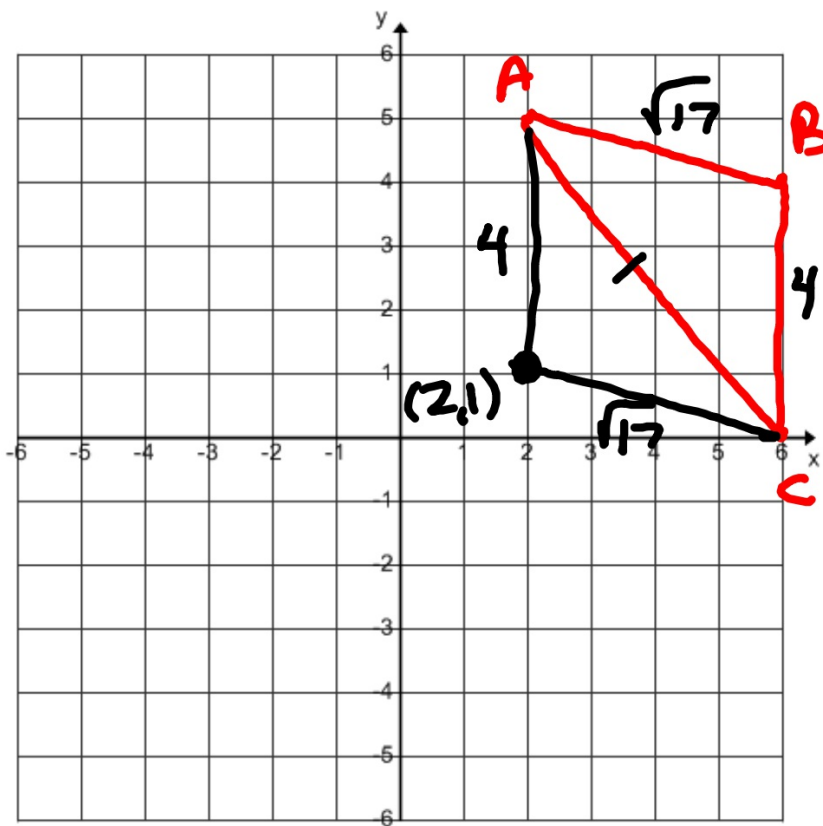




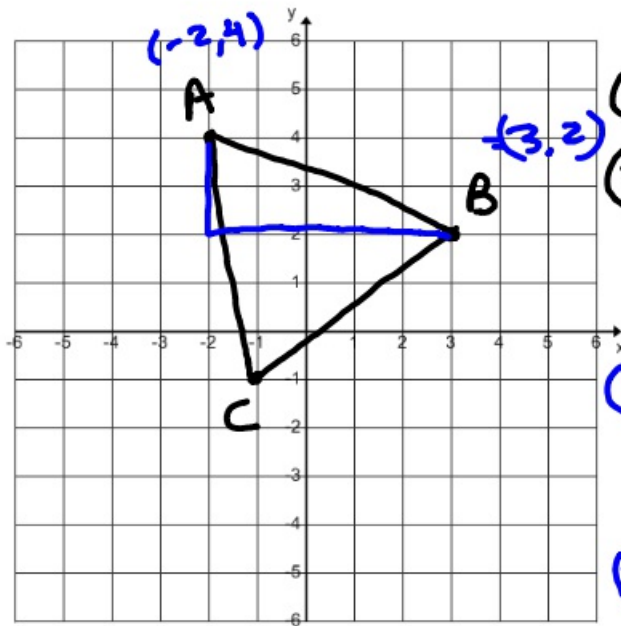
Give another point that with A forms

a.) parallel line

b.) \perp line



IF $\triangle CDA$ is
 Congruent to
 $\triangle ABC$, what
 are the
 coordinates
 of D?



① $AB = ?$

② Slope of $\overline{CA} = ?$

① $\frac{\sqrt{5^2 + 2^2}}{\sqrt{29}}$

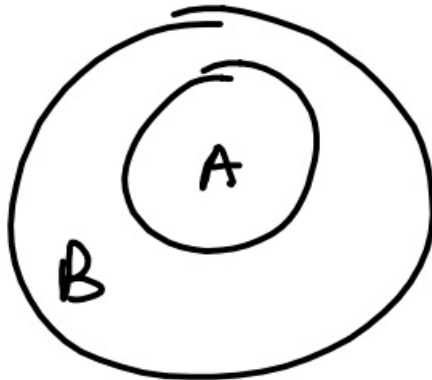
② $\frac{5}{1} = -5$

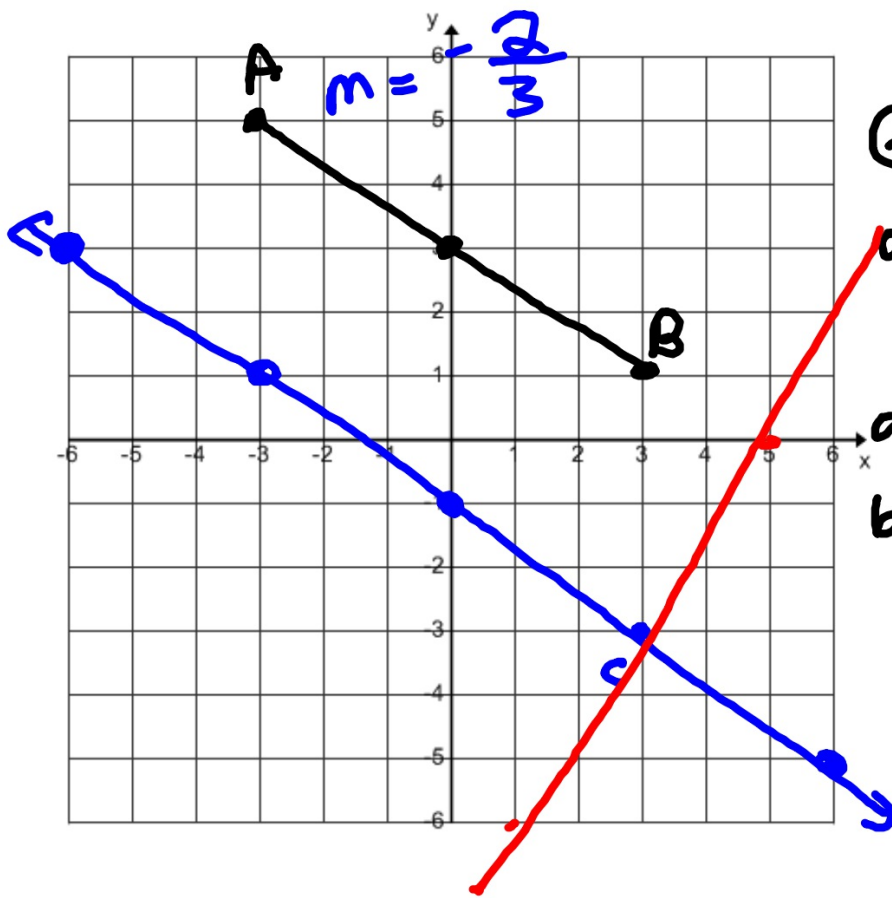
If Answer ① had been

$\sqrt{18}$, which is the same?

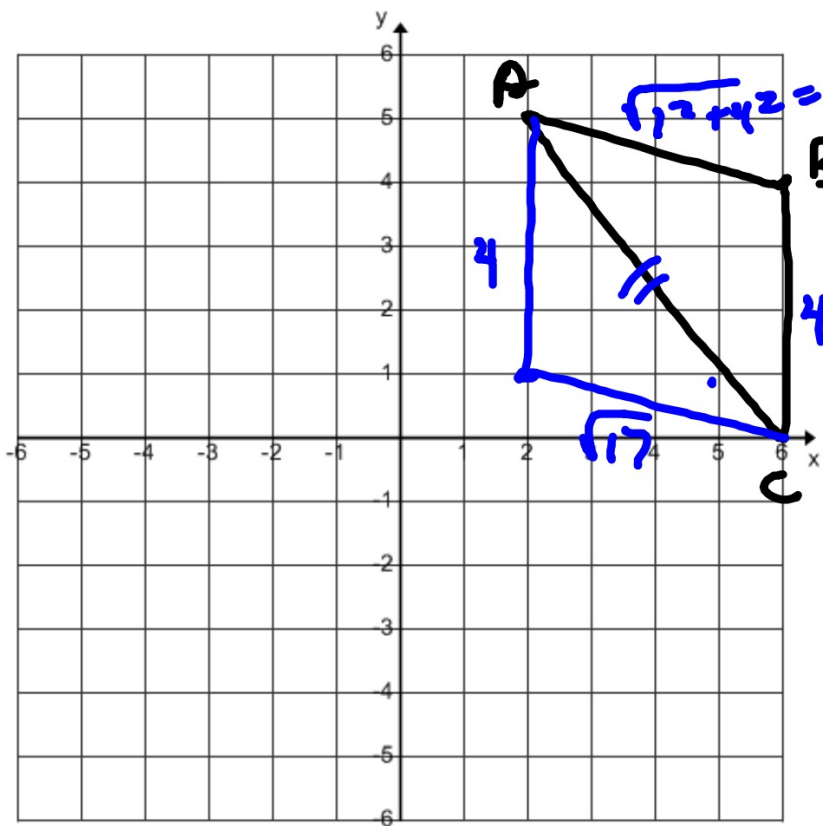
- Ⓐ $2\sqrt{2}$ Ⓑ $3\sqrt{2}$ Ⓒ $4\sqrt{2}$

Give me a real life example of what A + B could be if I had





Give a point
 on \overline{CD} that
 is
 a.) parallel to \overline{AB}
 b.) \perp to \overline{AB}



$$\triangle CDA \cong \triangle ABC$$

What are
the
coordinates
of D?

(2, 1)