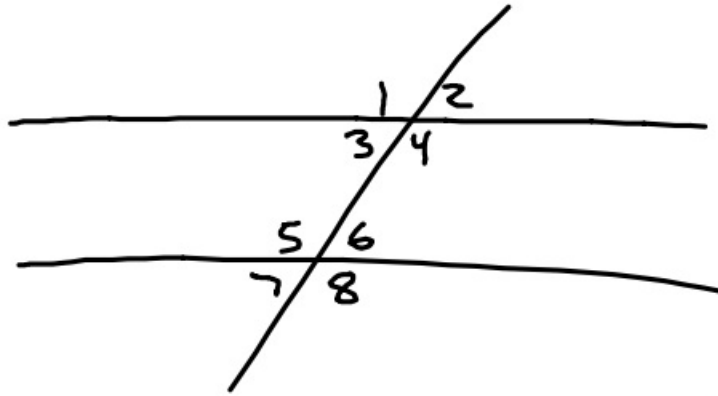


10-6-17 5th Geo

Ch. 3 Review

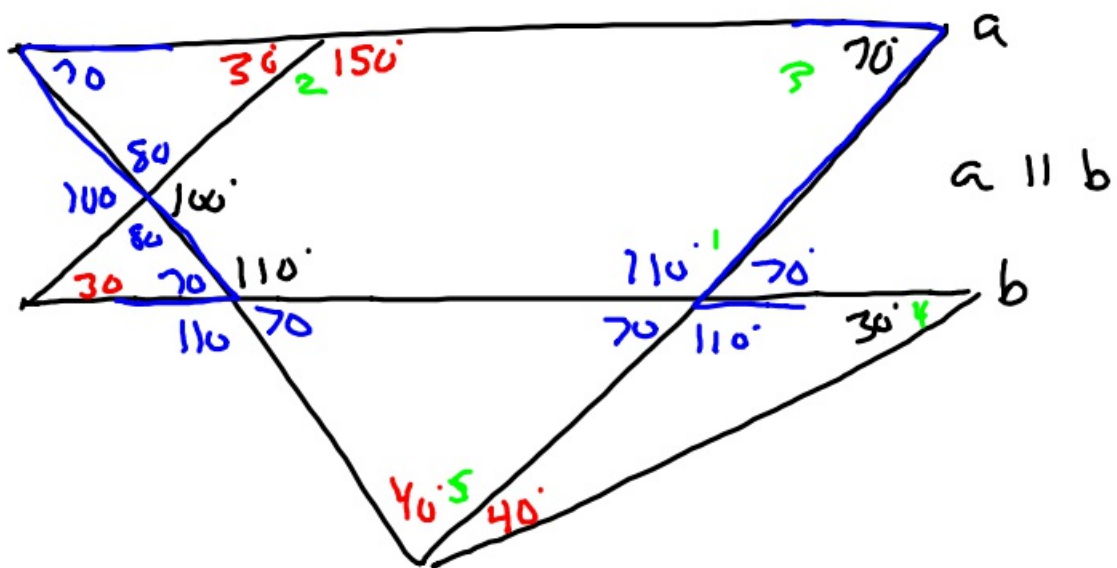


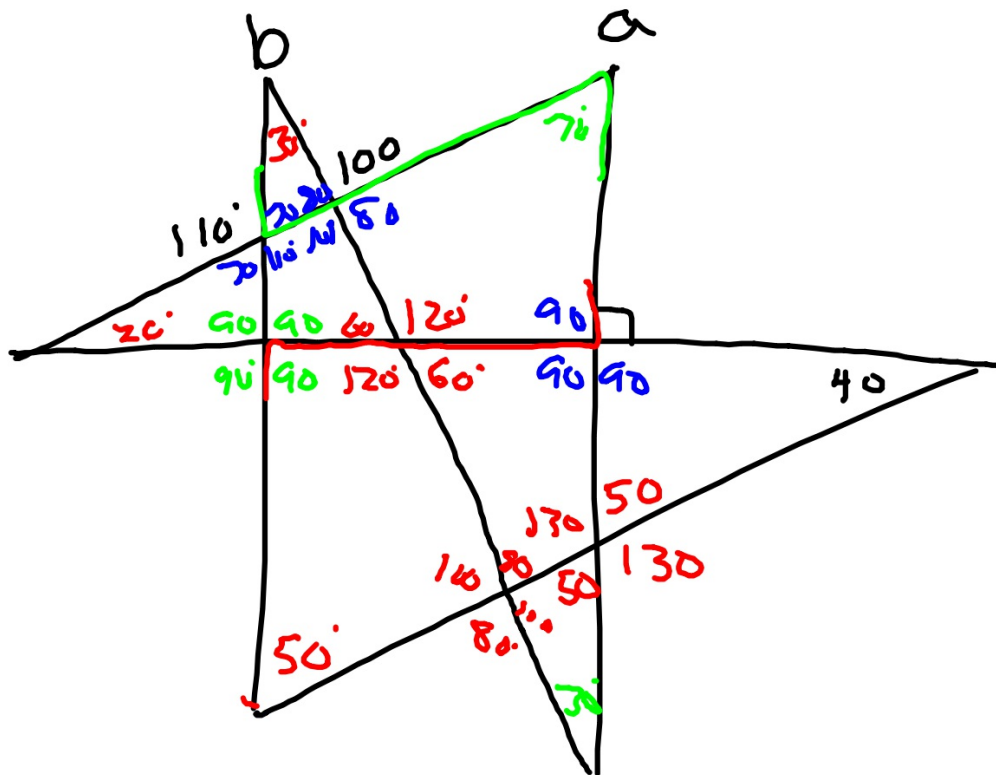
3 & 7 → Corresponding \angle 's

1 & 8 → Alternate exterior \angle 's

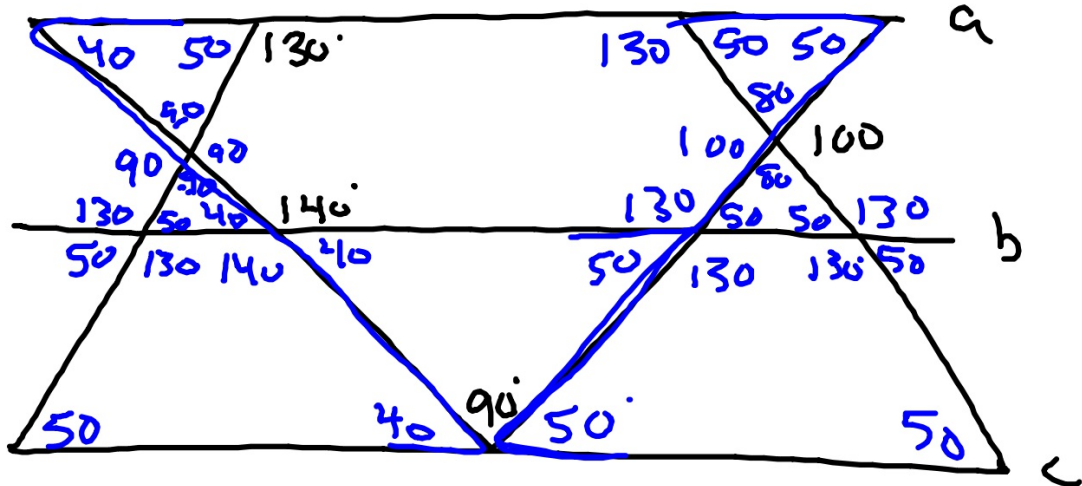
4 & 6 → Consecutive Interiors

4 & 5 → Alternate Interior

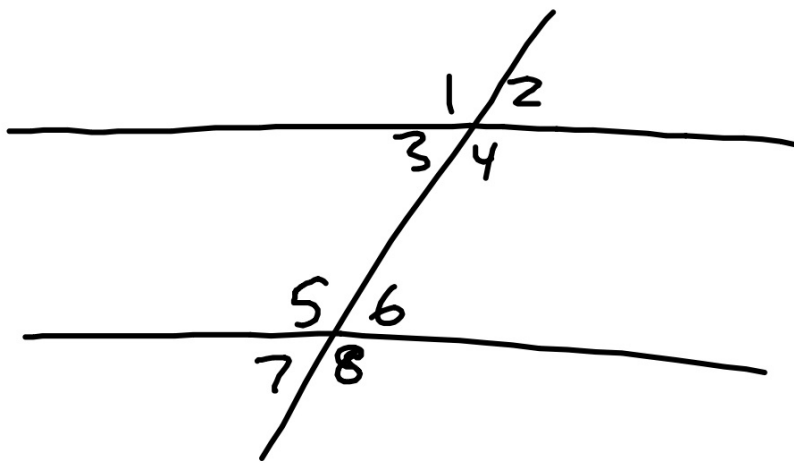




a || b || c



10-6-17 6th Geo

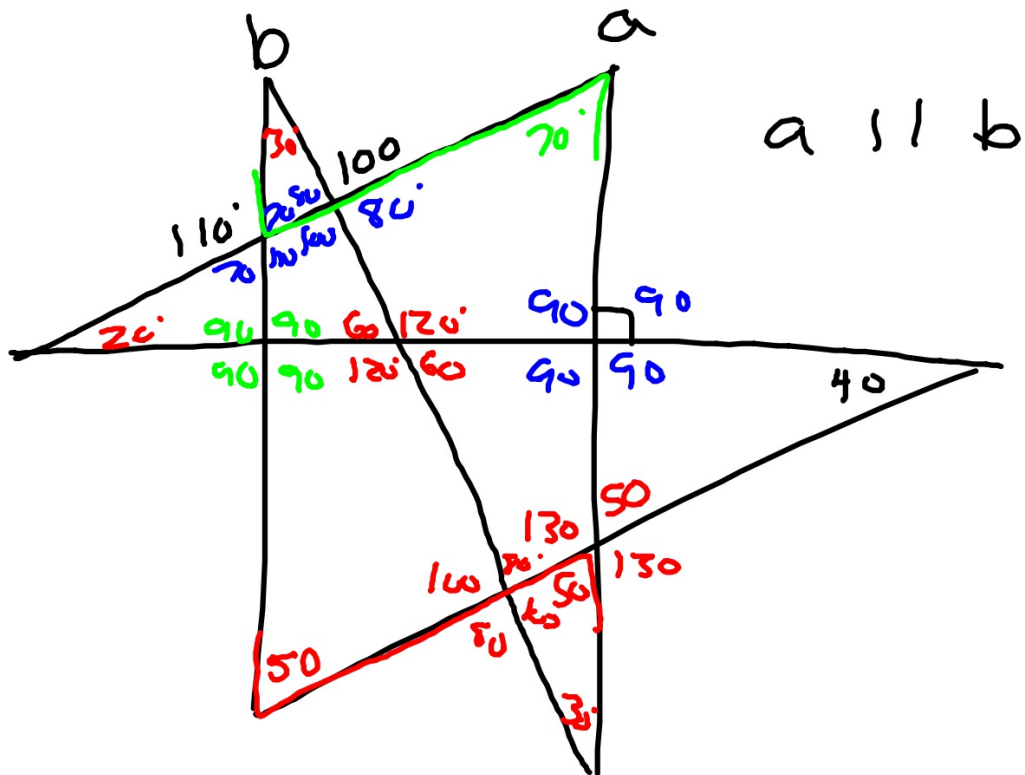


3 & 6 → Alternate interior \angle 's

2 & 6 → Corresponding \angle 's

3 & 5 → Consecutive Interior \angle 's

1 & 8 → Alternate Exterior \angle 's



$a \parallel b \parallel c$

