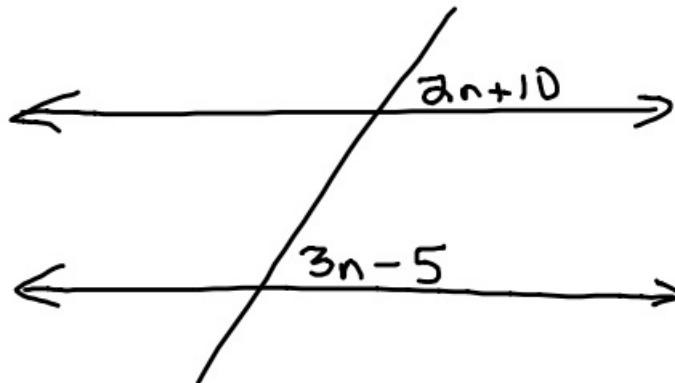


10-7-19 2<sup>nd</sup> Geo

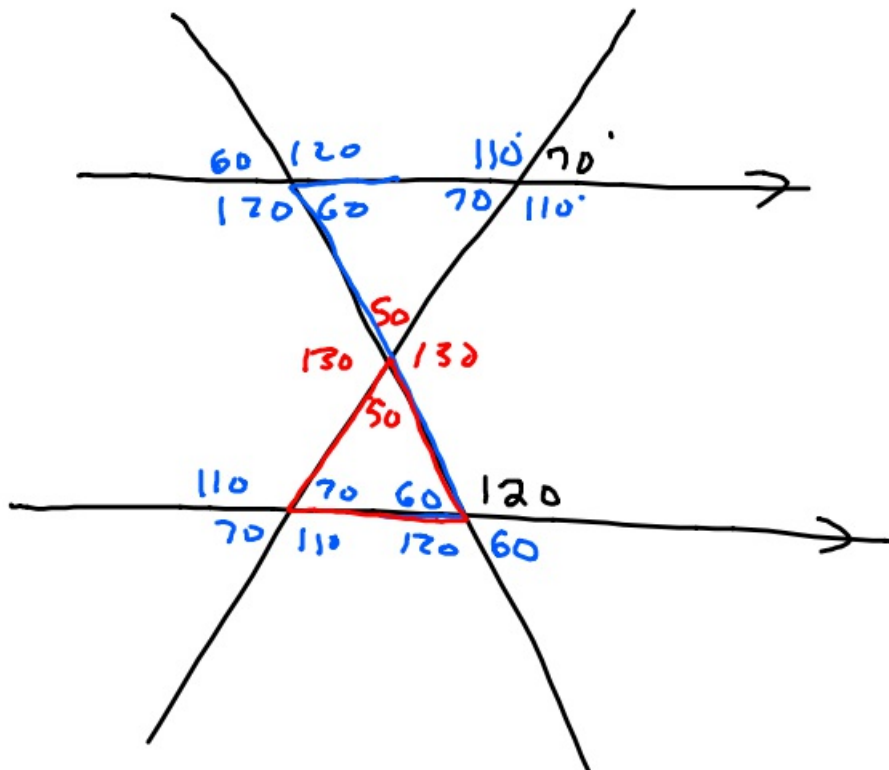
①



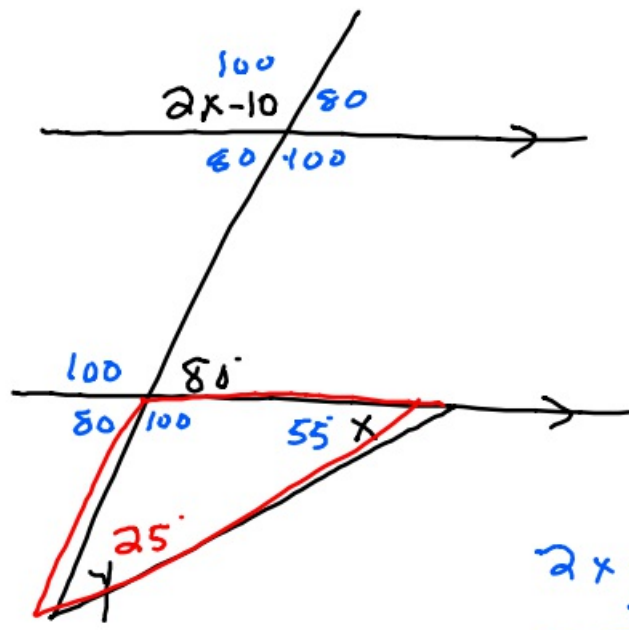
What must  $n$  be to make the lines parallel?

$$\begin{array}{r} 2n+10=3n-5 \\ -2n \quad -2n \\ \hline 10=n-5 \\ +5 \quad +5 \\ \hline 15=n \end{array}$$

②

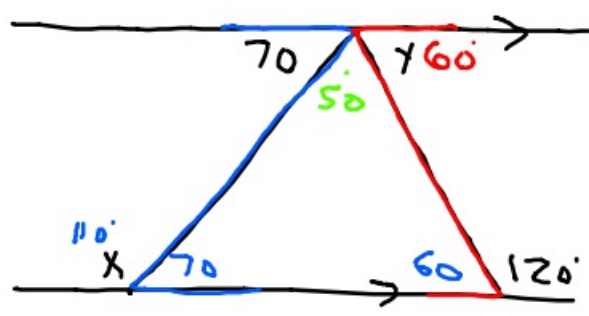


③

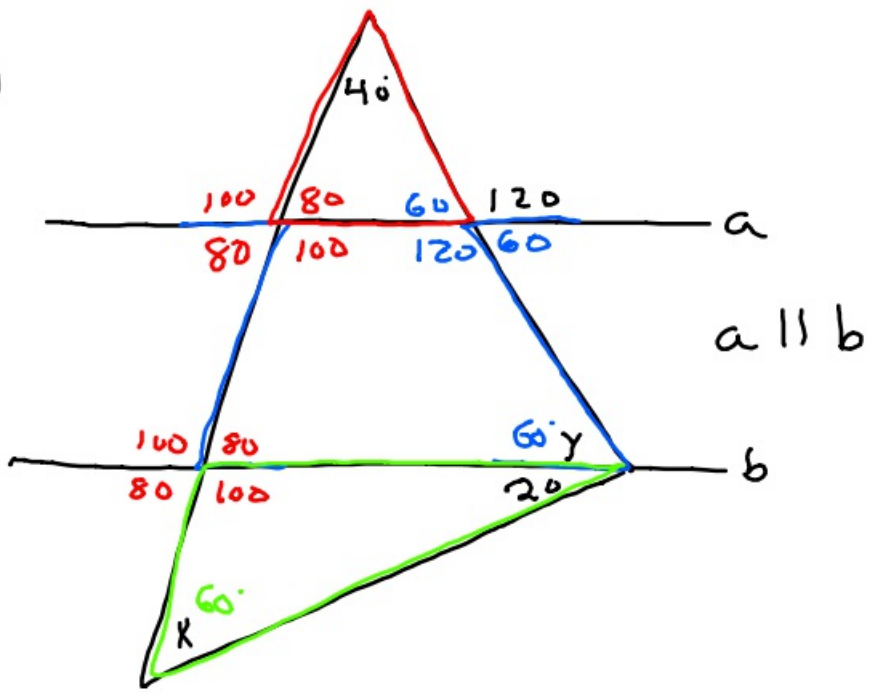


$$\begin{aligned}
 2x - 10 &= 100 \\
 +10 &+10 \\
 \hline
 2x &= 110 \\
 \frac{2x}{2} &= \frac{110}{2} \\
 x &= 55
 \end{aligned}$$

④



⑤



⑥

