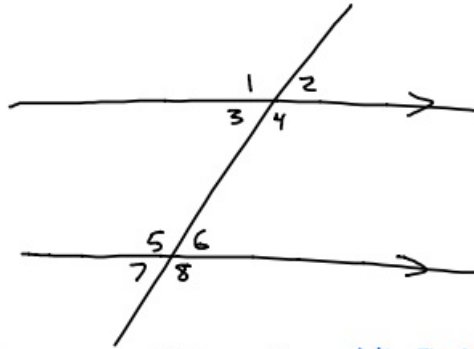


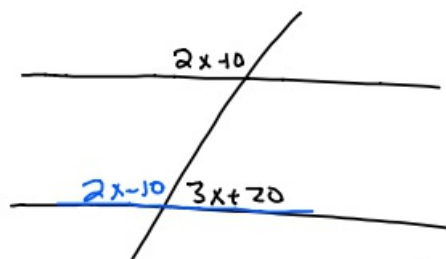
10-8-19 2<sup>nd</sup> Geo

①



$\angle 1$  equals which angles  $\angle 4, 5, 8$   
 $\angle 2$  equals which angles  $\angle 3, 6, 7$

②



What value of  $x$  makes the lines parallel?

$$2x-10 + 3x+20 = 180$$

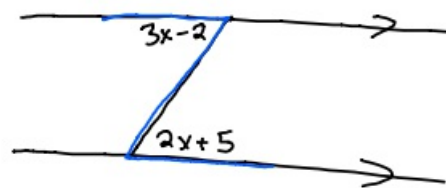
$$5x + 10 = 180$$

$$\begin{array}{r} 5x + 10 = 180 \\ -10 \quad -10 \\ \hline 5x = 170 \end{array}$$

$$\frac{5x}{5} = \frac{170}{5}$$

$$x = 34$$

③



What is  $x$ ?

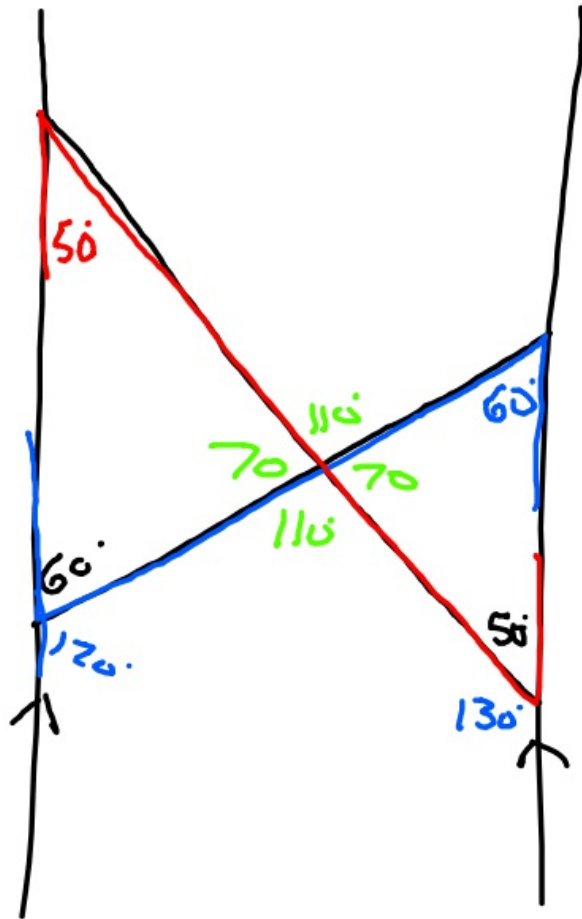
$$3x-2 = 2x+5$$

$$\begin{array}{r} 3x-2 = 2x+5 \\ -2x \quad -2x \\ \hline x-2 = 5 \end{array}$$

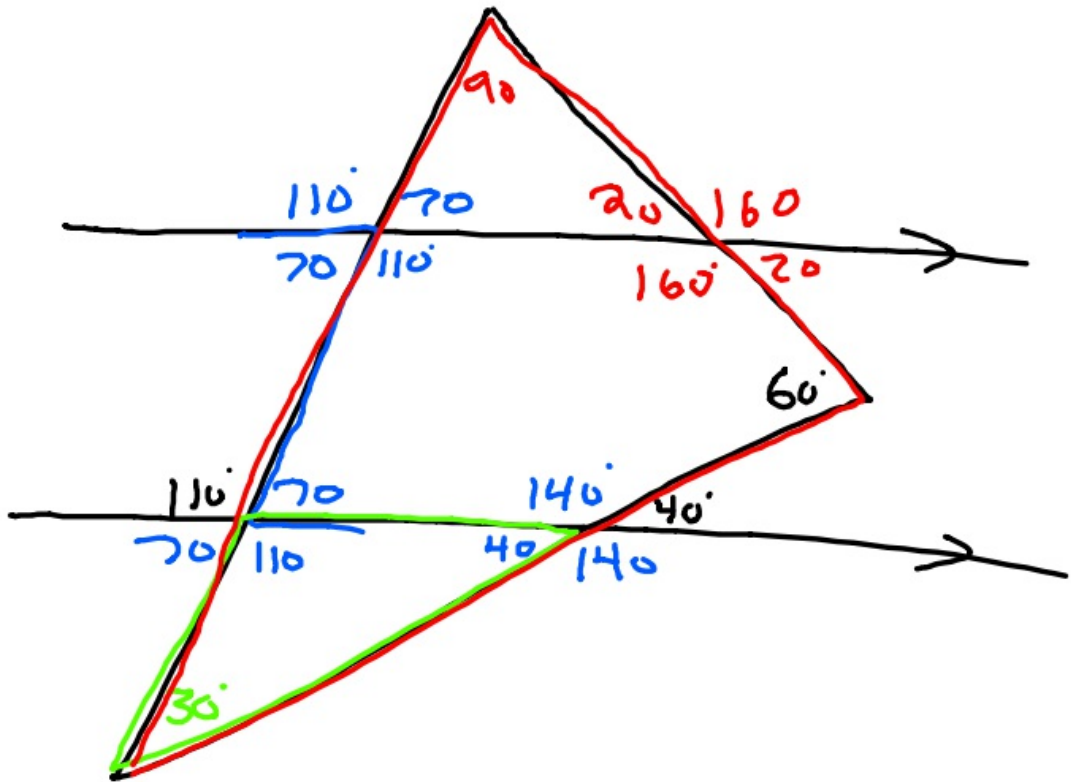
$$\begin{array}{r} x-2 = 5 \\ +2 \quad +2 \\ \hline x = 7 \end{array}$$

$$x = 7$$

4

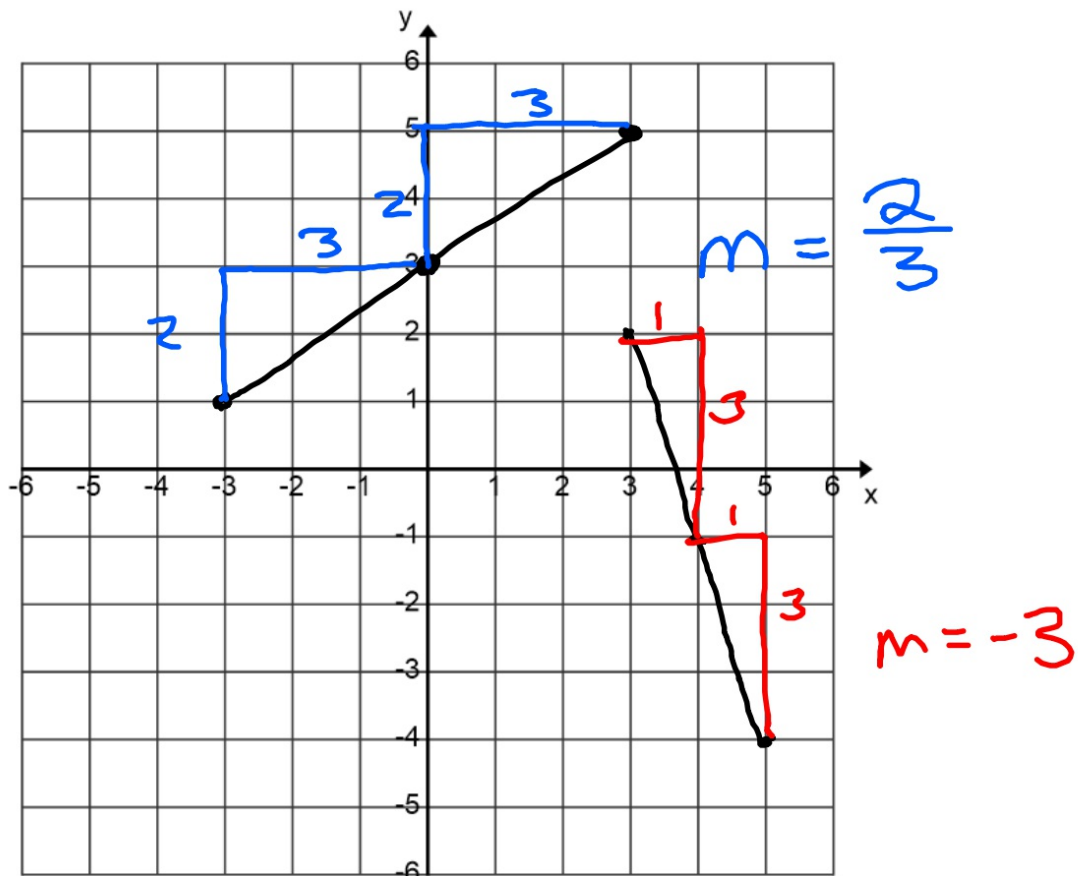


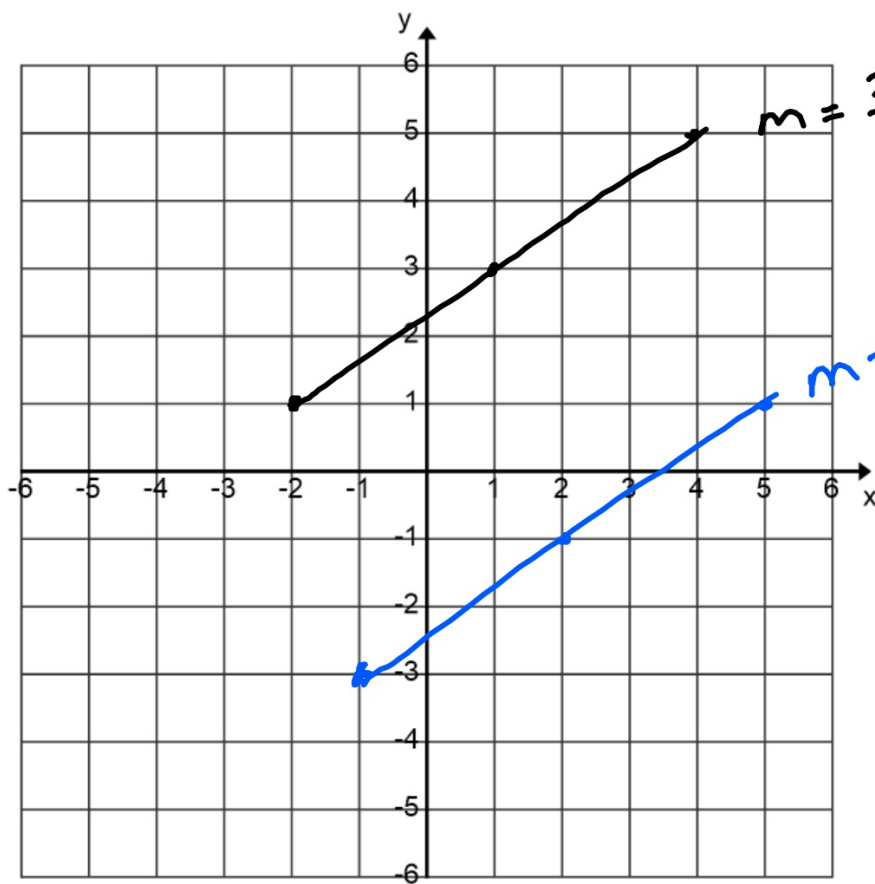
5



# New Thought

## Slope

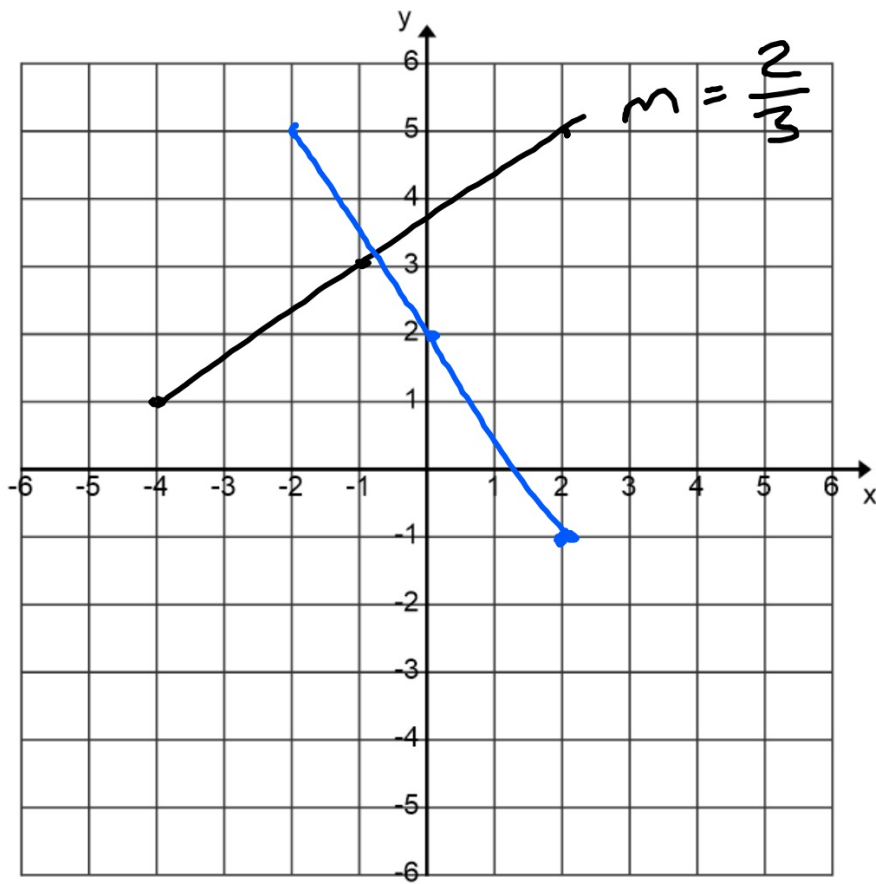




$$m = \frac{2}{3}$$

parallel

$$m = \frac{2}{3}$$



$$m = \frac{2}{3}$$

$$\perp m = -\frac{3}{2}$$