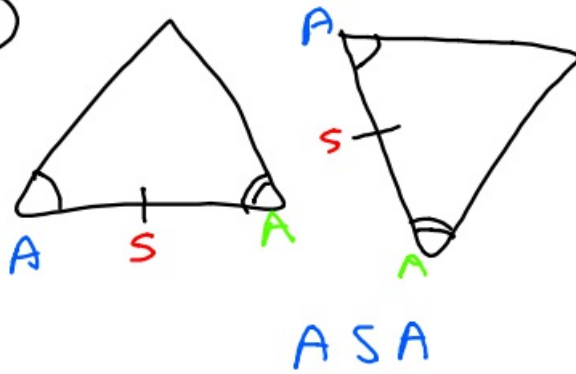
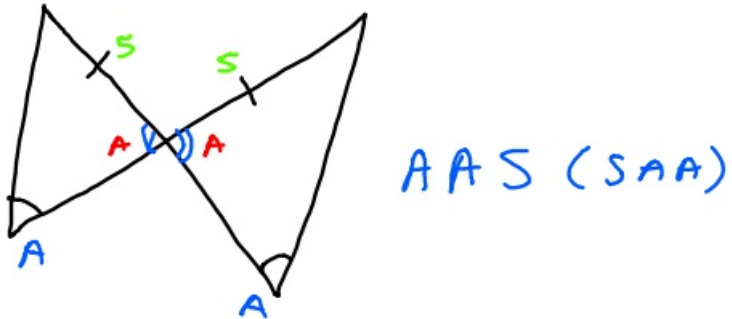


11-11-19 2nd Geo

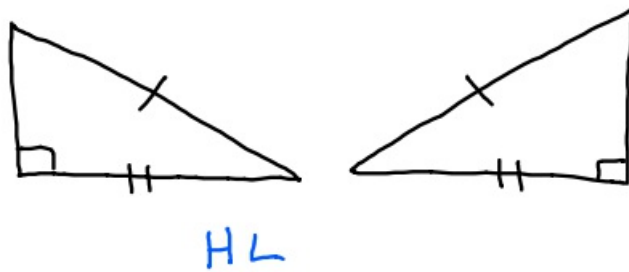
①



②

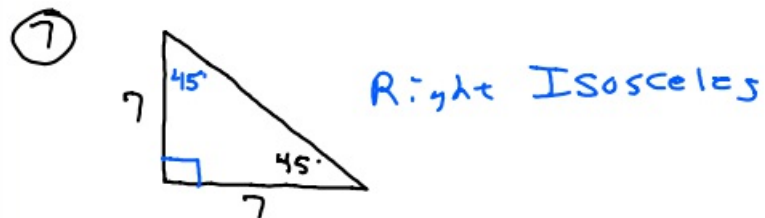
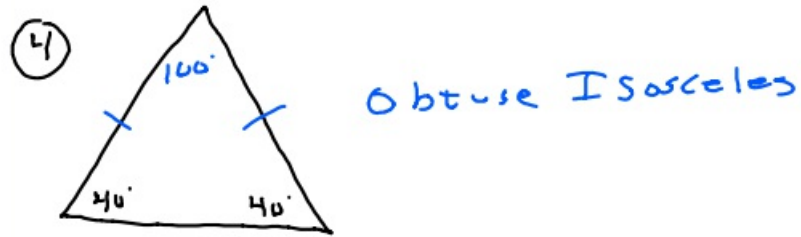


③

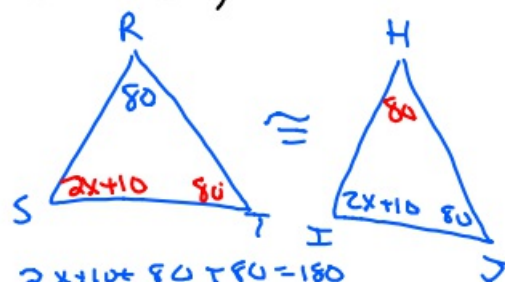


Groups

Classify the triangles



⑧ If $\triangle RST \cong \triangle HIJ$ with $\angle R = 80^\circ$, $\angle I = 2x + 10$, and $\angle J = 80^\circ$, what is the value of x ?



$$2x + 10 + 80 + 80 = 180$$

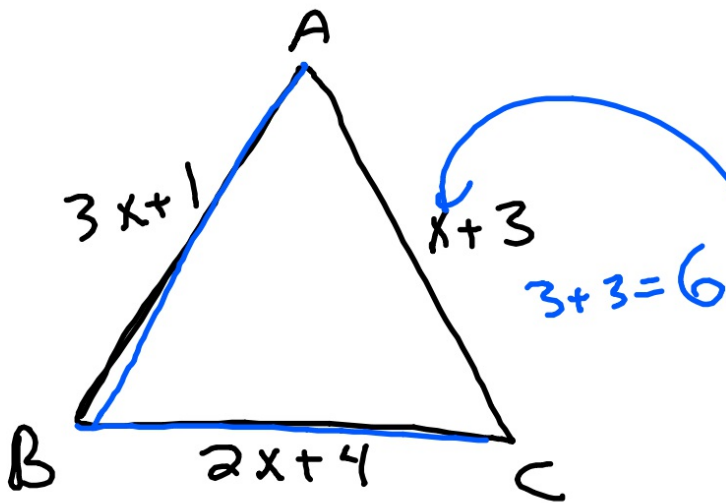
$$2x + 170 = 180$$

$$\underline{-170 \quad -170}$$

$$2x = 10$$

$$x = 5$$

⑨ $\triangle ABC$ is an isosceles \triangle
with $\overline{AB} \cong \overline{BC}$. Find AC .



$$\begin{array}{r} 3x+1 = 2x+4 \\ -2x \quad -2x \\ \hline x+1 = 4 \\ -1 \quad -1 \\ \hline x = 3 \end{array}$$