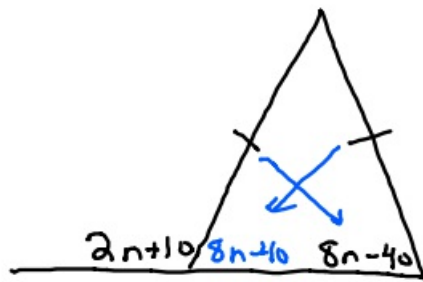


11-12-19 2<sup>nd</sup> Geo

①



Find  $n$ .

$$2n+10+8n-40=180$$

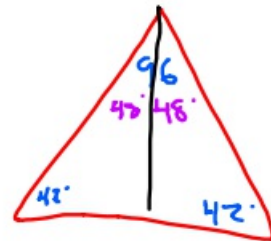
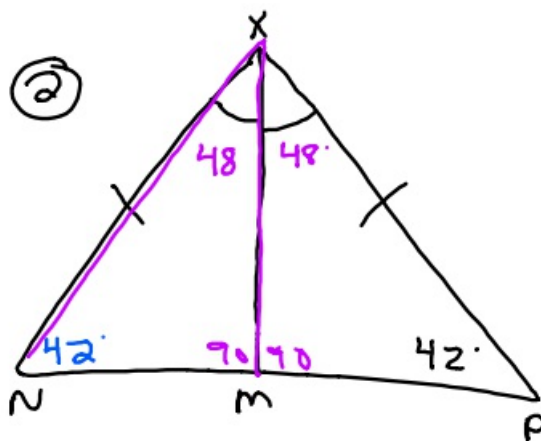
$$10n-30=180$$

$$+30 \quad +30$$

$$\frac{10n}{10} = \frac{210}{10}$$

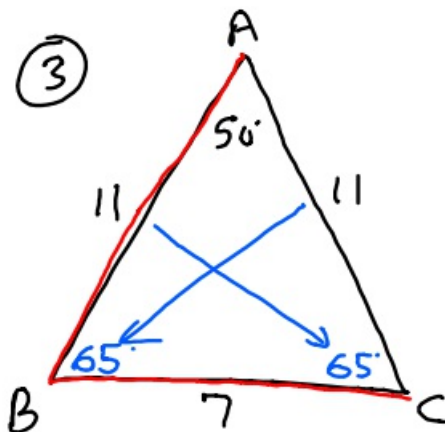
$$n=21$$

②



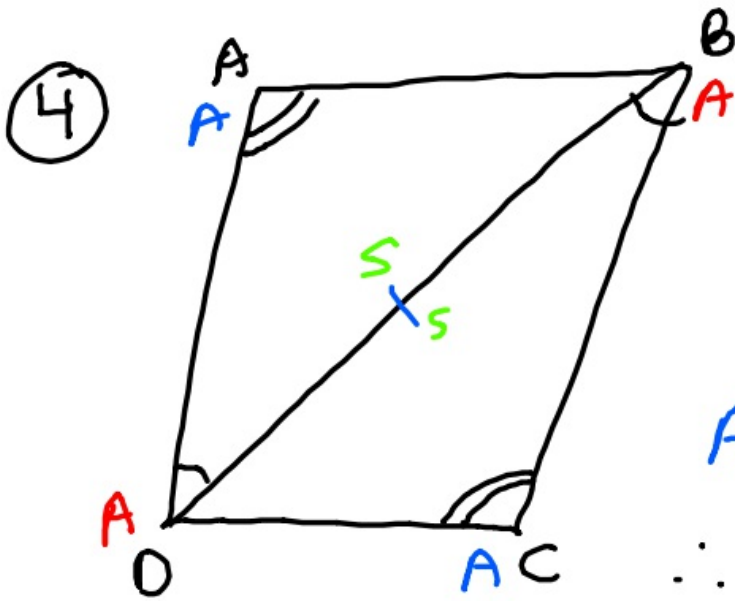
Find  $\angle MXN$ .  $48^\circ$

③

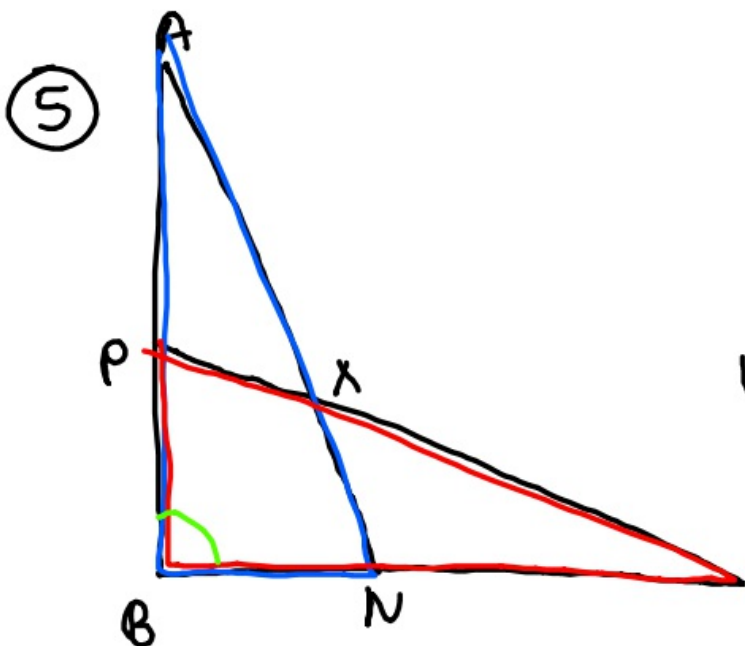


Find  $\angle ABC$ .

$$\frac{130}{2} = 65$$



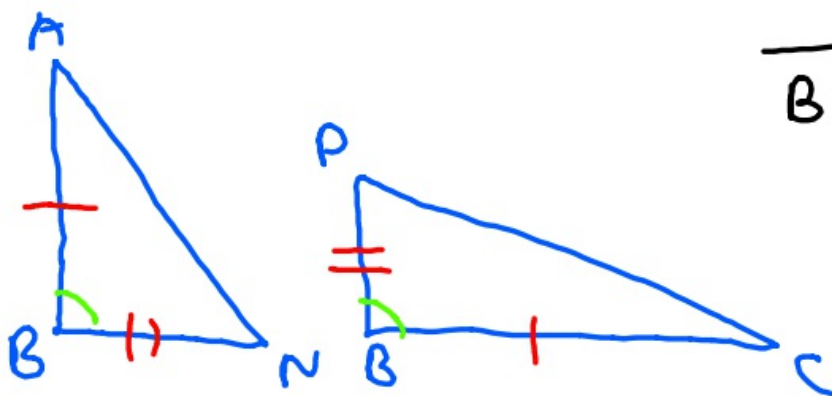
AAS  
 $\therefore \triangle ABD \cong \triangle CDB$



What proves  
 $\triangle BNA \cong \triangle BPC$

$$\overline{AB} \cong \overline{CB}$$

$$\overline{BN} \cong \overline{BP}$$



SAS