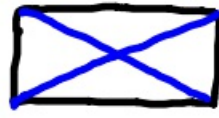
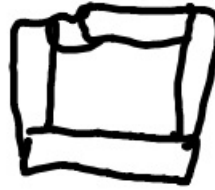


11-14-18 5th Geo

Rectangle



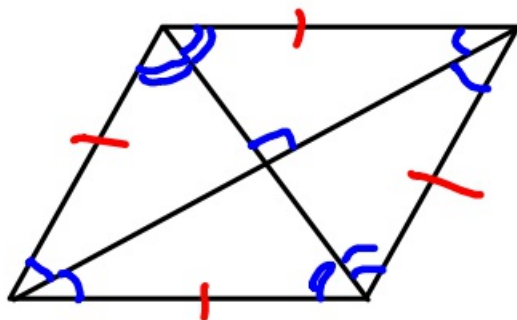
- ① All rules of parallelogram apply.
- ② 4 90° angles
- ③ Diagonals are the same length.



Rhombus

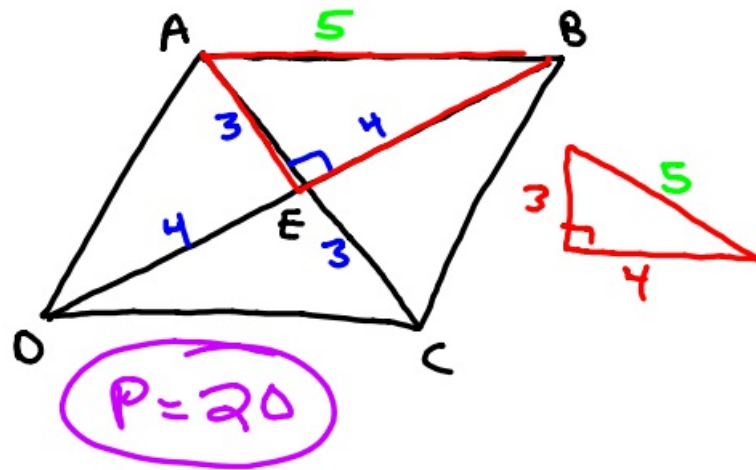


- ① All rules of parallelogram apply.
- ② All sides are = in length

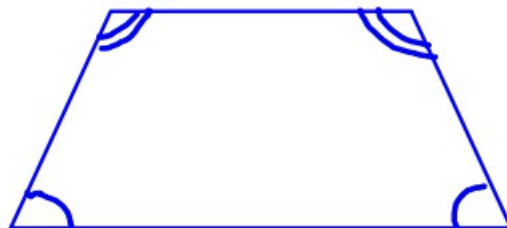
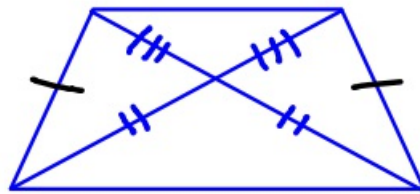


- ③ Diagonals are \perp .
- ④ Diagonals bisect the vertices.

- ① ABCD is a rhombus.
 If $AC=6$ and
 $BD=8$, what is the perimeter.



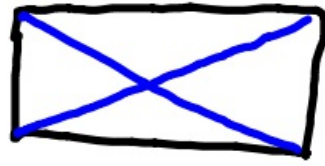
Isosceles trapezoid



Base angles are =.

11-14-18

Rectangle

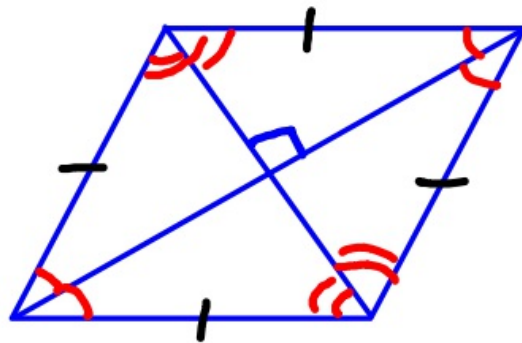


- ① All rules of parallelogram apply.
- ② 4 90° angles
- ③ Diagonals are = in length

Rhombus



- ① All rules of a parallelogram apply.
- ② All sides are = in length.

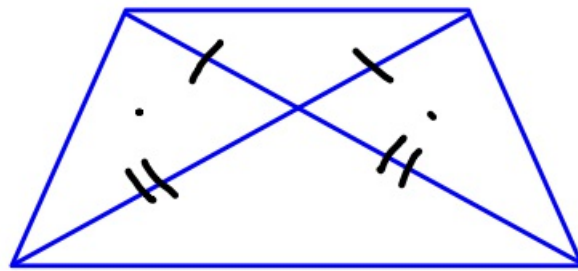


- ③ Diagonals are \perp .
- ④ Diagonals bisect vertices.

Isosceles trapezoid



① Base angles are =



② Diagonals are = in length

① Rhombus ABCD has $AC = 8$ and $BD = 6$. What is the perimeter?

