

11-6-18 5th Geo

① IF 2 sides of a triangle have measurements of 4 and 10, what could the third leg be?

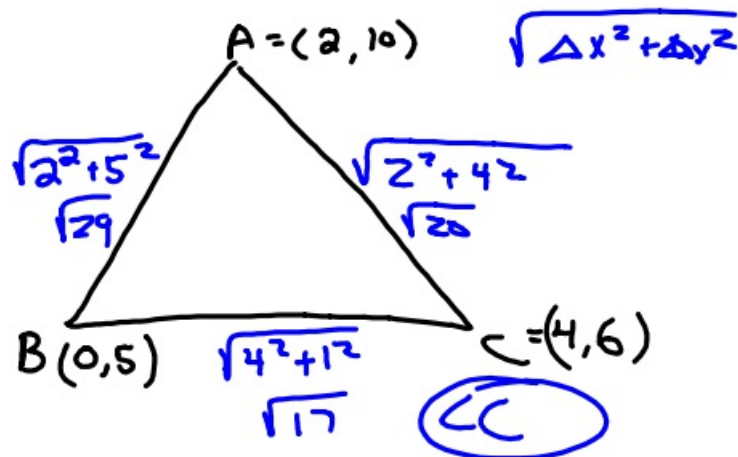
- a.) $6 \leq m \leq 14$ $6 < m < 14$
b.) $14 < m < 6$
c.) $6 < m \leq 14$
d.) None of the above

② Can this be a Δ :

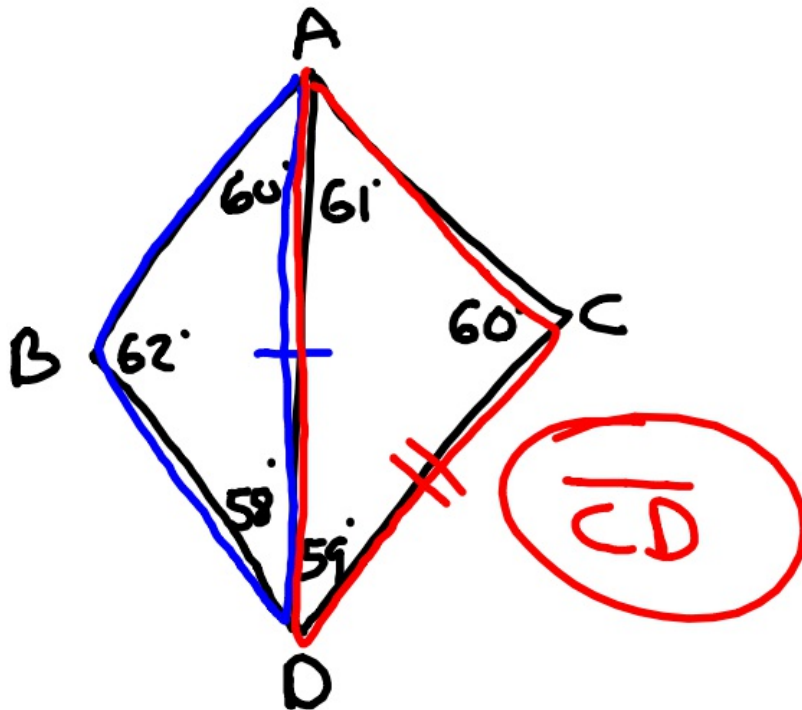
$(2, 7), 11$ NO
5 9

11, 11, 11 Yes

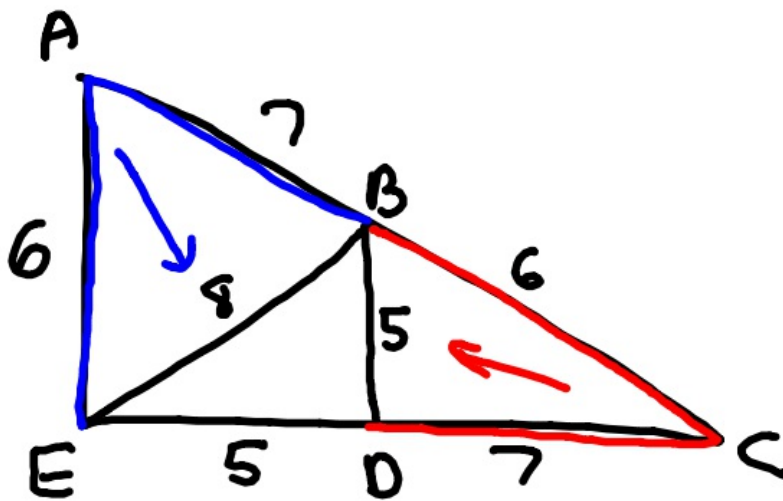
③ Which angle is largest in ΔABC below:



④ Largest side is ?

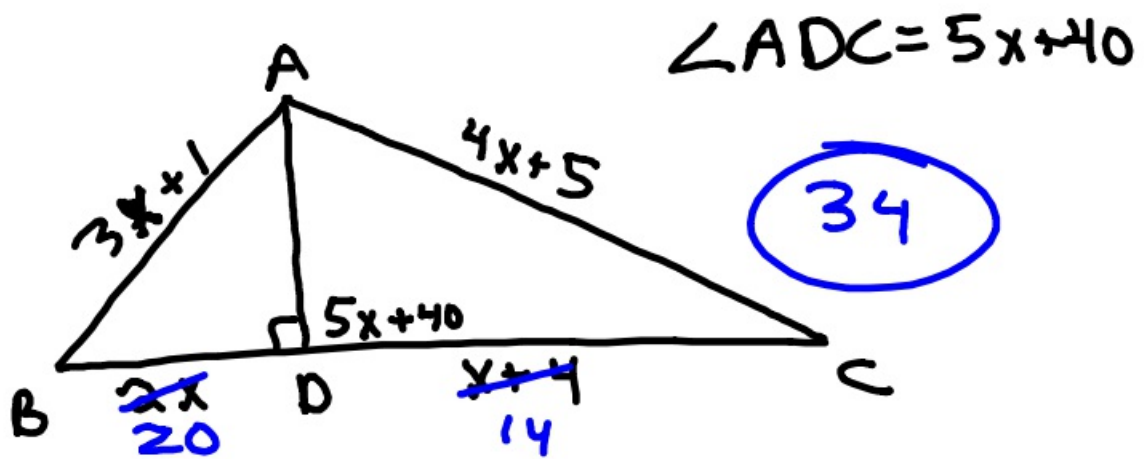


⑤



$\angle EAB > \angle BCD$ (A) > (B)

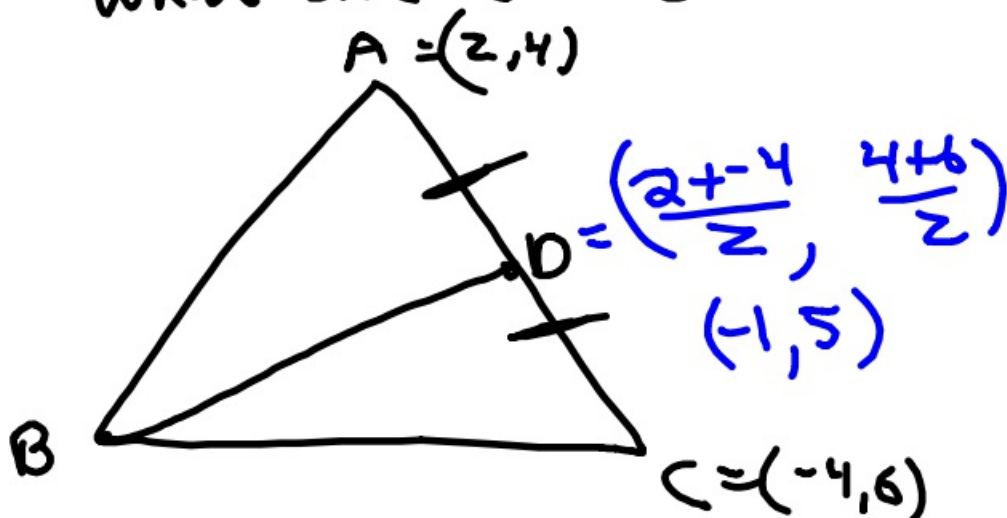
⑥ In $\triangle ABC$, \overline{AD} is the altitude. Find BC .



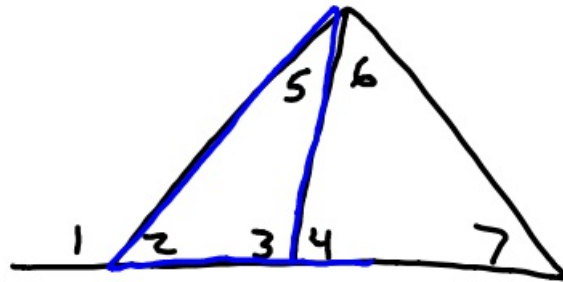
$$5x + 40 = 90$$

$$x = 10$$

⑦ In $\triangle ABC$, \overline{BD} is the median. If $A = (2, 4)$, $B = (8, 10)$, and $C = (-4, 6)$, what are the coordinates of D ?



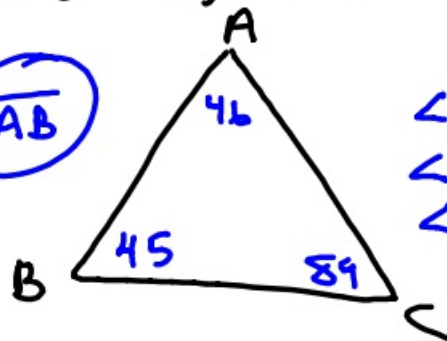
- ⑧ Which angles are less than $\angle 4$



$\angle 2, \angle 5$

- ⑨ Which side is longest in $\triangle ABC$ if $\angle A = 4n + 10$, $\angle B = 5n$, and $\angle C = n + 80$.

\overline{AB}



$$\begin{aligned}\angle A &= 4 \cdot 9 + 10 = 46^\circ \\ \angle B &= 5 \cdot 9 = 45^\circ \\ \angle C &= 9 + 80 = 89^\circ\end{aligned}$$

$$\begin{aligned}\angle A + \angle B + \angle C &= 180^\circ \\ 4n + 10 + 5n + n + 80 &= 180^\circ\end{aligned}$$

$$10n + 90 = 180$$

$$n = 9$$

11-6-18 6th Geo

① IF 2 sides of a Δ have measurements of 4 and 10, what could the third leg be?

a.) $6 \leq m \leq 14$

b.) $14 < m < 6$

$6 < m < 14$

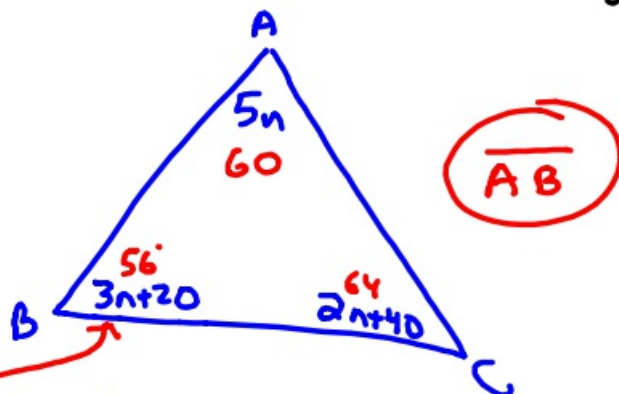
c.) $6 < m \leq 14$

d.) None of the above

② Can this be a Δ ?

$\boxed{4, 7} \parallel 11$ NO
 $3 < m < 11$

③ In ΔABC , $\angle A = 5n$
 $\angle B = 3n + 20$, and $\angle C = 2n + 40$.
Which side is longest?



$5n + 3n + 20 + 2n + 40 = 180$

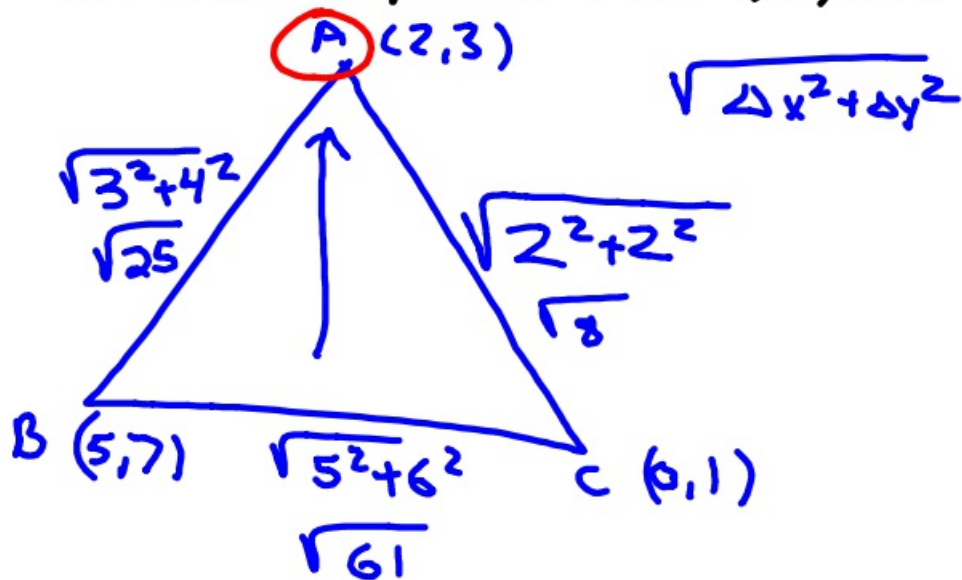
$10n + 60 = 180$

$n = 12$

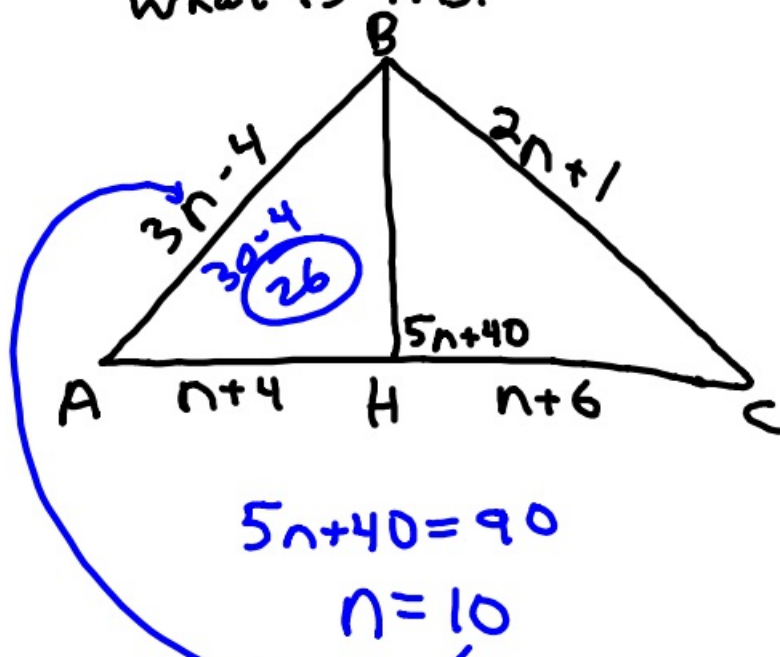
④ In $\triangle ABC$, $A = (2, 3)$

$B = (5, 7)$, and $C = (0, 1)$.

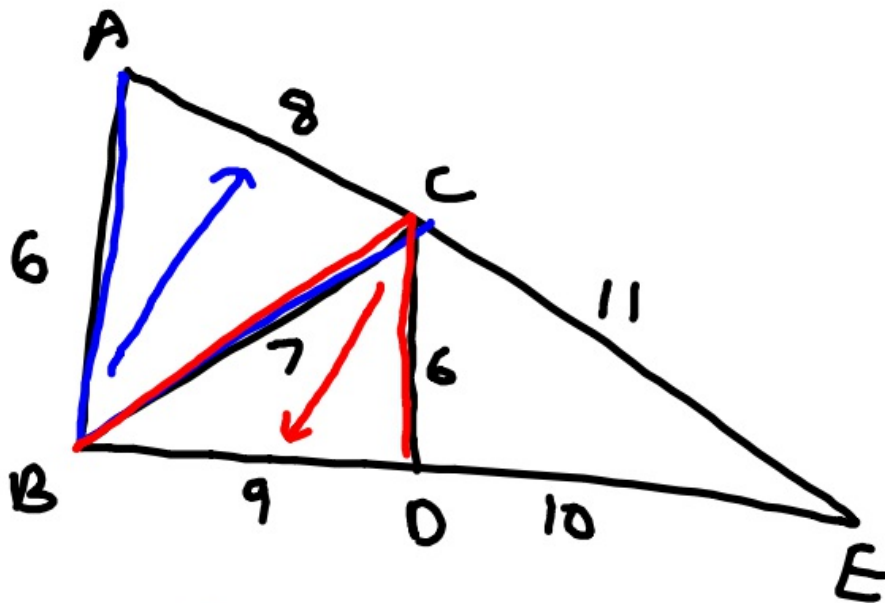
Which angle is the largest?



⑤ In $\triangle ABC$, \overline{BH} is the altitude. $\angle BHC = 5n + 40$. What is $\angle A$?



⑥

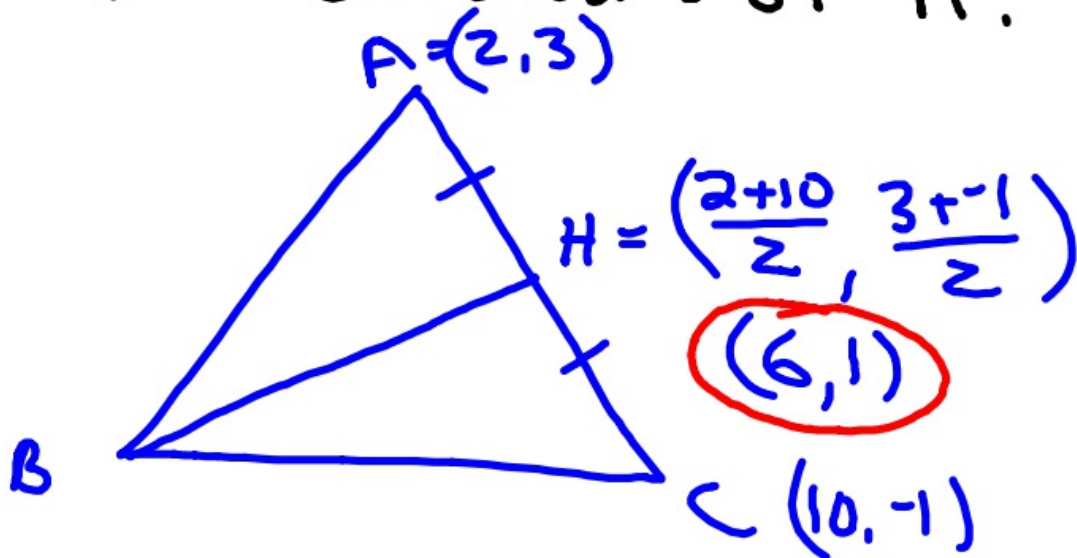


$$\angle ABC < \angle BCD$$

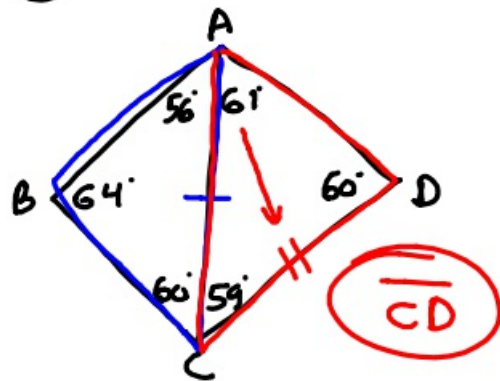
⑦ In $\triangle ABC$, $A = (2, 3)$

$B = (6, 7)$, and $C = (10, -1)$.

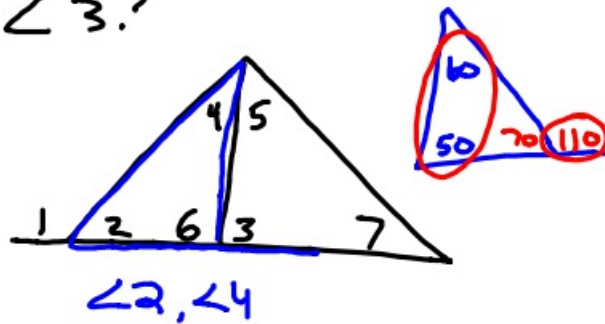
If \overline{BH} is median, what are the coordinates of H ?



⑧ Which side is longest



⑨ Which angles are less than $\angle 3$?



⑩ Which sides could be a Δ ?

- ~~a)~~ 8, 6, 1 2 14
- ~~b)~~ 5, 8, 256
- c.) 4, 4, 3 0 8
- ~~d)~~ 2, 3, 5 1 5

