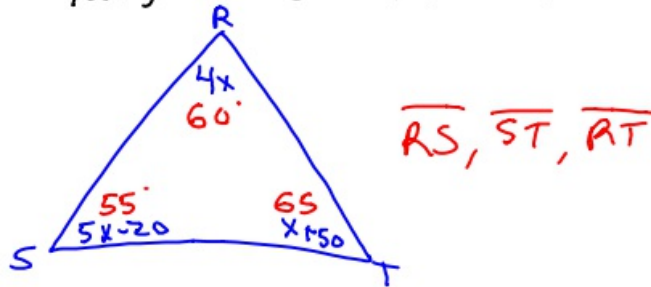


11-7-17 5<sup>th</sup> Geo

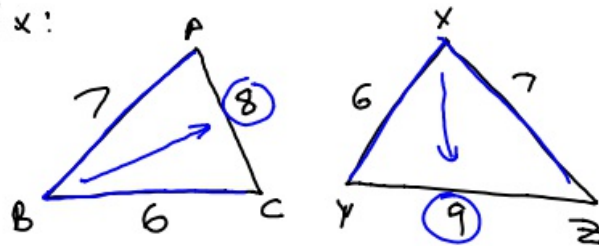
- ① In  $\triangle RST$ ,  $\angle R = 4x$   
 $\angle S = 5x - 20$ , and  $\angle T = x + 50$ .  
 Put sides in order from largest to smallest?



$$5x - 20 + x + 50 + 4x = 180$$

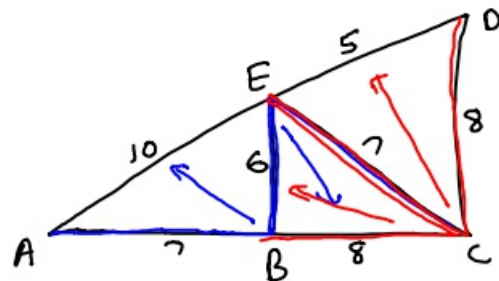
$$\begin{array}{r} 10x + 30 = 180 \\ -30 \quad -30 \\ \hline 10x = 150 \\ x = 15 \end{array}$$

Ex:



Who is larger?

$\angle B$   $\angle X$



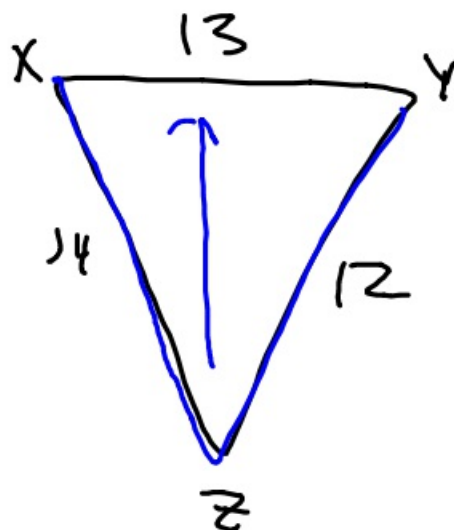
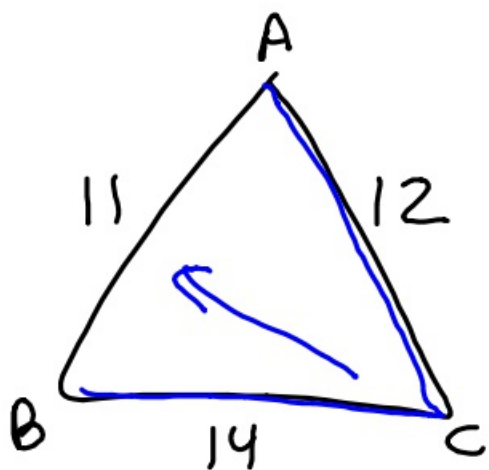
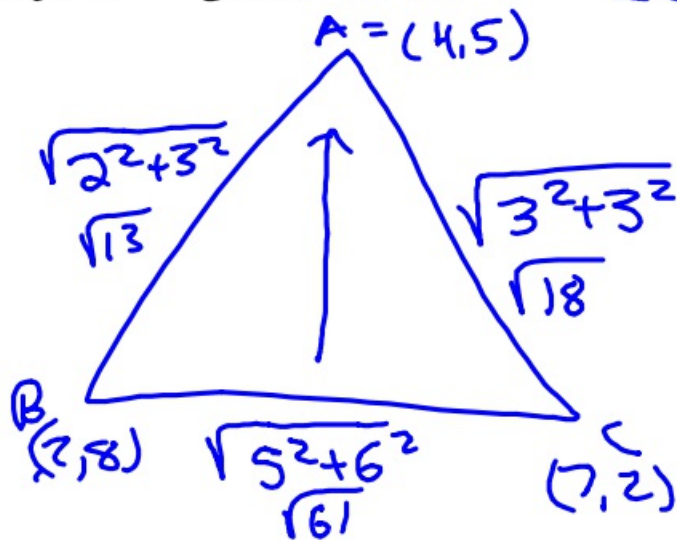
①  $\angle ABE > \angle BEC$

②  $\angle ECD < \angle ECB$

In  $\triangle ABC$ ,  $A = (4, 5)$

$B = (2, 8)$ , and  $C = (7, 2)$ .

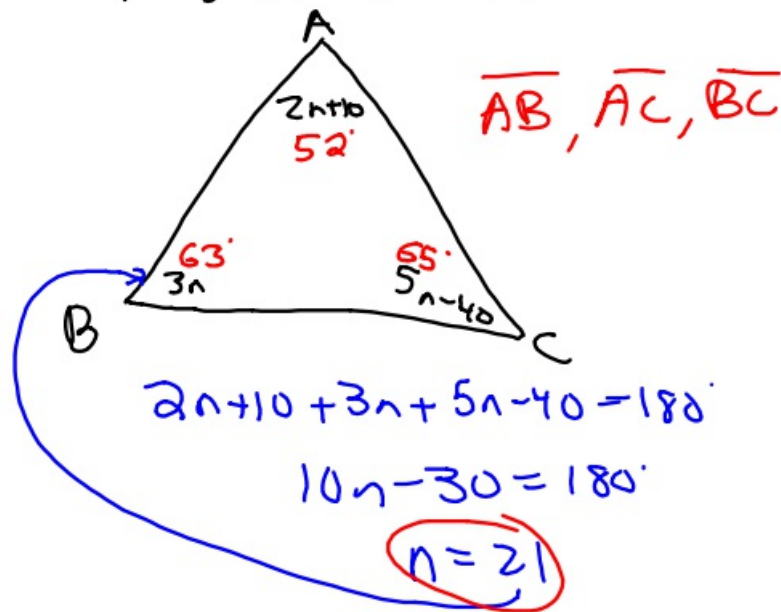
What is the largest angle and shortest?



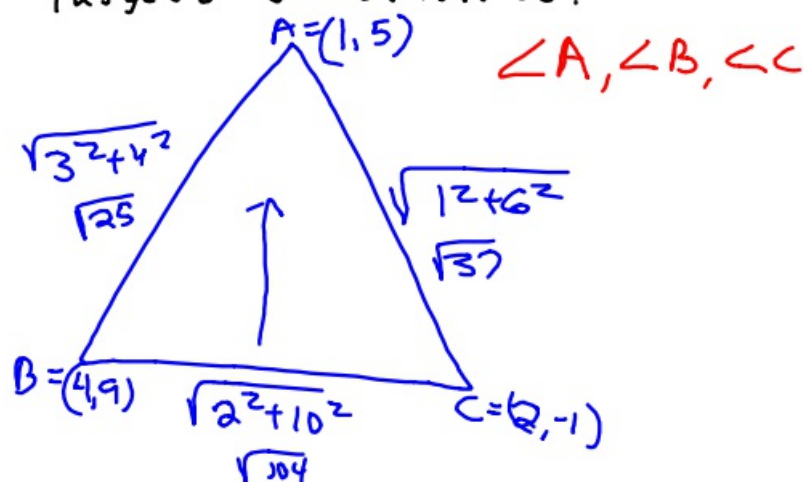
$\angle Z > \angle C$

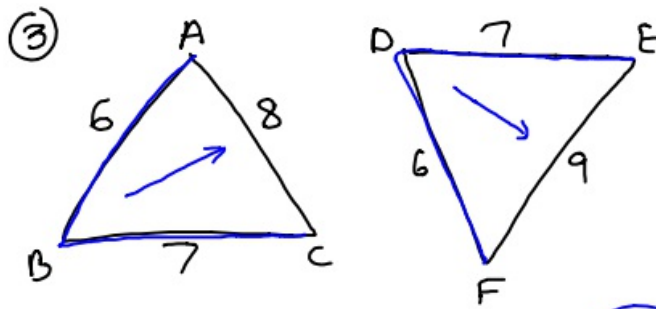
11-7-17 6<sup>th</sup> Geo

- ① In  $\triangle ABC$ ,  $\angle A = 2n + 10$ ,  
 $\angle B = 3n$ ,  $\angle C = 5n - 40$ .  
Put the sides in order from  
largest to smallest.

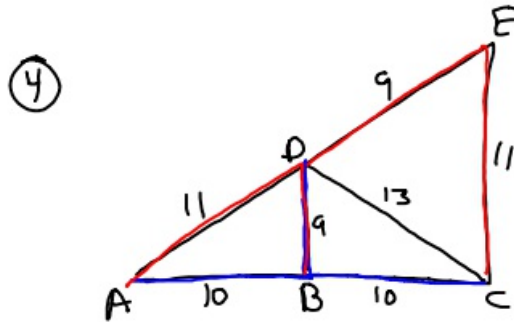


- ② In  $\triangle ABC$ ,  $A = (1, 5)$ ,  
 $B = (4, 9)$ , and  $C = (2, -1)$ .  
Put angles in order from  
largest to smallest.





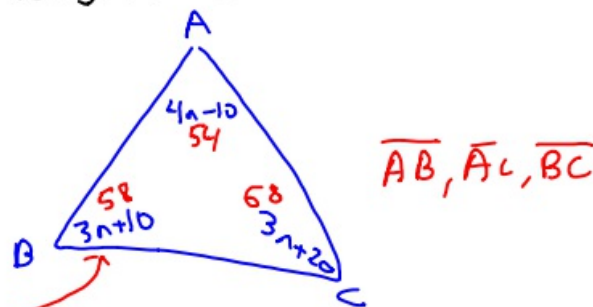
Who is larger  $\angle B$  or  $\angle D$ ?



(A)  $\angle ABD < \angle CBD$

(B)  $\angle DEC > \angle BDA$

- ⑤ In  $\triangle ABC$ ,  $\angle A = 4n - 10$ ,  
 $\angle B = 3n + 10$ ,  $\angle C = 3n + 20$ .  
 Put sides in order from  
 longest to shortest.



$$4n - 10 + 3n + 20 + 3n + 10 = 180$$

$$10n + 20 = 180$$

$$n = 16$$