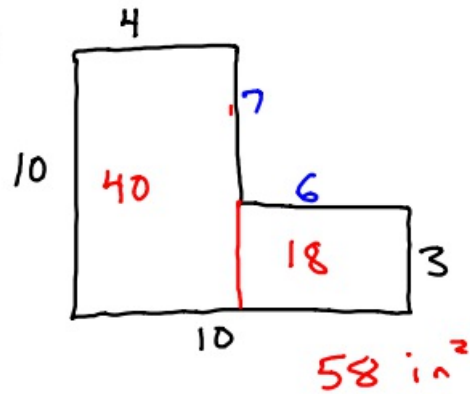
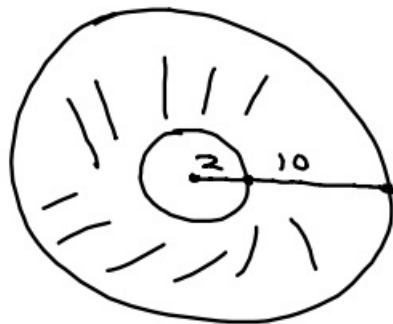


2-15-18 5th Geo

①



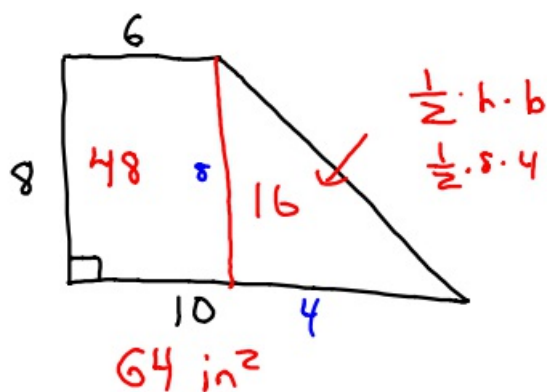
②



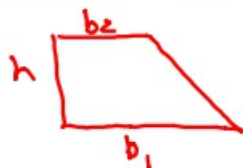
Exact area
of shaded
region

$$\begin{aligned} \text{Whole - hole} \\ \pi \cdot 12^2 - \pi \cdot 2^2 \\ 144\pi - 4\pi \\ 140\pi \end{aligned}$$

③

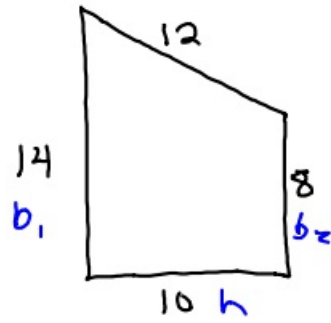


$$\text{Area Trapezoid} = \frac{1}{2} h (b_1 + b_2)$$



$$\begin{aligned} \frac{1}{2} \cdot 8 \cdot (10 + 6) \\ \frac{1}{2} \cdot 8 \cdot 16 \\ 64 \text{ in}^2 \end{aligned}$$

④



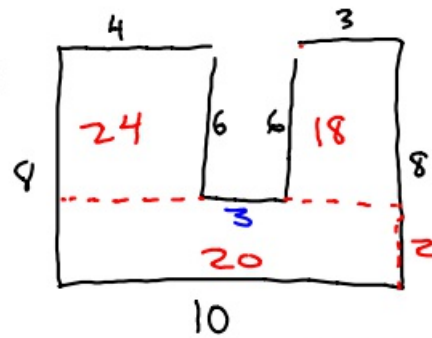
$$A = \frac{1}{2} h (b_1 + b_2)$$

$$\frac{1}{2} \cdot 10 (14 + 8)$$

$$\frac{1}{2} \cdot 10 \cdot 22$$

$$110$$

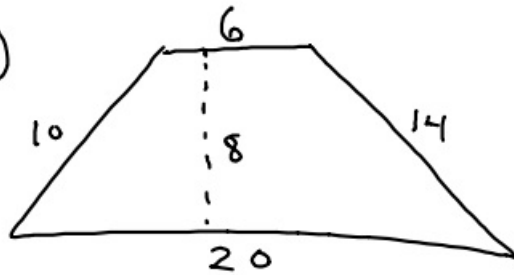
⑤



$$80 - 6 \cdot 3 = 62$$

$$24 + 18 + 20 = 62 \text{ in}^2$$

⑥



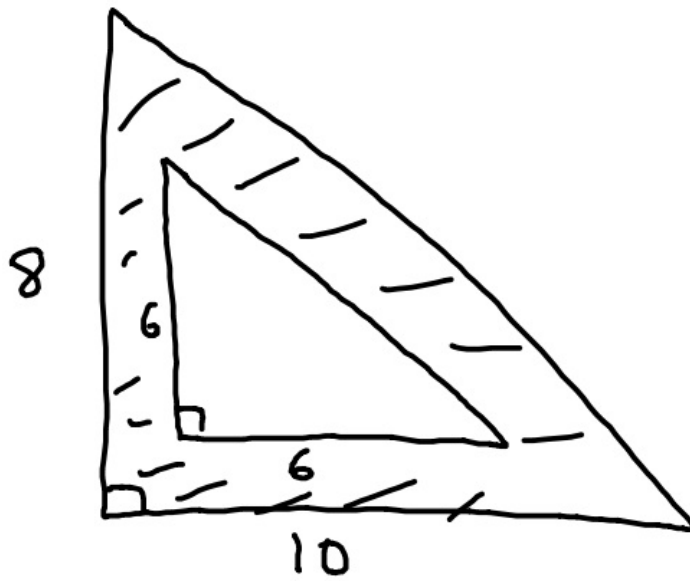
$$\frac{1}{2} \cdot h \cdot (b_1 + b_2)$$

$$\frac{1}{2} \cdot 8 (20 + 6)$$

$$\frac{1}{2} \cdot 8 \cdot 26$$

$$104 \text{ in}^2$$

7

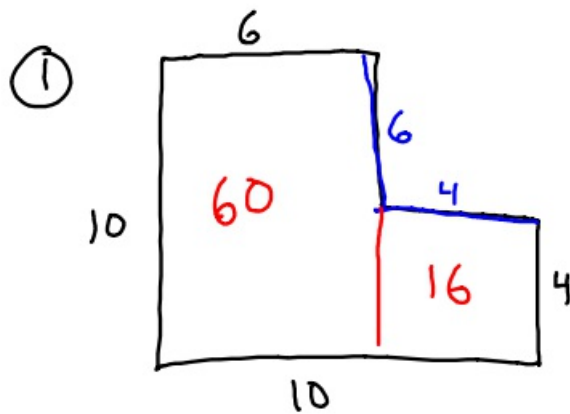


$$\frac{1}{2} \cdot 10 \cdot 8 - \frac{1}{2} \cdot 6 \cdot 6$$

$$40 - 18$$

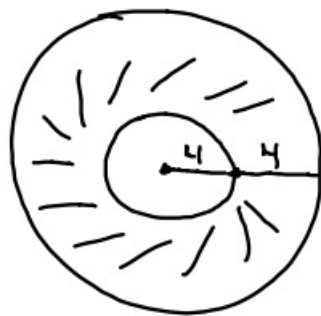
$$22 \text{ in}^2$$

2-15-18 6th Geo



76 in²

②



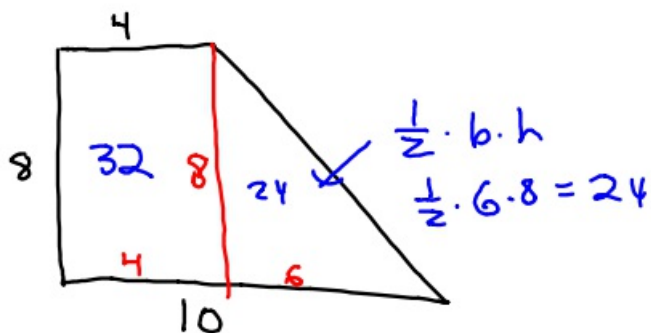
Give exact
area of
shaded region

Whole - hole

$$\pi \cdot 8^2 - \pi \cdot 4^2$$

$$64\pi - 16\pi = 48\pi$$

③



56 in²

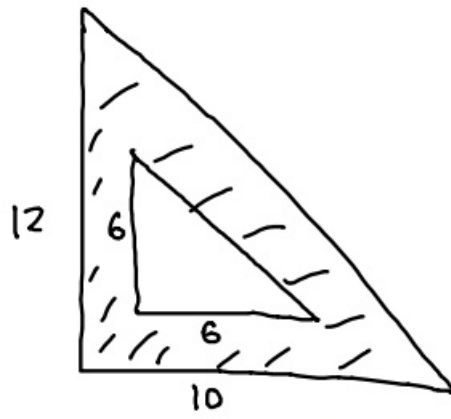
Area of trapezoid = $\frac{1}{2} \cdot h (b_1 + b_2)$

$$\frac{1}{2} \cdot 8 (10 + 4)$$

$$\frac{1}{2} \cdot 8 \cdot 14$$

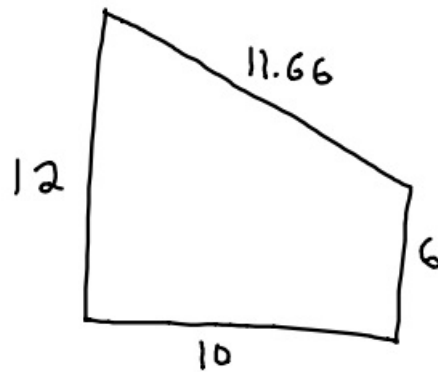
56

④



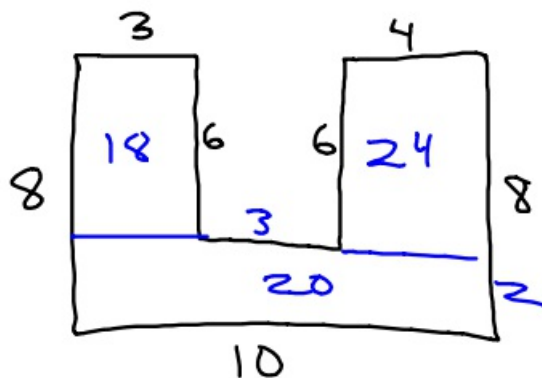
Whole - hole
 $\frac{1}{2} \cdot 12 \cdot 10 - \frac{1}{2} \cdot 6 \cdot 6$
 $60 - 18$
 42 in^2

⑤



$\frac{1}{2} \cdot h (b_1 + b_2)$
 $\frac{1}{2} \cdot 10 (12 + 6)$
 $\frac{1}{2} \cdot 10 \cdot 18$
 90 in^2

⑥



62 in^2

