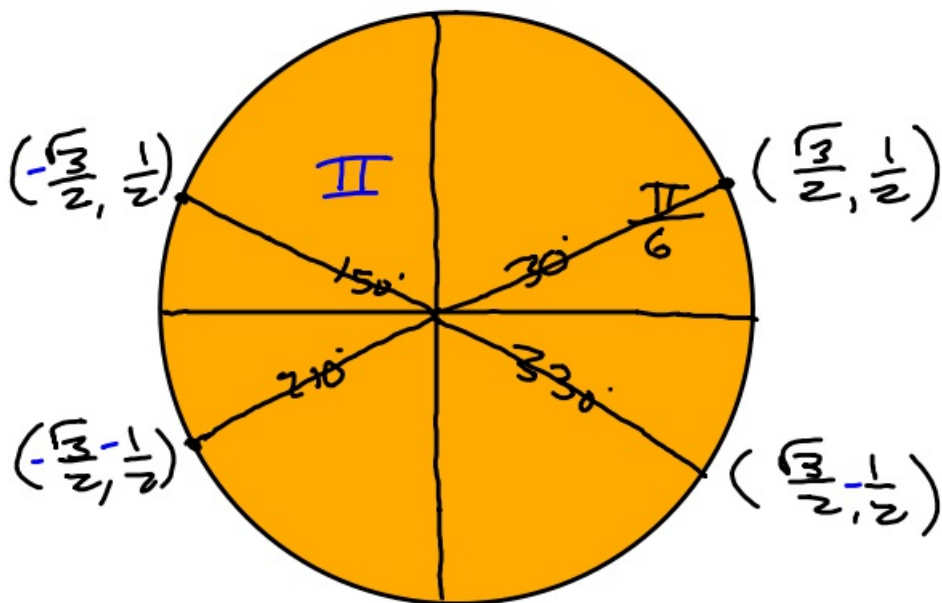
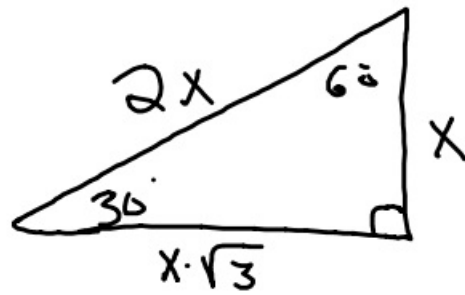
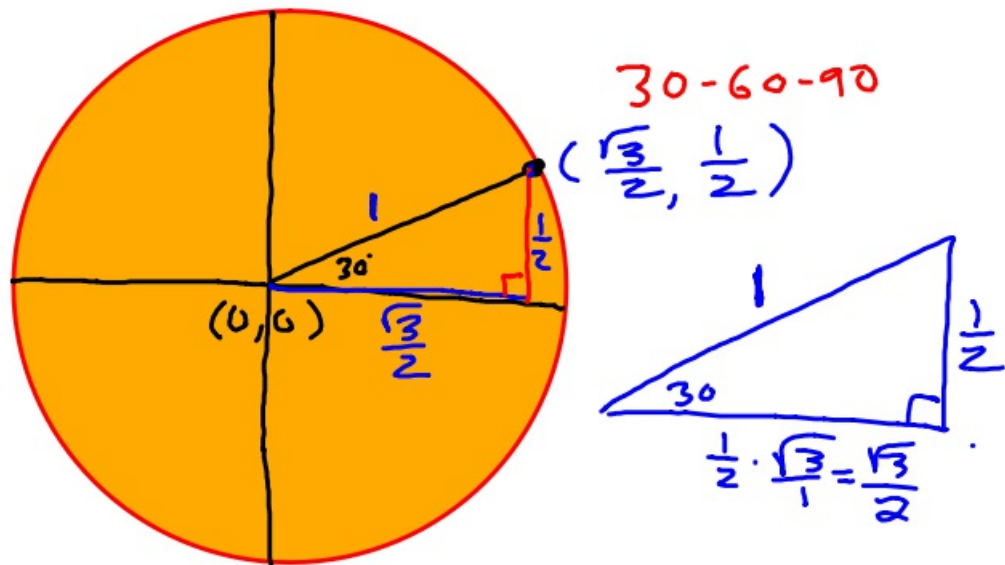
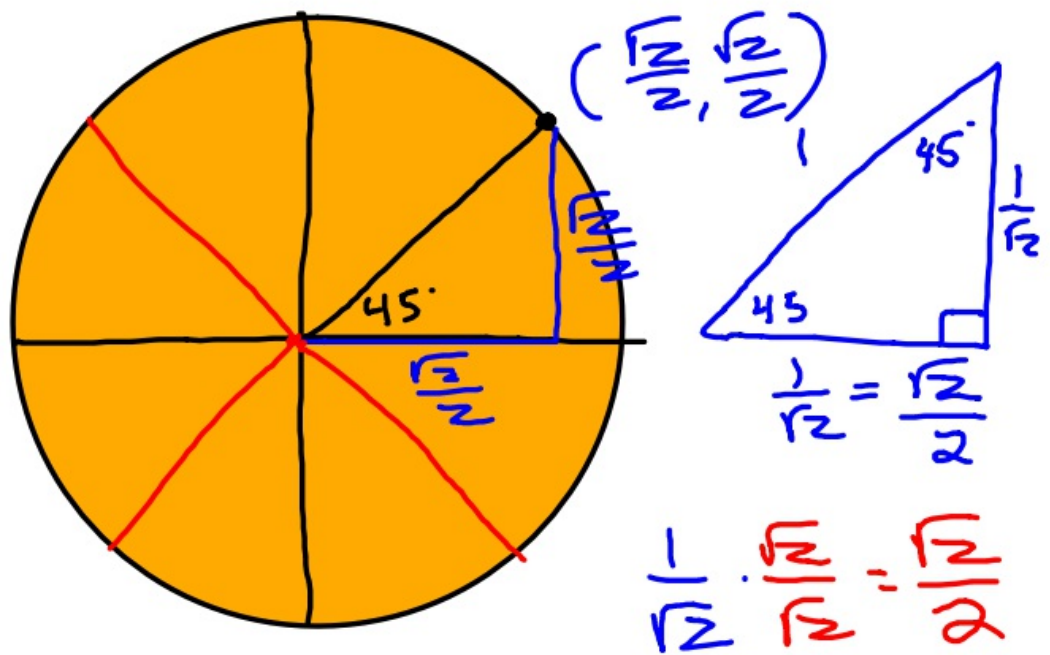
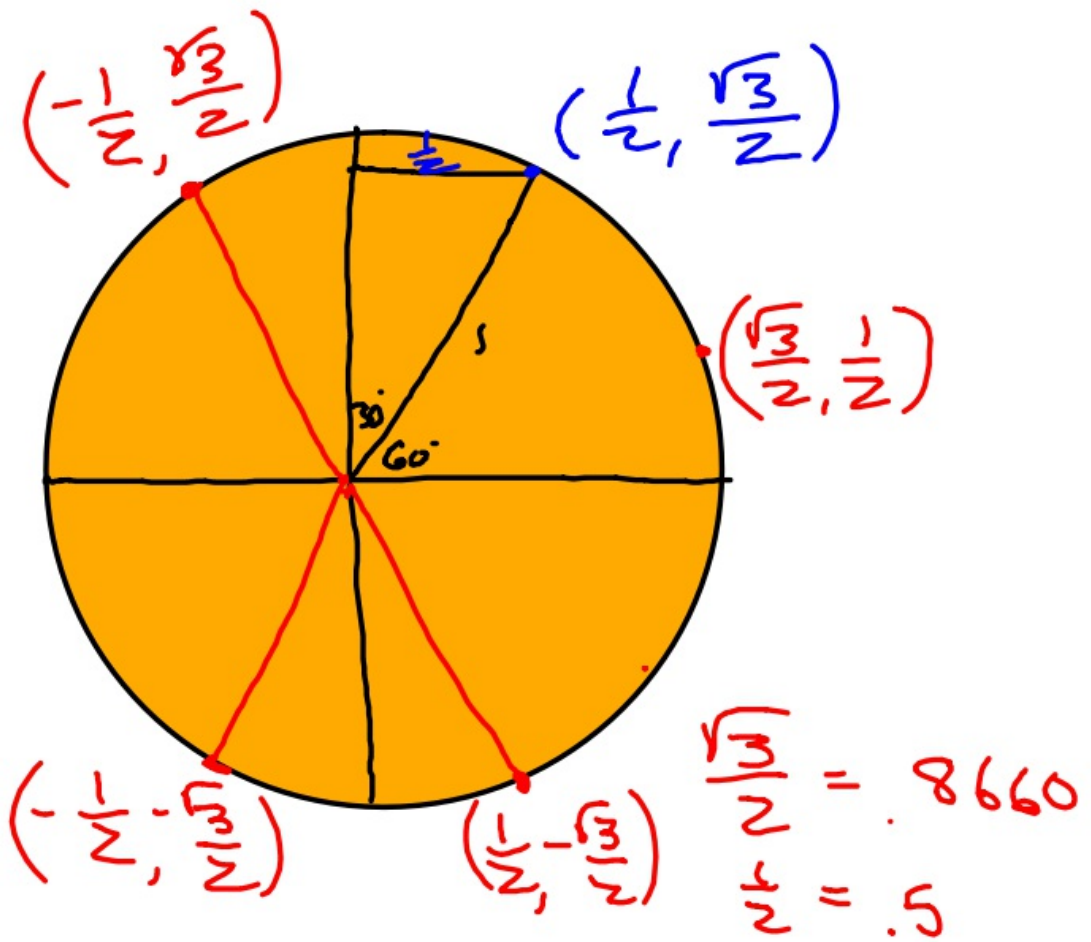
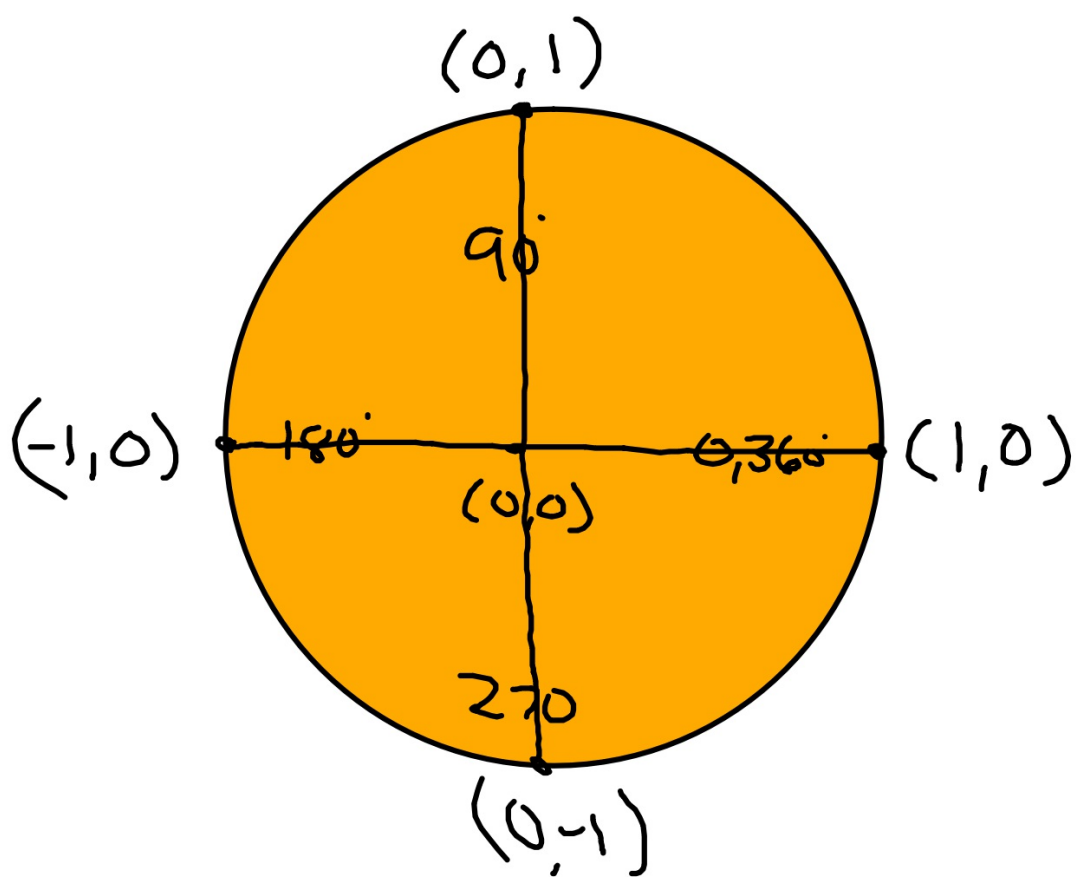


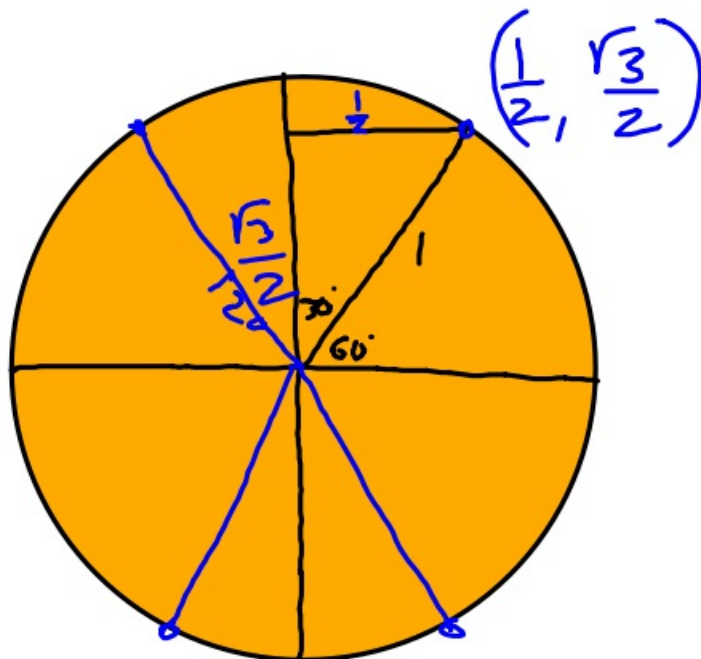
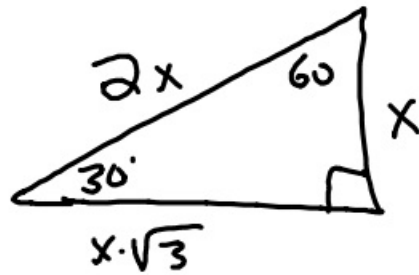
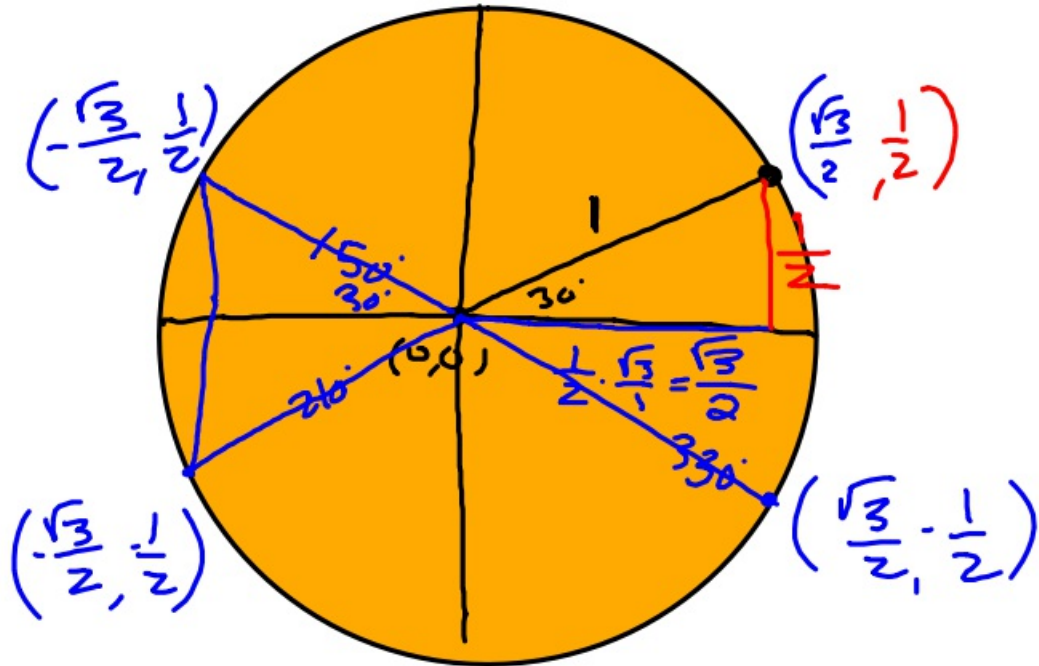
2-16-18 1st Trig

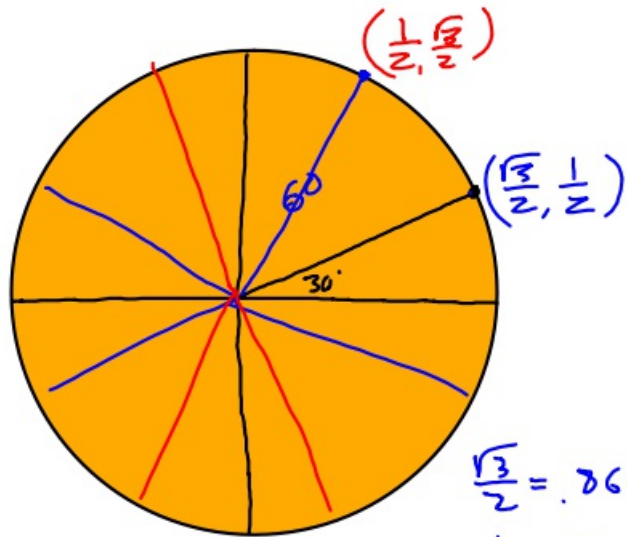
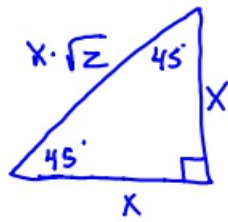
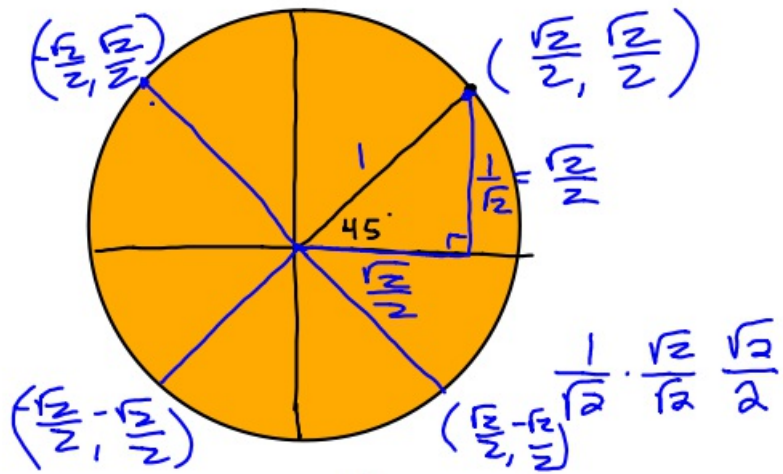




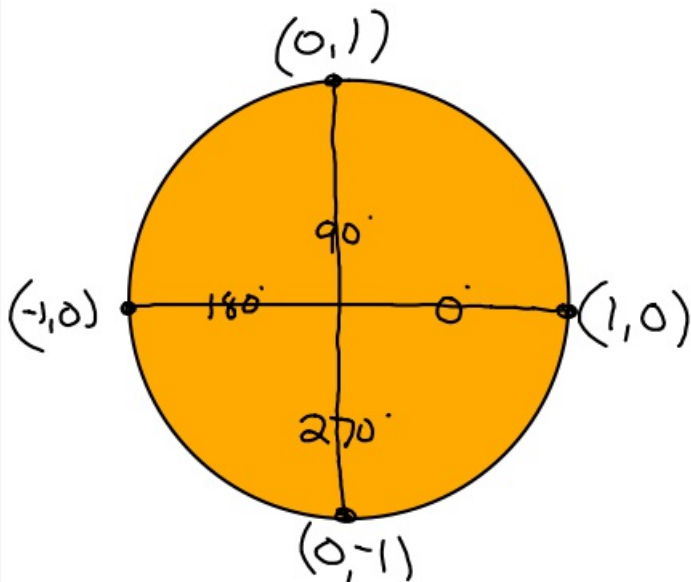


2-16-18 3rd Trig

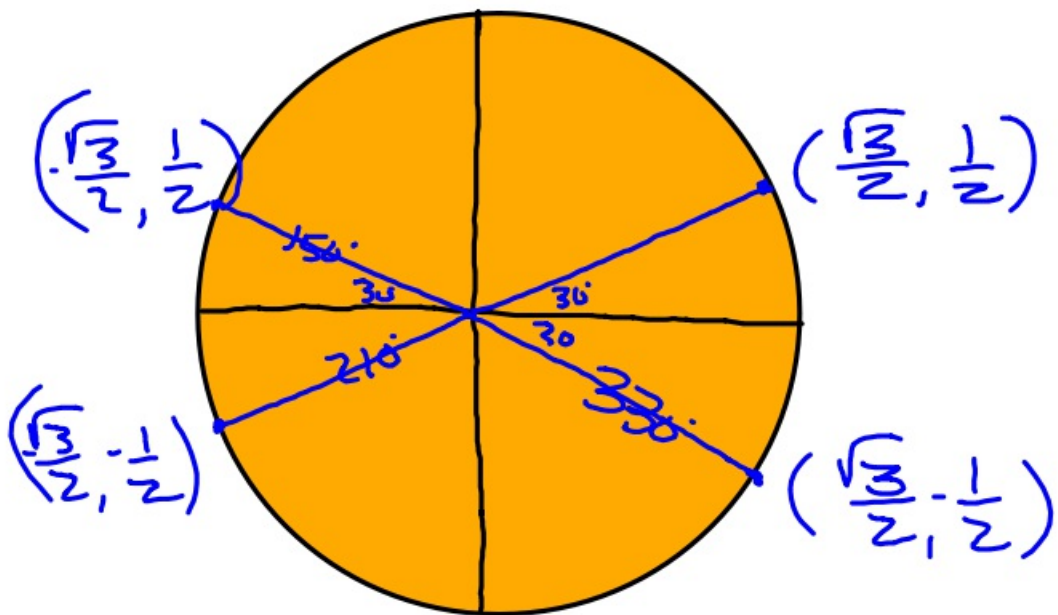
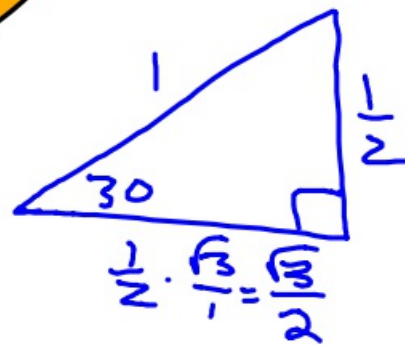
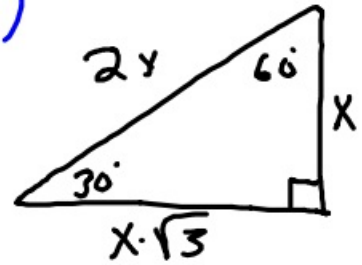
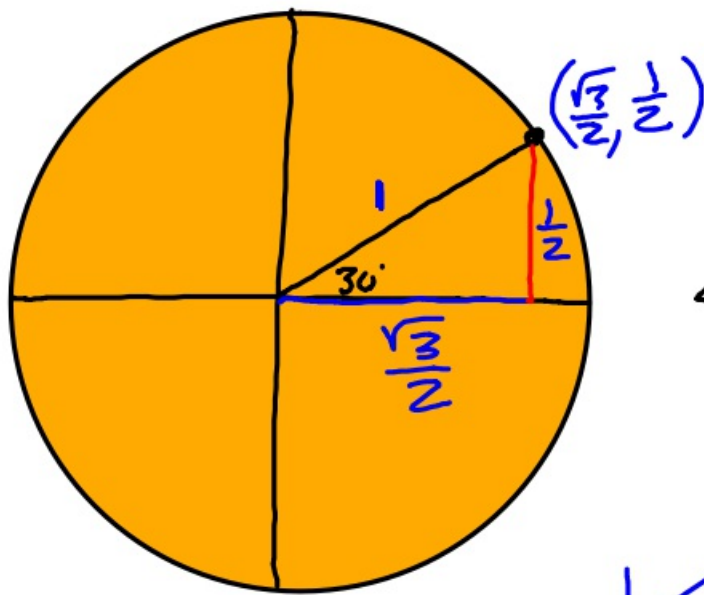


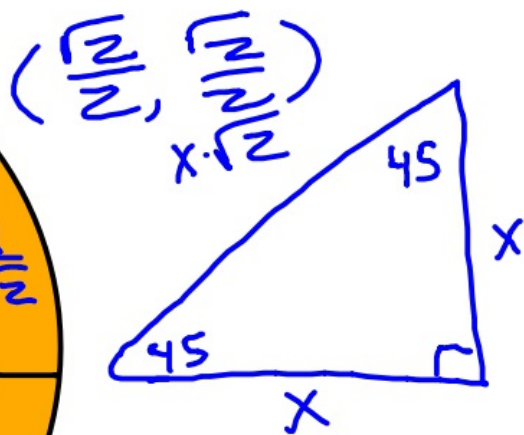
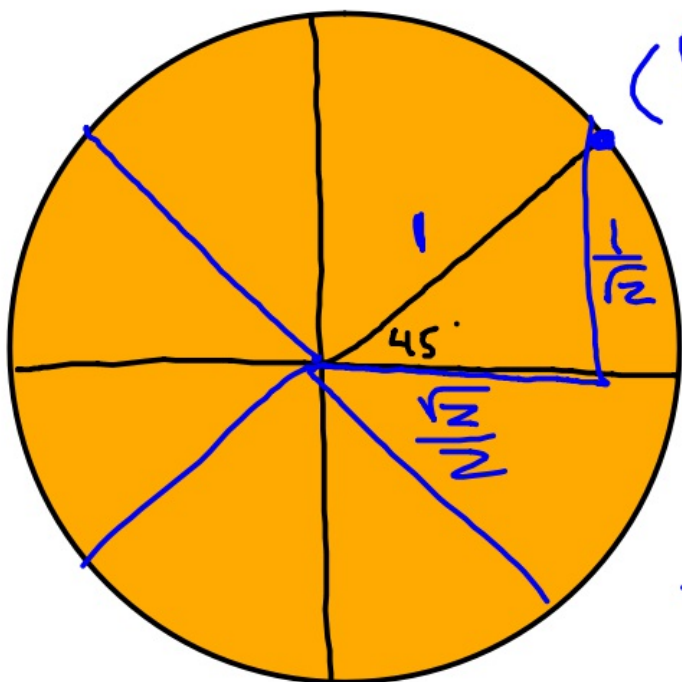
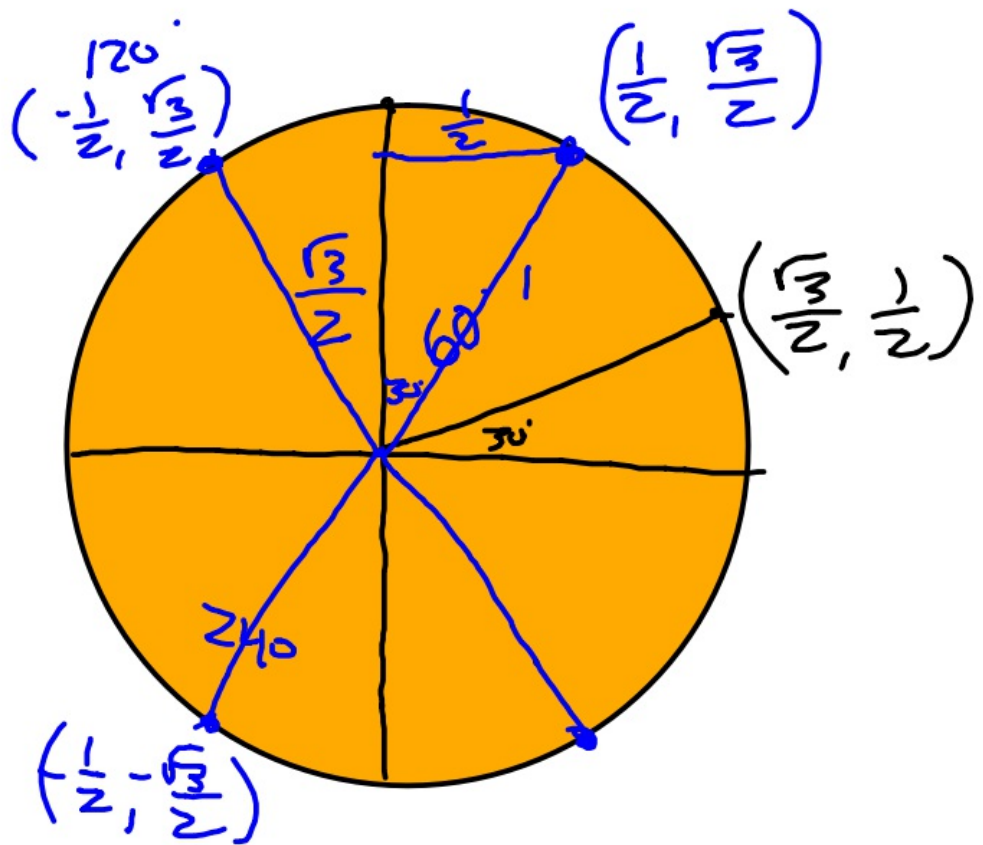


$\frac{\sqrt{3}}{2} = .8660$
 $\frac{1}{2} = .5$



2-16-18 4th Trig





$$\frac{1}{\sqrt{2}} \cdot \frac{\sqrt{2}}{2} = \frac{\sqrt{2}}{2}$$

