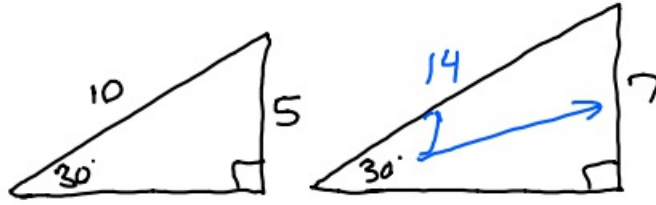
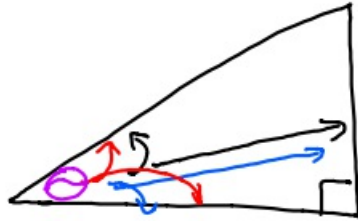


2-6-20 2nd Geo



1 to 2 $\frac{1}{2}$



$$\sin \theta = \frac{\text{opp.}}{\text{hyp.}}$$

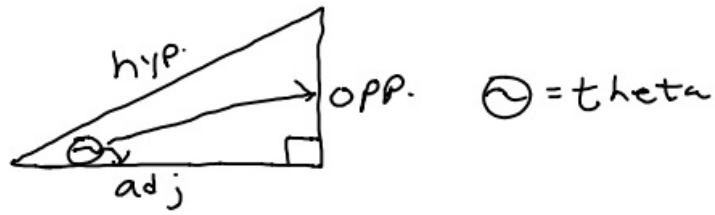


$$\cos \theta = \frac{\text{adj.}}{\text{hyp.}}$$



$$\tan \theta = \frac{\text{opp.}}{\text{adj.}}$$

SOHCAHTOA



①



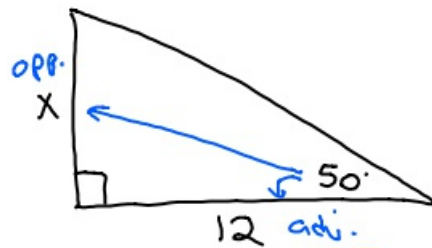
SO/H CAH TUA

$$\frac{\sin 40^\circ}{1} = \frac{X}{10}$$

$$X = 10 \cdot \sin 40^\circ$$

$$X \approx 6.4$$

②



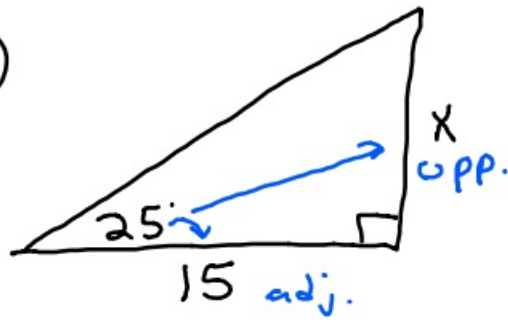
SOH CAH TUA

$$\frac{\tan 50^\circ}{1} = \frac{X}{12}$$

$$X = 12 \cdot \tan 50^\circ$$

$$X \approx 14.3$$

3



SOH CAH TOA

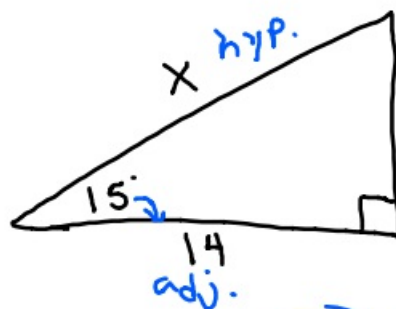
$$\frac{\tan 25^\circ}{1} = \frac{x}{15}$$

$$x = 15 \cdot \tan 25^\circ$$

$$x \approx 6.99 \dots$$

$$7.0$$

4



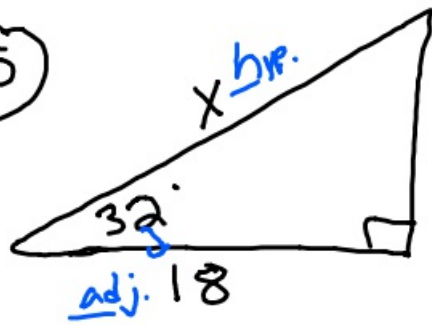
SOH CAH TOA

$$\frac{\cos 15^\circ}{1} = \frac{14}{x}$$

$$\frac{x \cdot \cos 15^\circ}{\cancel{\cos 15^\circ}} = \frac{14}{\cancel{\cos 15^\circ}}$$

$$x \approx 14.5$$

5



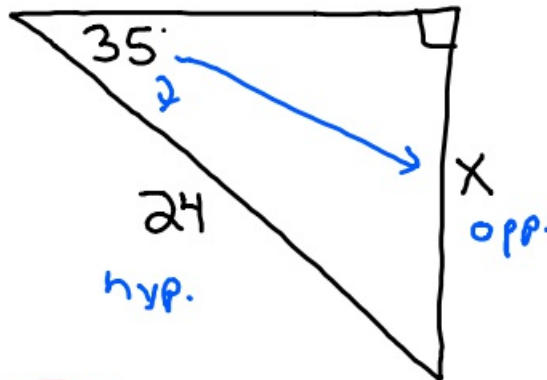
SOH CAH TOA

$$\frac{\cos 32^\circ}{1} = \frac{18}{X}$$

$$X \cdot \frac{\cos 32^\circ}{\cancel{\cos 32^\circ}} = \frac{18}{\cancel{\cos 32^\circ}}$$

$$X \approx 21.2$$

6



SOH CAH TOA

$$\frac{\sin 35^\circ}{1} = \frac{X}{24}$$

$$X = 24 \cdot \sin 35^\circ$$

$$X \approx 13.7$$

