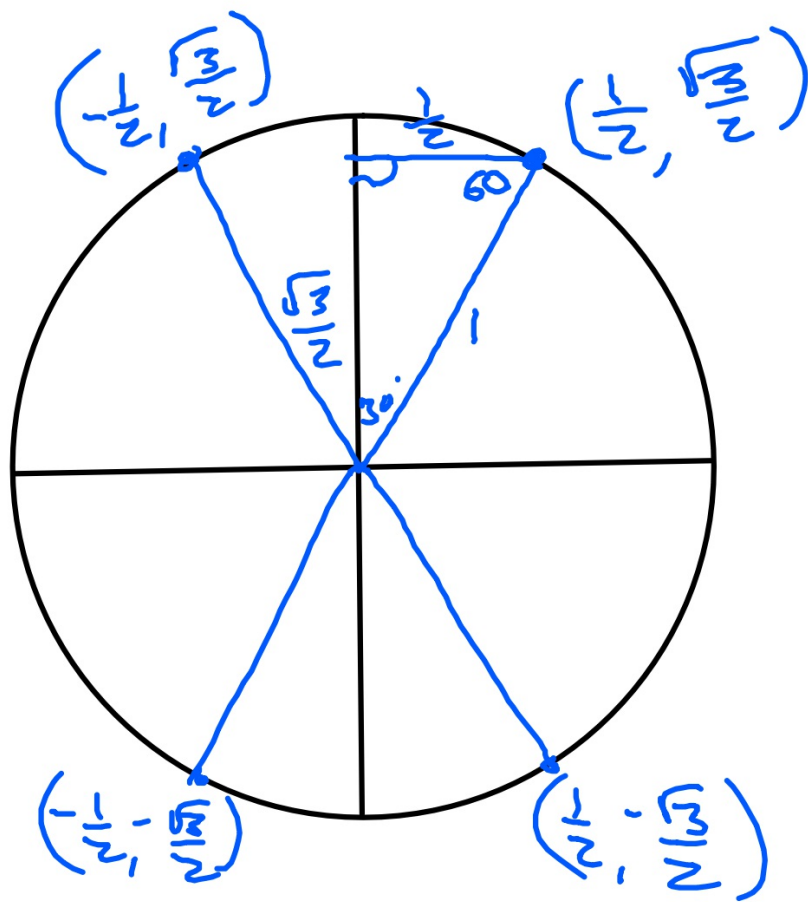
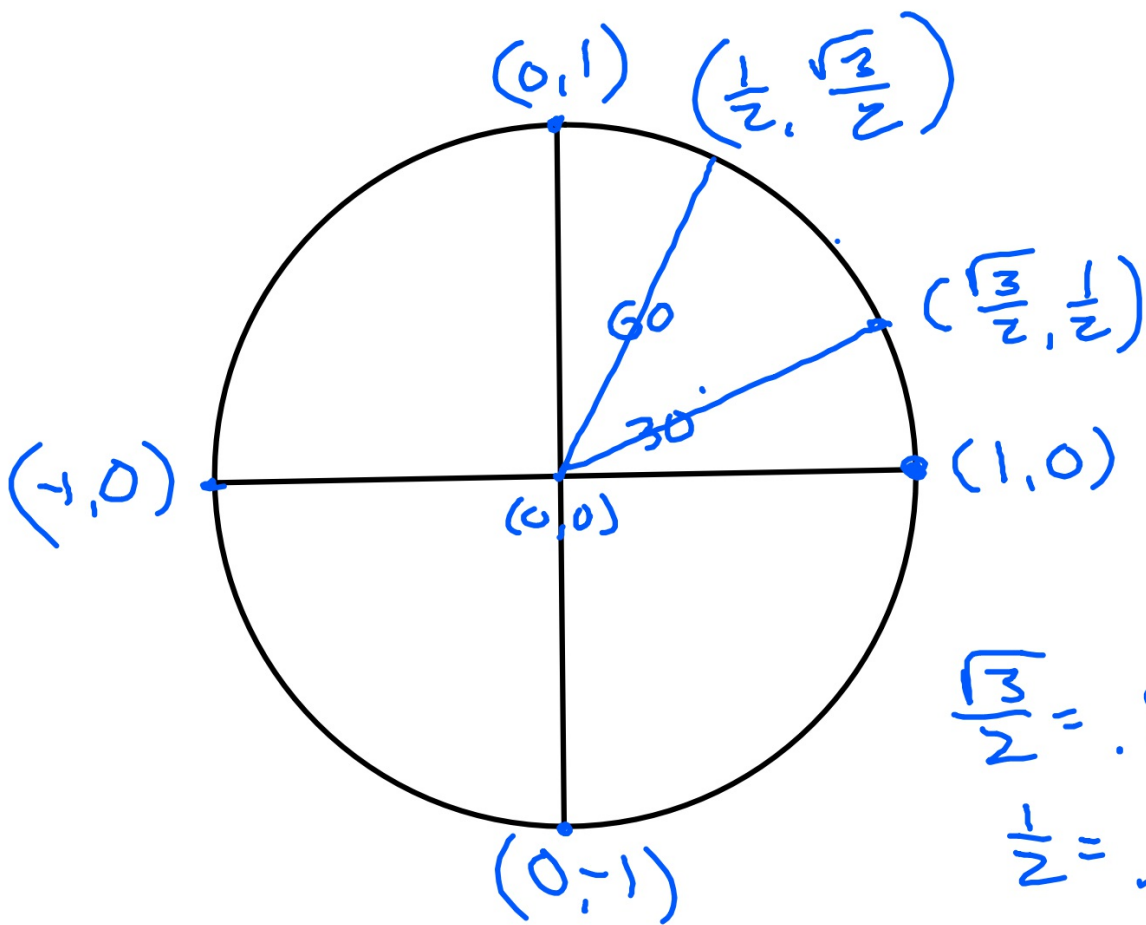


$$\frac{\sin 30^\circ}{1} = \frac{x}{1}$$

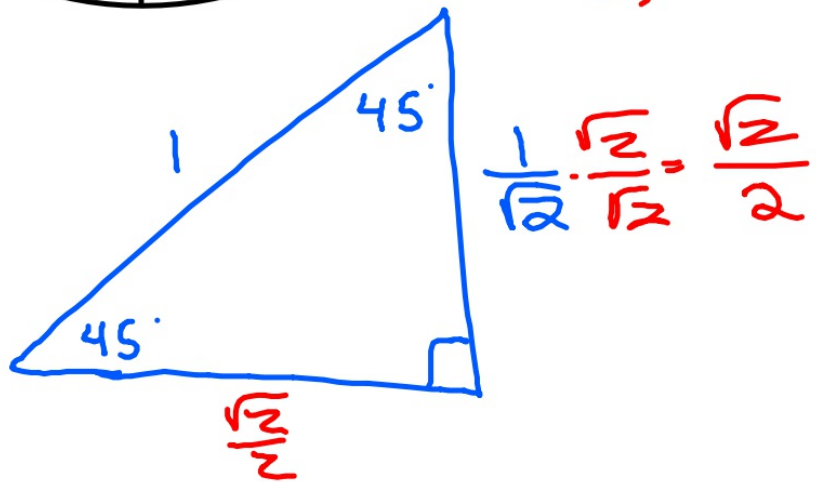
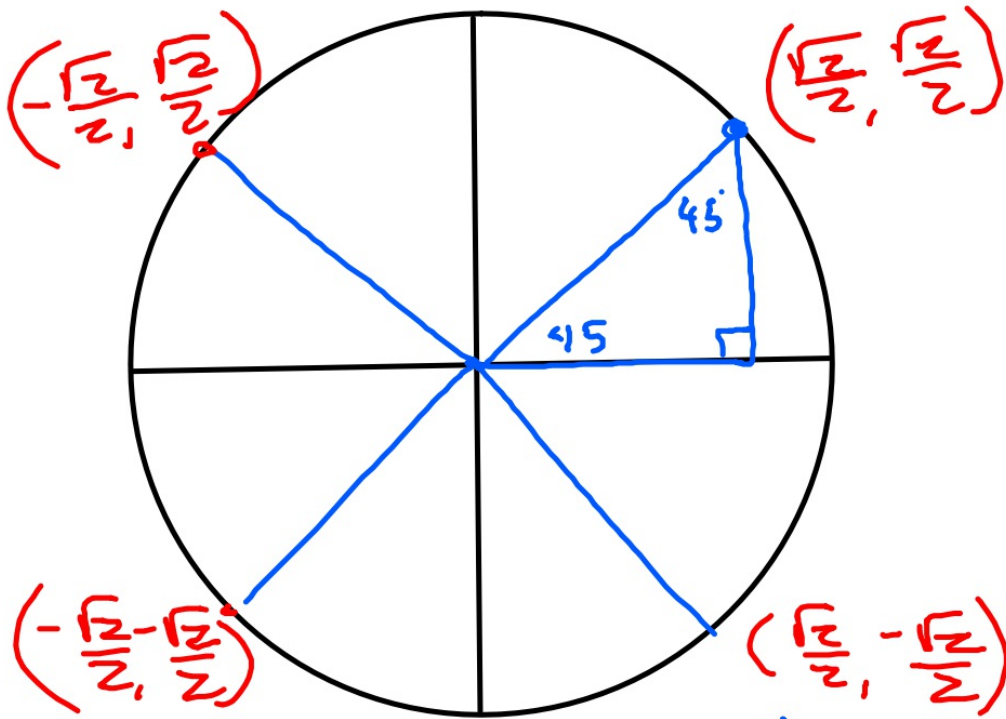
$$x = \sin 30^\circ$$

$\frac{\sqrt{3}}{2}$





$$\frac{\sqrt{3}}{2} = .8660$$
$$\frac{1}{2} = .5000$$



3-3-20 2nd Geo

- ① What is the surface area of a sphere with a radius of 6cm?



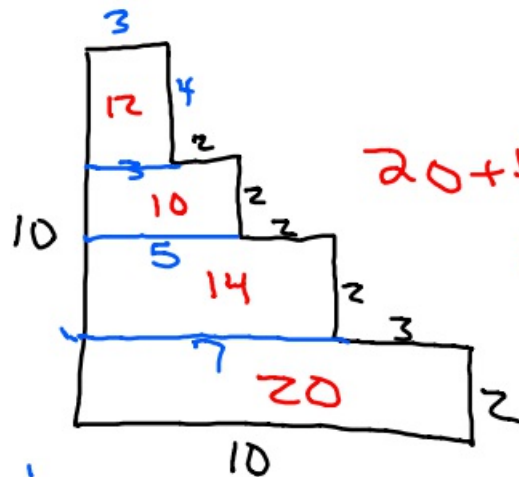
$$\begin{aligned} S.A. &= 4 \cdot \pi \cdot r^2 \\ &= 4 \cdot \pi \cdot 6^2 \\ &\approx 452.4 \text{ cm}^2 \end{aligned}$$

- ② How much soda does a soda can hold if it is 18cm tall and has a diameter of 12 cm?

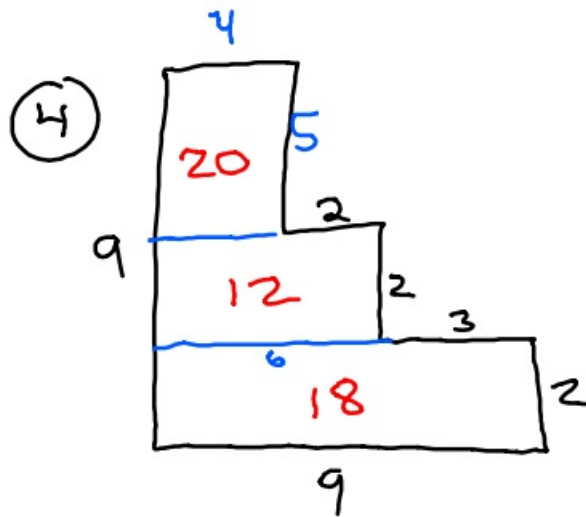


$$\begin{aligned} V &= \pi r^2 h \\ &= \pi \cdot 6^2 \cdot 18 \\ &\approx 2035.8 \text{ cm}^3 \end{aligned}$$

③

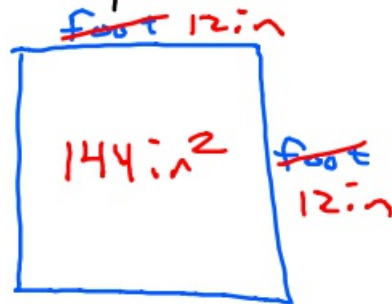


$$\begin{aligned} 20 + 14 + 10 + 12 \\ 56 \text{ cm}^2 \end{aligned}$$

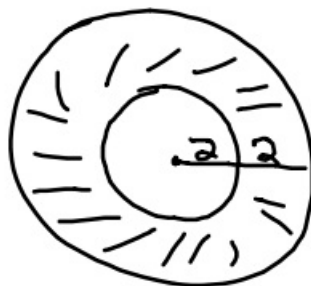


$$50 \text{ cm}^2$$

- ⑤ How many Square inches are in a Square foot?



⑥



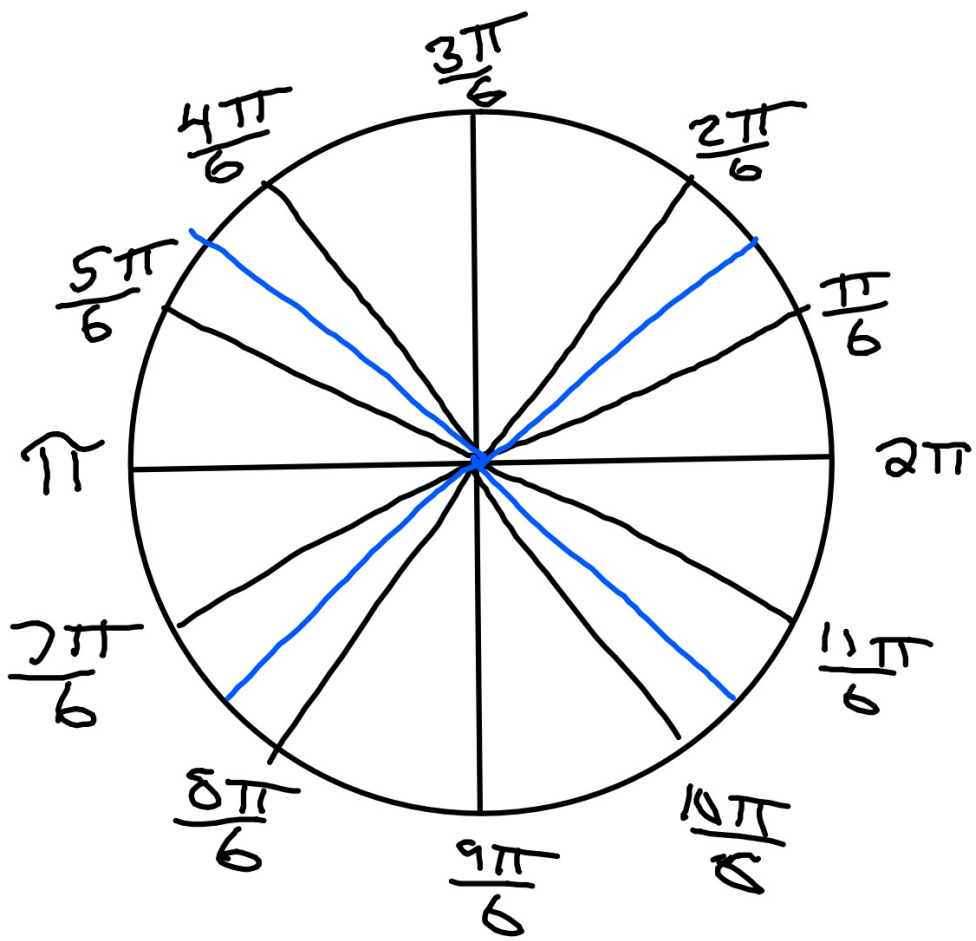
Whole-hole

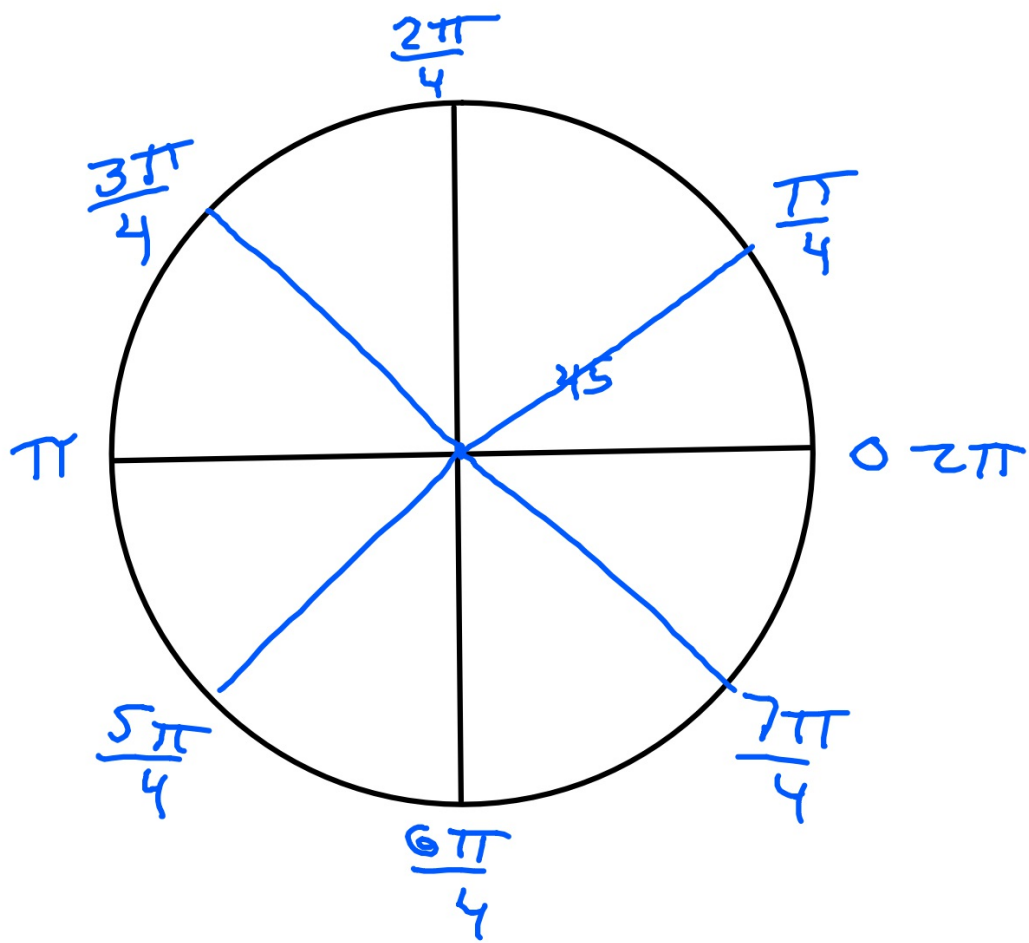
$$\pi \cdot 4^2 - \pi \cdot 2^2$$

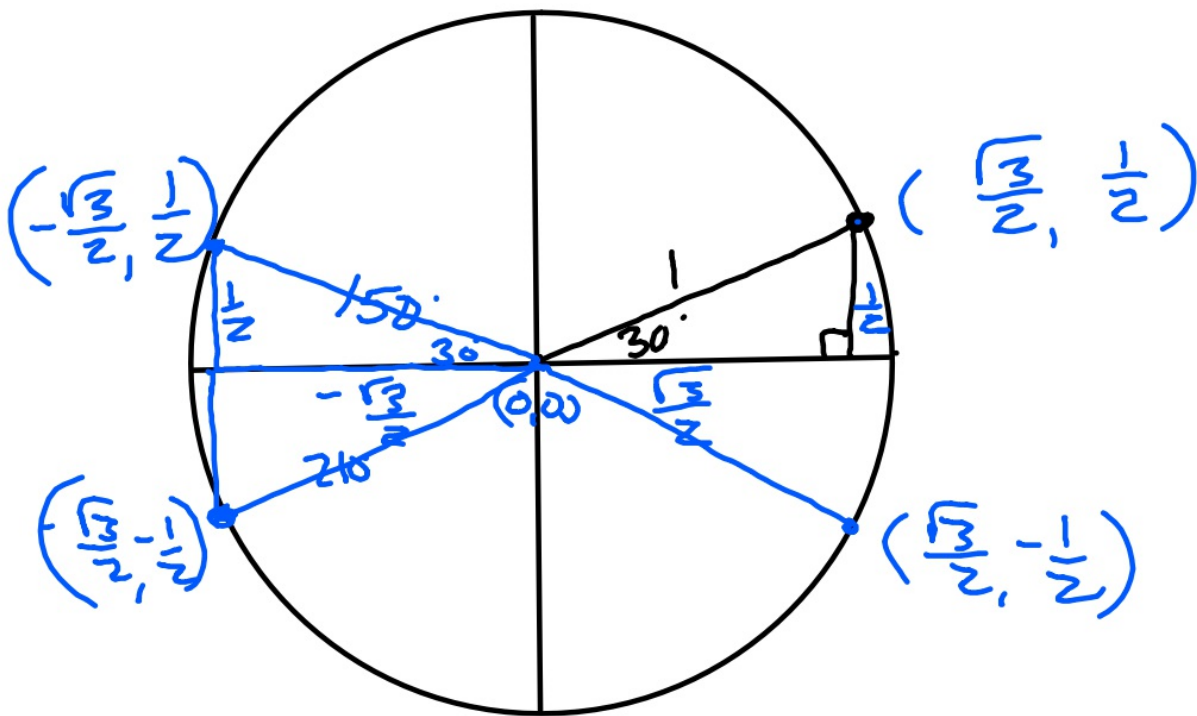
$$16\pi - 4\pi$$

$$12\pi$$

$$\approx 37.7 \text{ cm}^2$$

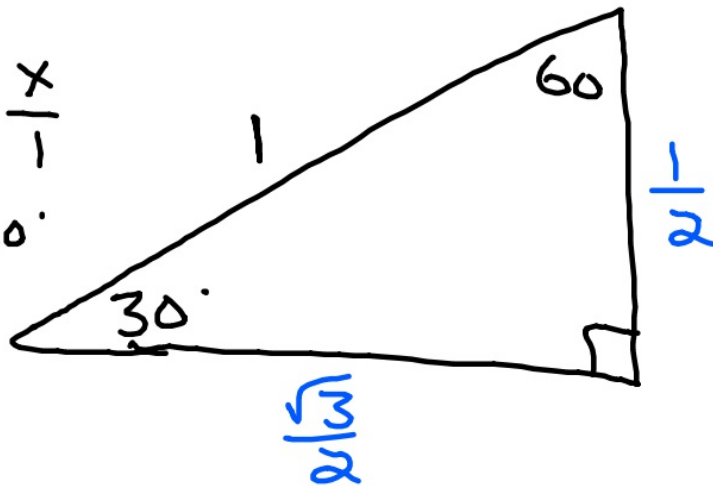


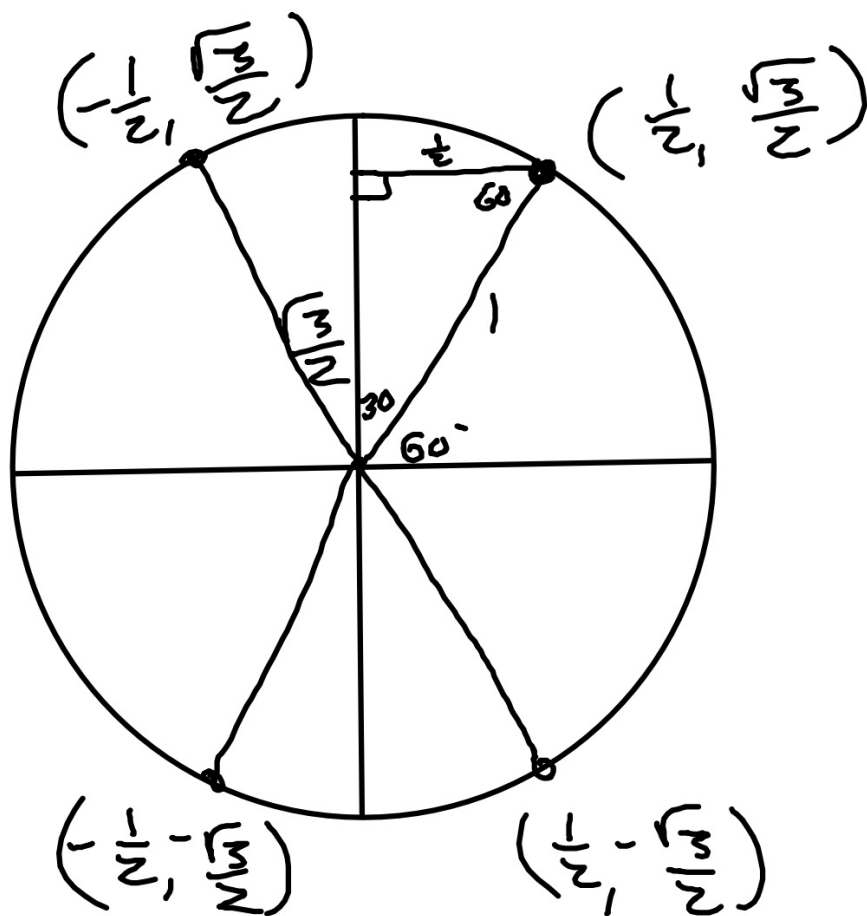


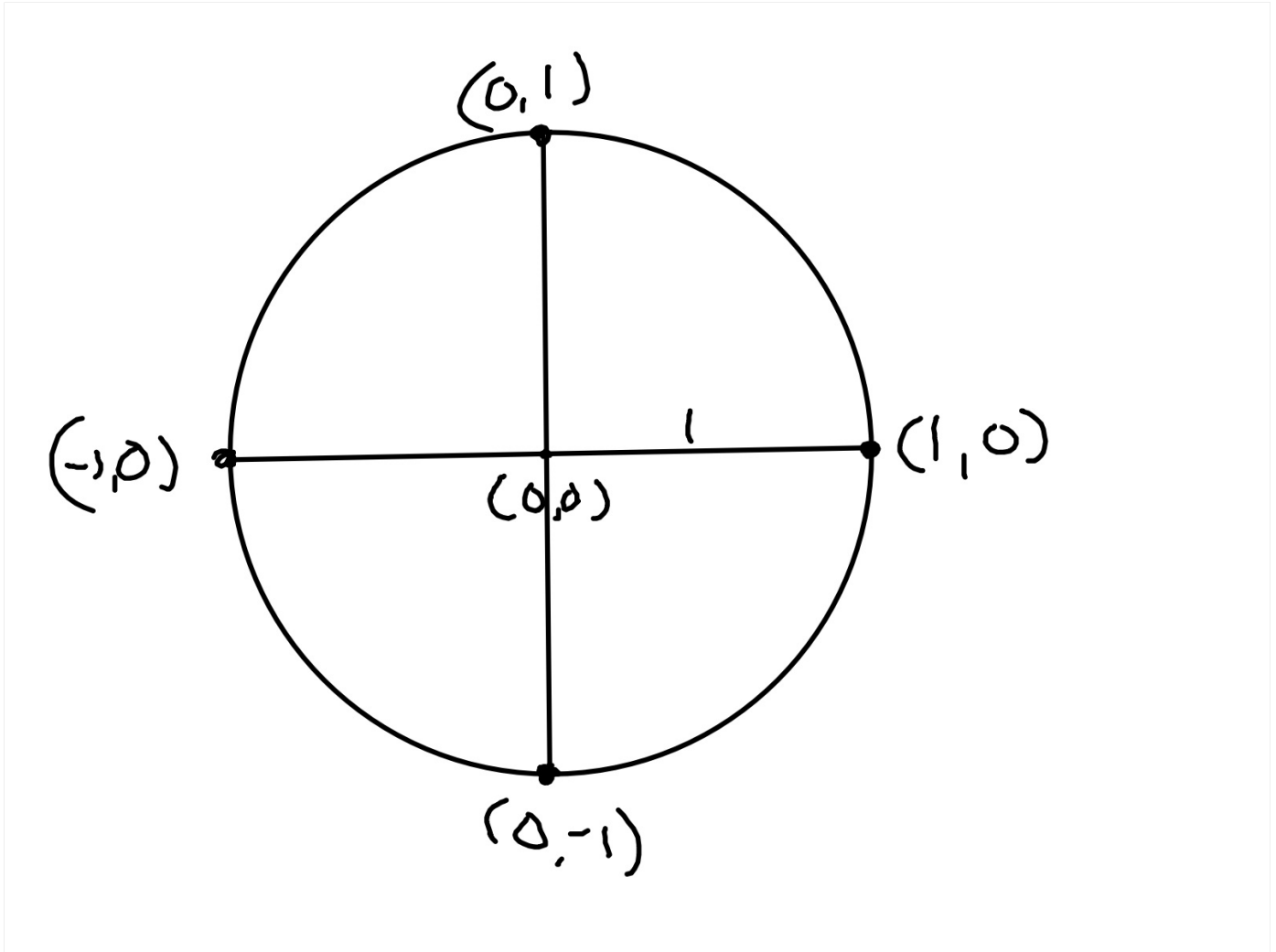


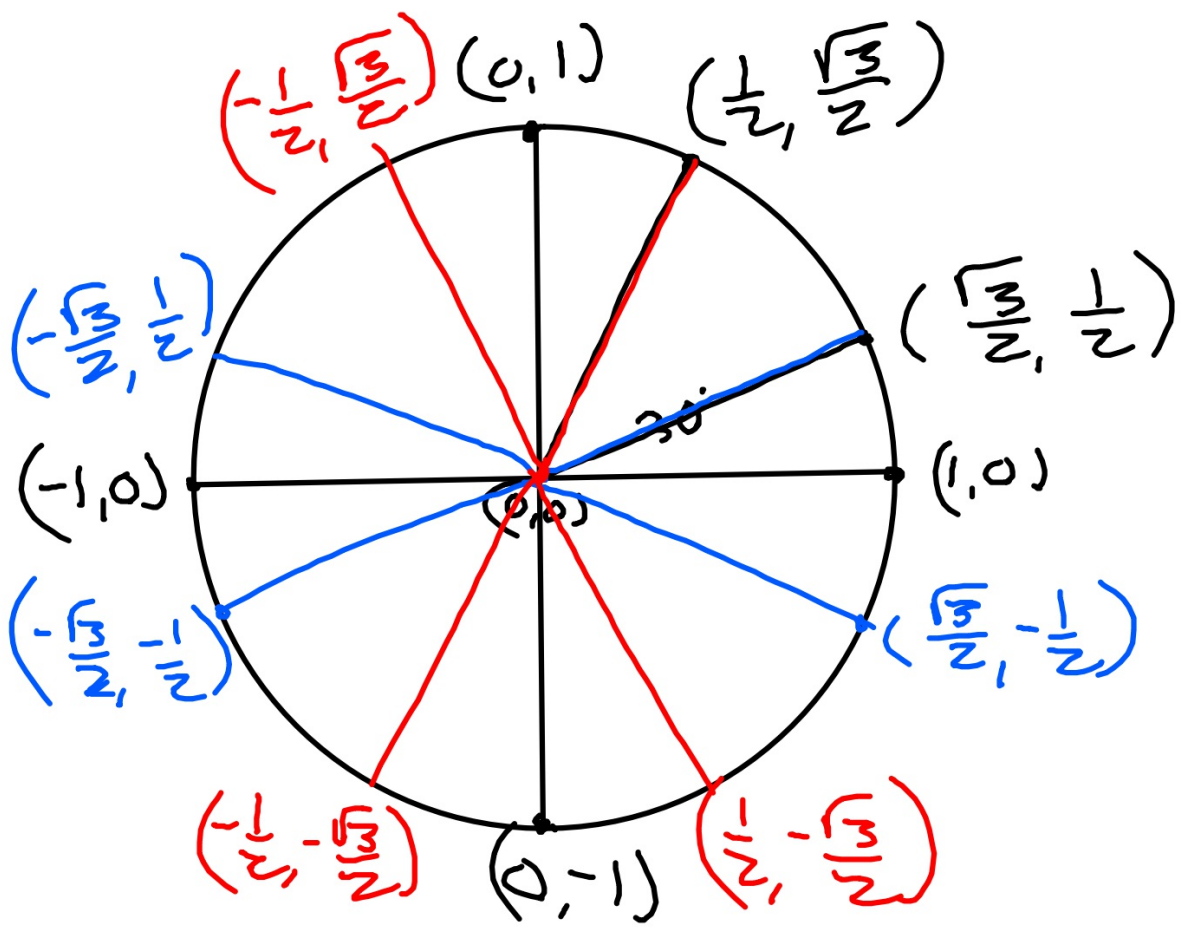
$$\frac{\sin 30^\circ}{1} = \frac{x}{1}$$

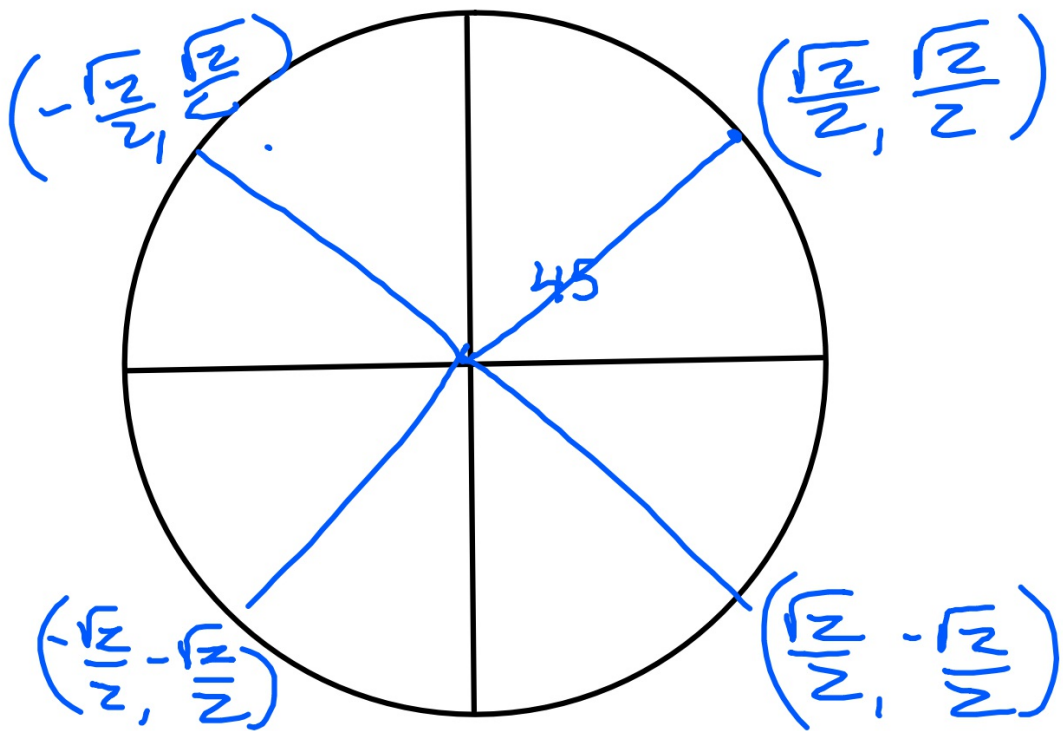
$$x = \sin 30^\circ$$

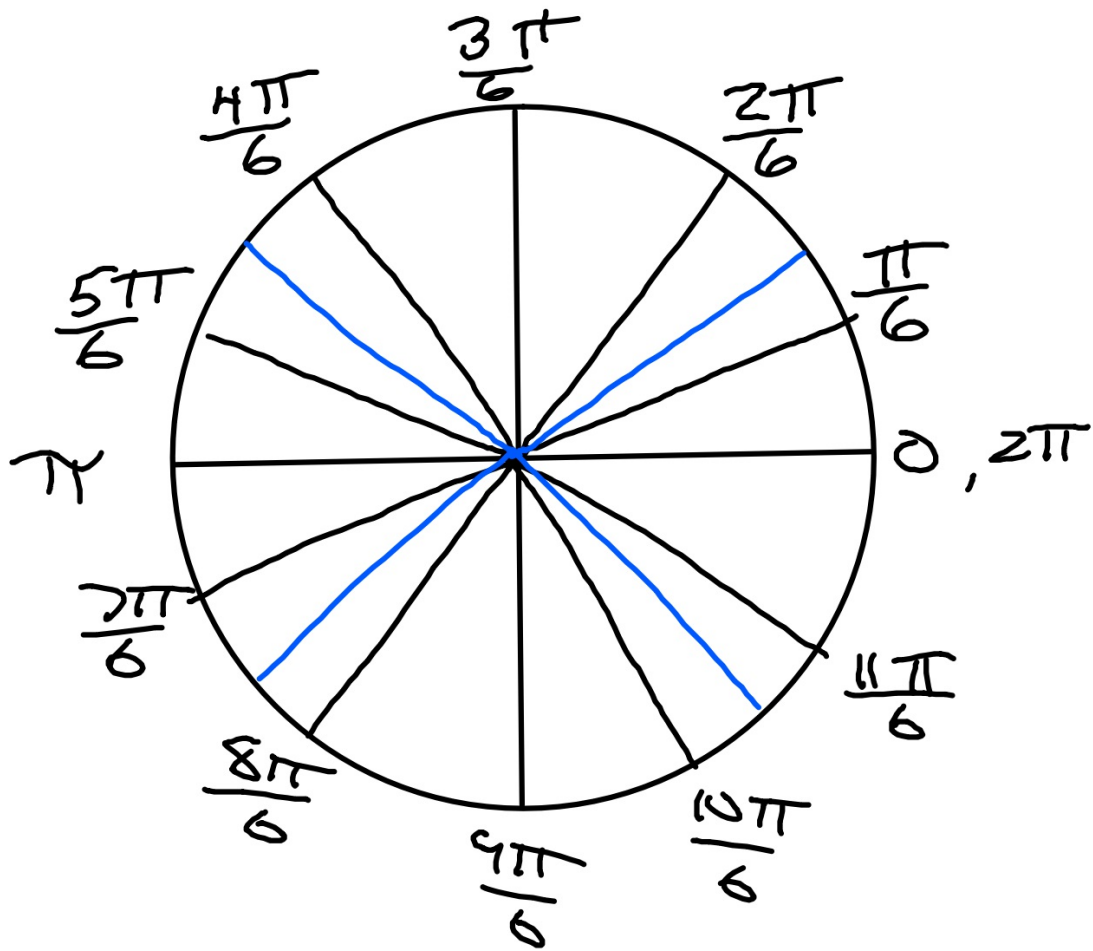


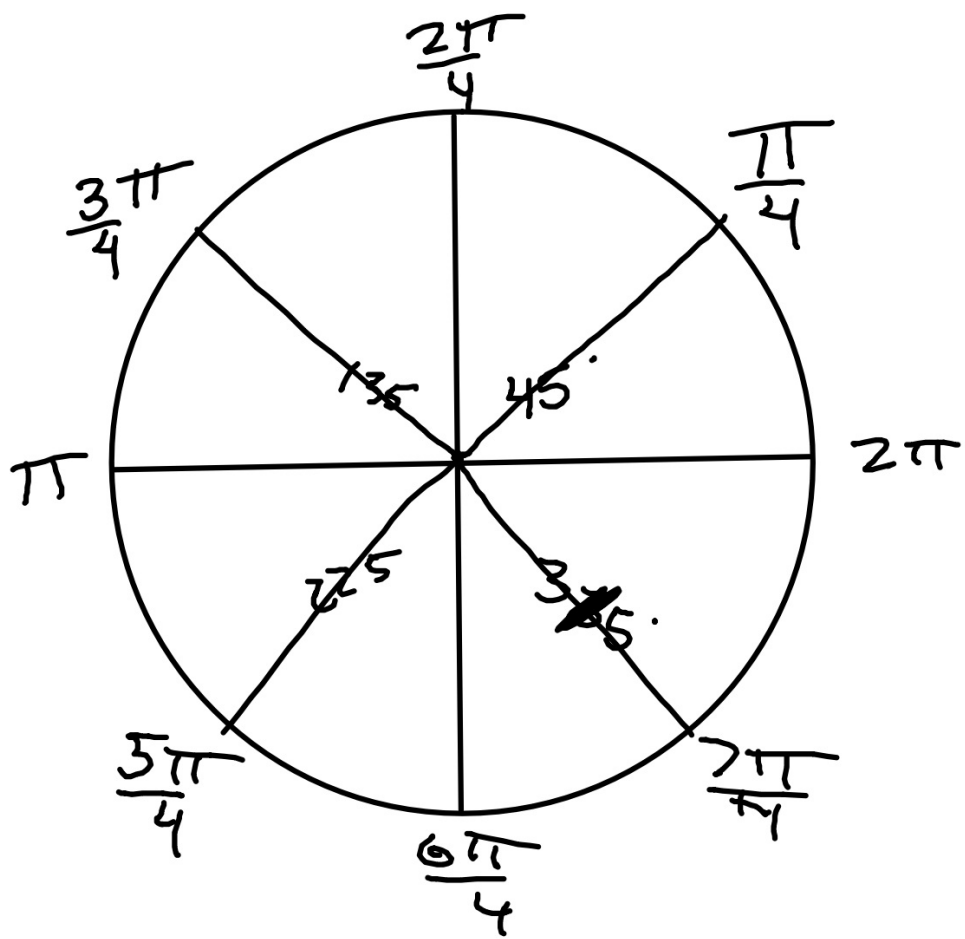


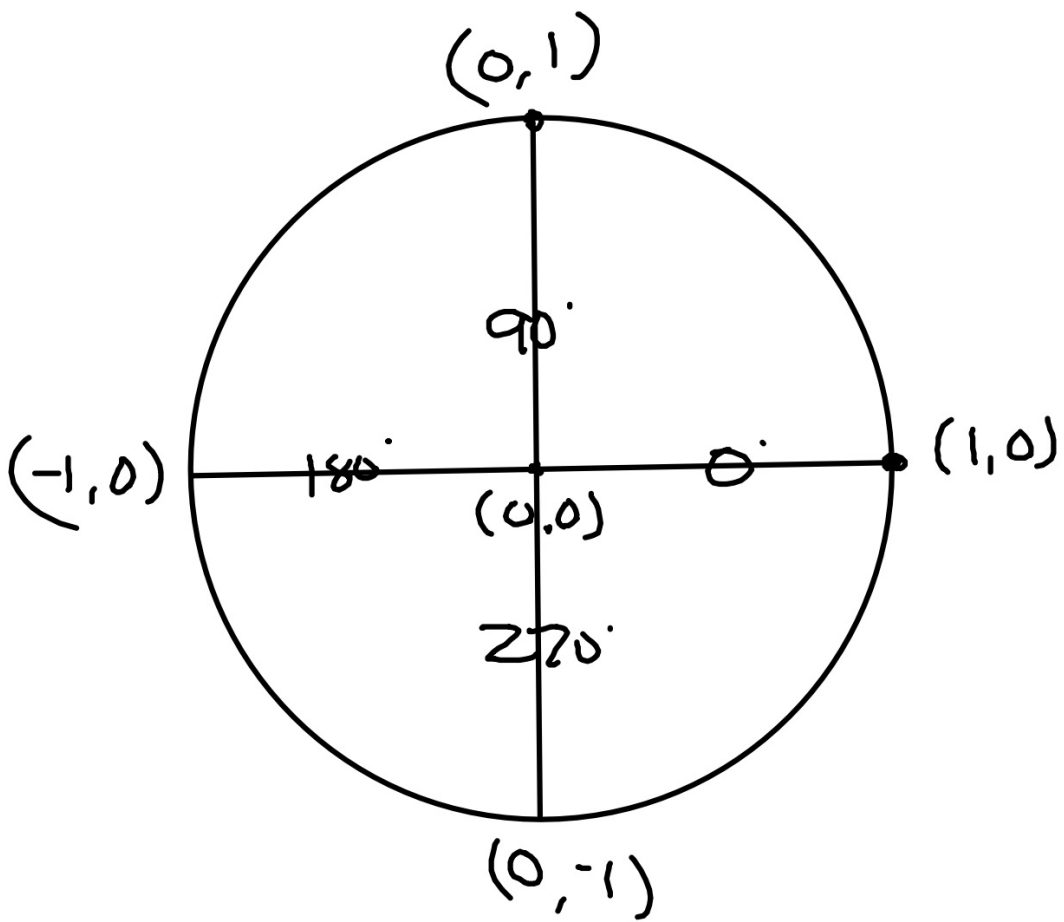


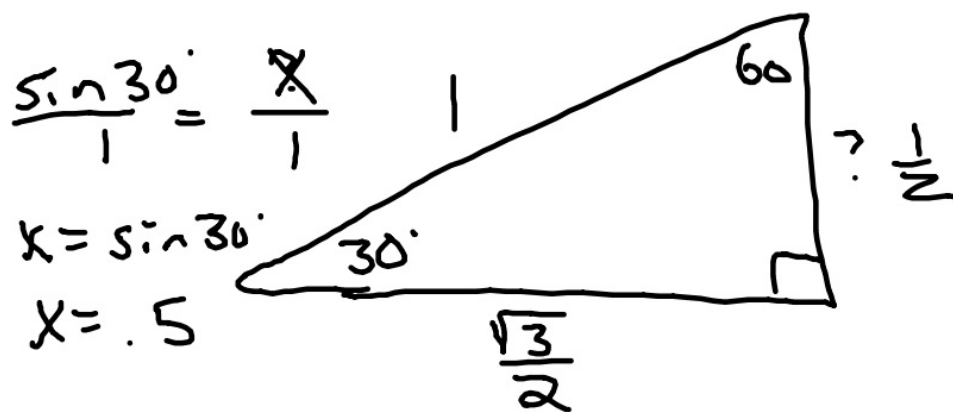
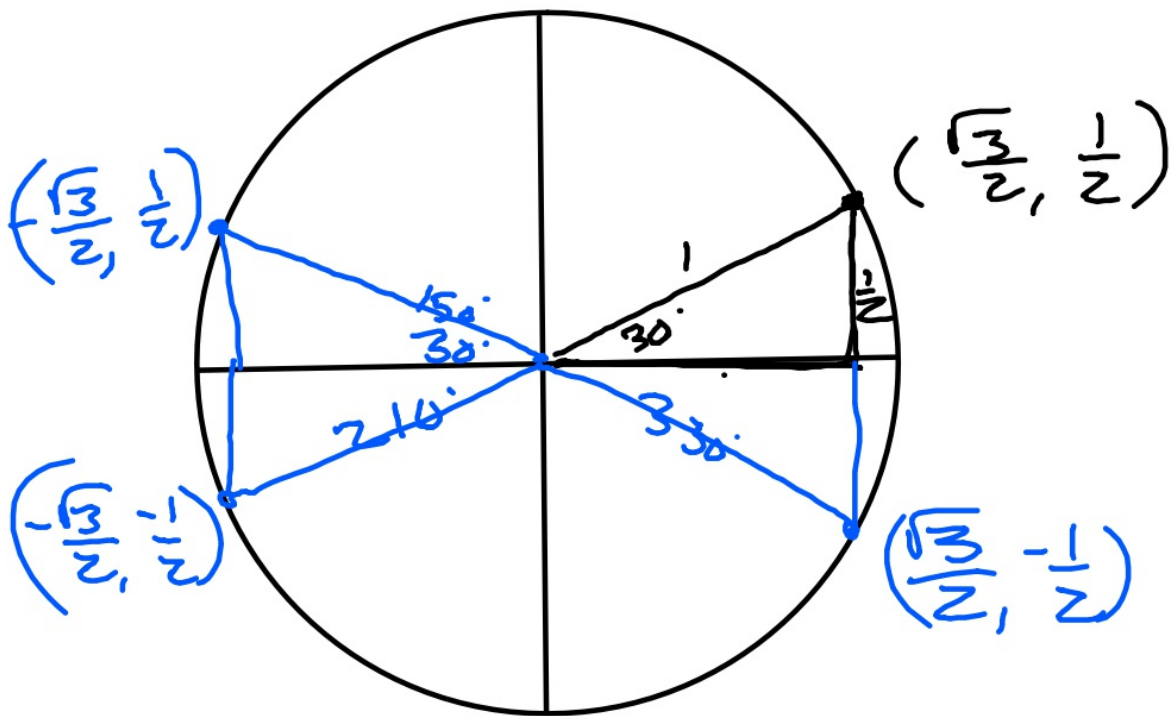


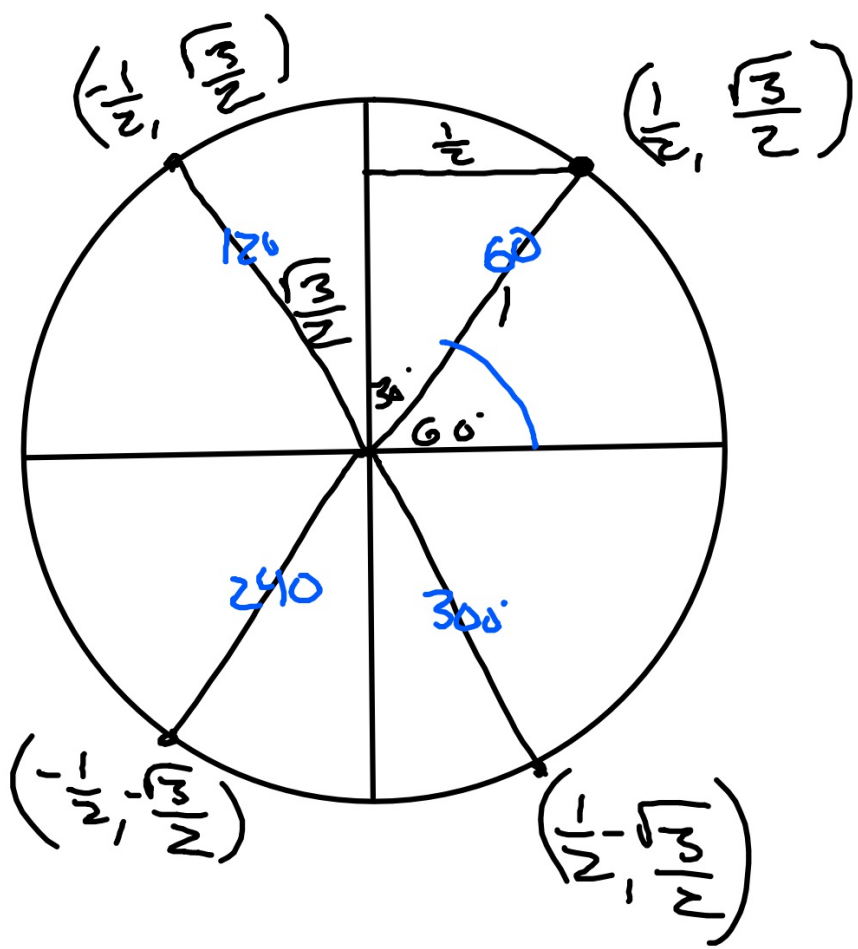


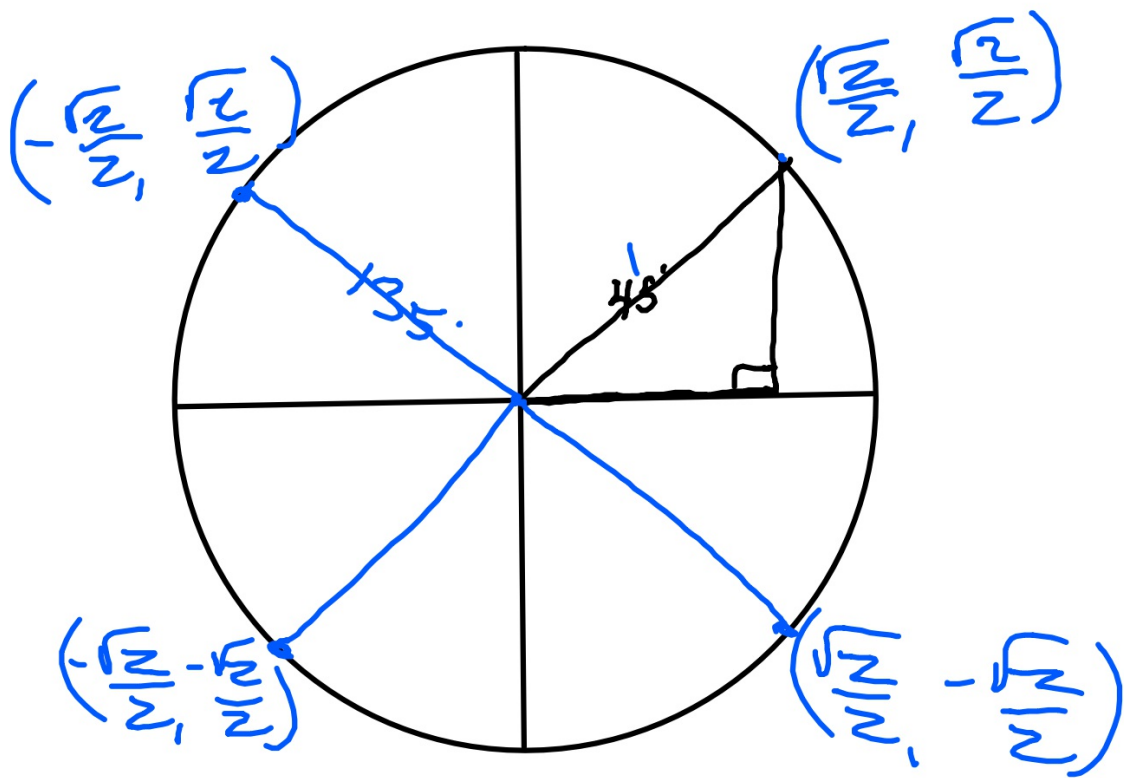


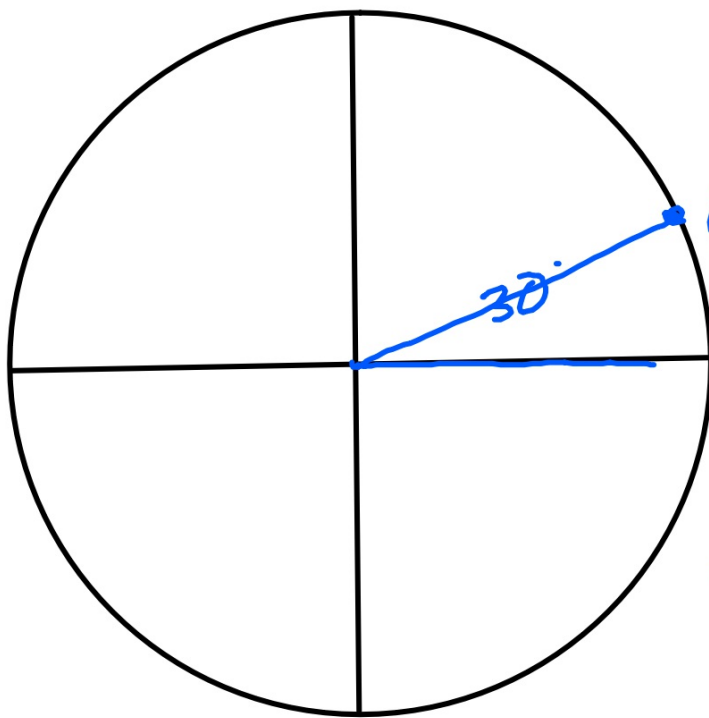












$$\left(\frac{\sqrt{3}}{2}, \frac{1}{2}\right)$$

$$\begin{aligned} \cos 30^\circ &= .8660 \\ \sin 30^\circ &= .5000 \end{aligned}$$