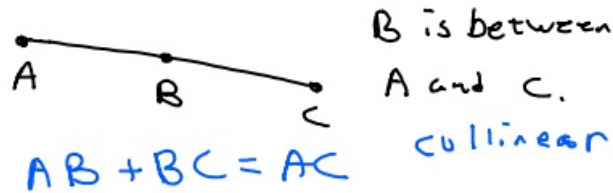
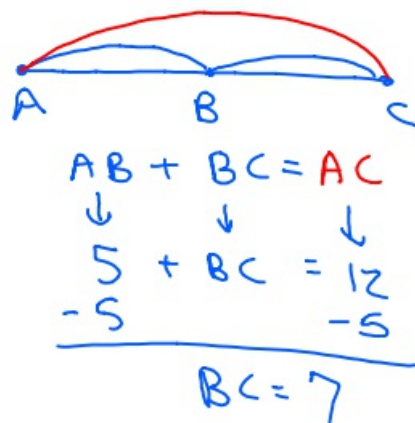


8-19-19 6th Geo

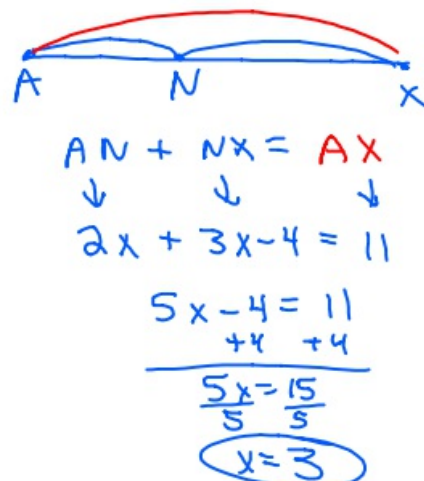
Betweenness of Points
Segment Line Addition



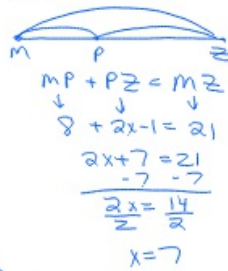
- ① B is between A and C.
 $AC = 12$ cm and $AB = 5$ cm. What
is BC?



- ② N is between A and X.
 $AN = 2x$ and $NX = 3x - 4$.
If $AX = 11$, what is x ?

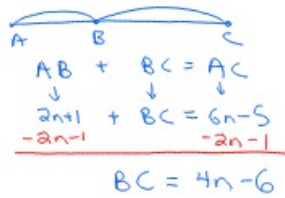


- ③ P is between M and Z.
 MP is 8 and PZ is $2x-1$.
 If $MZ = 21$, what is PZ?
 Find x first!

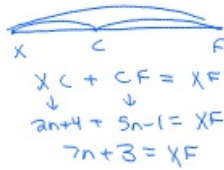


$$PZ = 2x - 1 = 2 \cdot 7 - 1 = 13$$

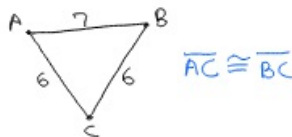
- ④ B is between A and C.
 $AB = 2n+1$ and $AC = 6n-5$.
 What is BC? (Expression Answer)



- ⑤ C is between X and F.
 If $CX = 2n+4$ and $CF = 5n-1$,
 what is XF?

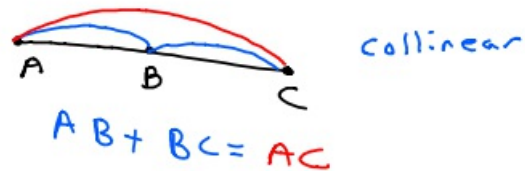


- ⑥ Congruent \cong

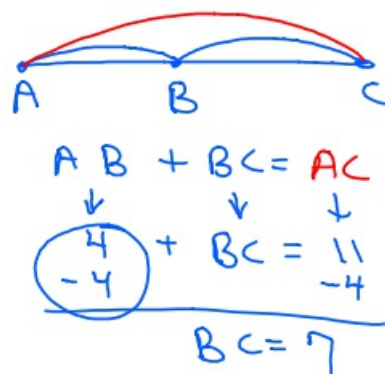


8-19-19 7th Geo

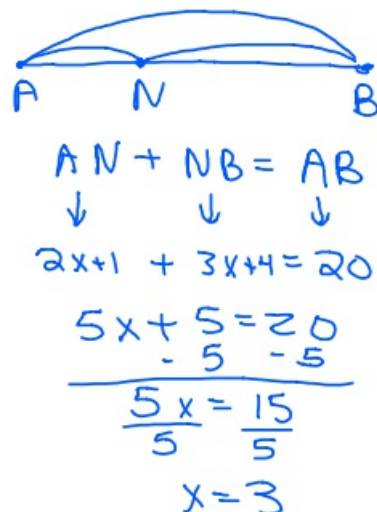
Betweenness of Points
Segment Addition Postulate



- ① B is between A and C.
If $AB = 4$ cm and $AC = 11$ cm,
what is BC ?



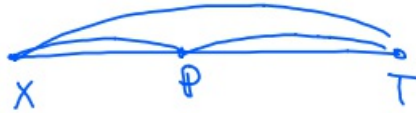
- ② N is between A and B.
 $AN = 2x + 1$ and $BN = 3x + 4$.
If $AB = 20$, what is x ?



③ P is between X and T.

$PX = 4$, $XT = 6n - 1$, and

$PT = 3n + 7$. What is n ?



$$XP + PT = XT$$

↓ ↓ ↓

$$4 + 3n + 7 = 6n - 1$$

$$11 + 3n = 6n - 1$$

-3n -3n

$$11 = 3n - 1$$

+1 +1

$$\frac{12}{3} = \frac{3n}{3}$$

$$4 = n$$

④ B is between A and C.

If $AB = 2n + 1$ and $AC = 6n + 8$,

What is BC ? (Expression Answer)



$$AB + BC = AC$$

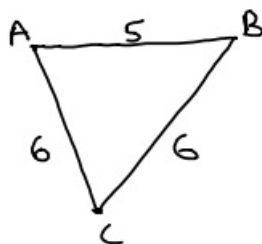
↓ ↓ ↓

$$2n + 1 + BC = 6n + 8$$

-2n - 1 -2n - 1

$$BC = 4n + 7$$

Congruent \cong



$$\overline{AC} \cong \overline{BC}$$