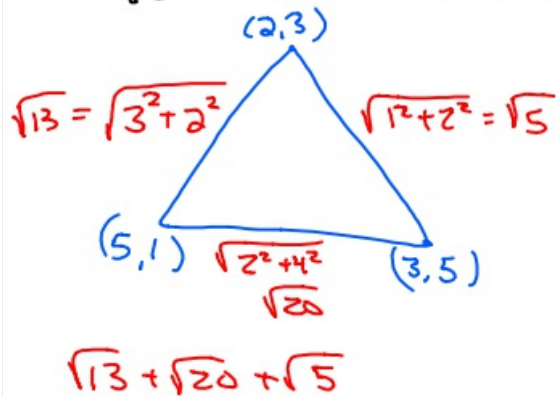


9-16-19 6th Geo

Review Ch. 2

- ① Give perimeter of Δ with vertices of $(2,3)$, $(3,5)$ and $(5,1)$



- ② Converse $\xleftarrow{\text{flip}}$
Inverse $\xrightarrow{\text{negate each}}$
Contrapositive $\xleftarrow{\text{flip}} \text{negate}$

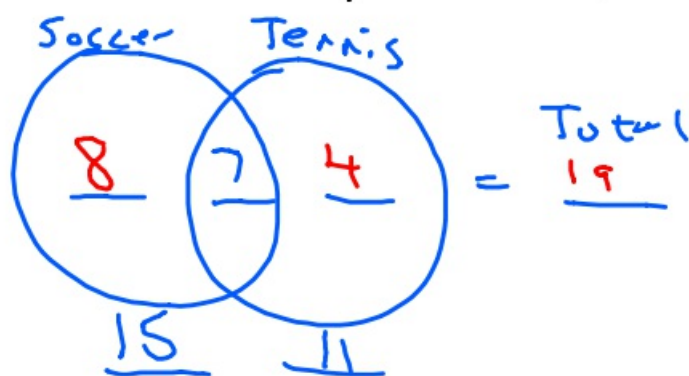
- ③ Give contrapositive of "if you don't like me, then you fail my class."

If you don't fail my class,
then you like me.

- ④ \wedge and
 \vee or
 \therefore therefore
 \leftrightarrow if and only if

⑤ If $AB + NP = BC + NP$, then
 $AB = BC$. Addition

⑥ In my class, everyone plays soccer or tennis. 15 play soccer and 11 play tennis. If 7 play both, how many kids are in my class? 19



⑦ Area of circle with a diameter of 10 cm?

$$\begin{aligned} A &= \pi \cdot r^2 \\ &= \pi \cdot 5^2 \\ &= 25\pi \text{ cm}^2 \leftarrow \text{exact} \\ &\approx 78.5 \text{ cm}^2 \end{aligned}$$

9-16-19

Ch. 2 Review

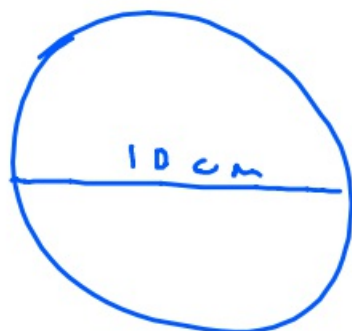
- ① Converse flip if and the then
Inverse negate each
Contrapositive flip and negate

- ② Give contrapositive to "if you are 10, you can drive."

If you can drive, then you are not 10.

- ③ \vee or
 \wedge and
 \therefore therefore
 \longleftrightarrow if and only if (iff)

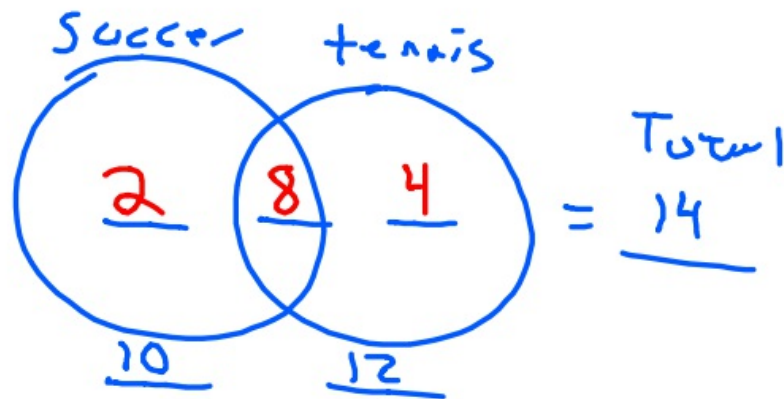
- ④ What is area of a circle with a diameter of 10 cm?



$$\begin{aligned} A &= \pi \cdot r^2 \\ &= \pi \cdot 5^2 \\ &= 25\pi \text{ cm}^2 \text{ exact} \\ &\approx 78.5 \text{ cm}^2 \end{aligned}$$

⑤ If $AB = BC$, then $AC + 5 = BC + 5$.
Addition

⑥ I have a total of 14 kids.
10 play soccer and 12 play
tennis. How many play both? 8



⑦ What is converse of $a \rightarrow \sim b$
 $\sim b \rightarrow a$