

9-26-17 5th Geo

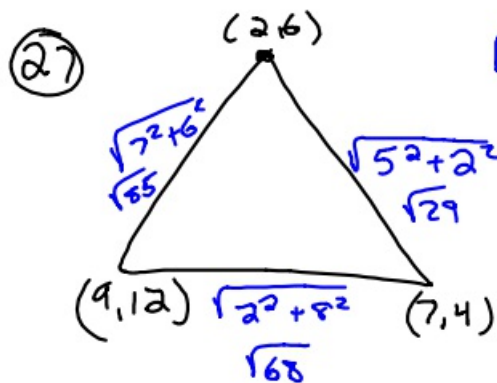
Ch. 2 P T 2

(26) $A = 380.13 \text{ cm}^2$
 $C = ?$

$$A = \pi \cdot r^2$$
$$\frac{380.13}{\pi} = \frac{\pi \cdot r^2}{\pi}$$
$$\sqrt{121} = \sqrt{r^2}$$
$$r = 11$$



$$C = \pi \cdot d$$
$$C = \pi \cdot 22$$
$$C \approx 69.1 \text{ cm}$$



$$D = \sqrt{\Delta x^2 + \Delta y^2}$$

$$P = \sqrt{85} + \sqrt{68} + \sqrt{29} \approx 22.9 \text{ cm}$$

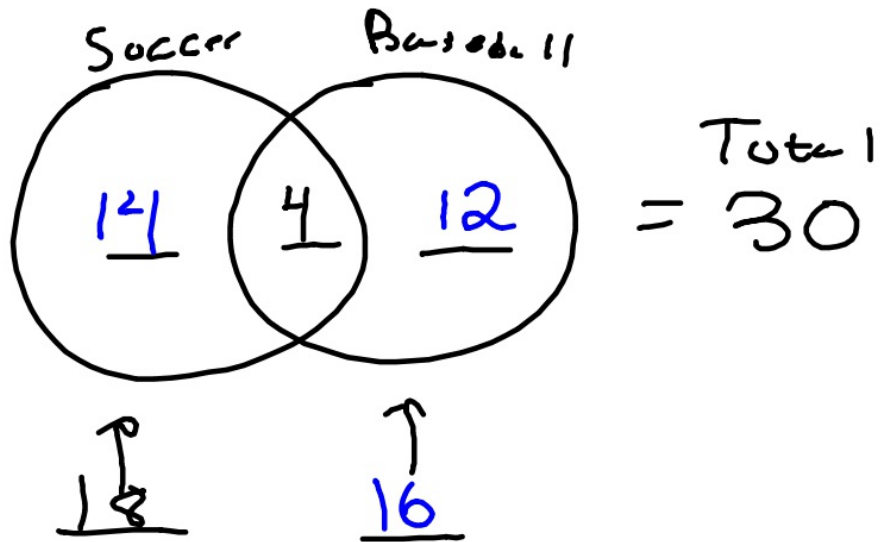
All dogs like to chase cats

(5) Converse:

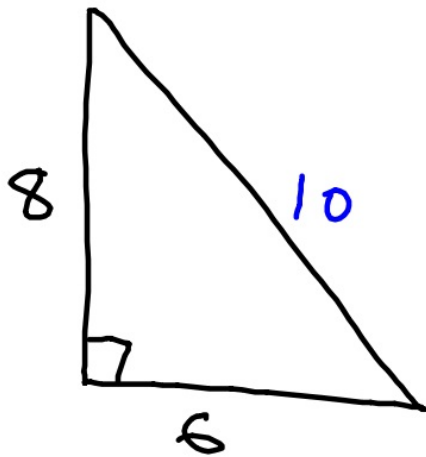
If it is a dog, then it likes to chase cats.

If it likes to chase cats, then it is a dog.

25



28



$$8^2 + 6^2 = c^2$$

$$c = 10$$

$$P = 10 + 6 + 8 = 24 \text{ cm}$$

$$A = \frac{1}{2} \cdot b \cdot h$$

$$\frac{1}{2} \cdot 6 \cdot 8 = 24 \text{ cm}^2$$

⑭ "If you drive in the left lane, then you are not a good driver" is represented by $p \rightarrow q$.

"If you are a good driver, then you don't drive in the left lane."
 $\sim q \rightarrow \sim p$

New practice

Property

① IF $AN - DT = CB - DT$, then
 $AN = CB$.

Addition

② IF $AN = CT - XY$ and

$AN + BX = NY$, then
 $CT - XY + BX = NY$.

Substitution

③ $\angle ABC = \angle ABC$ Reflexive

How many sides?

④ Hexagon $\rightarrow 6$

⑤ Decagon $\rightarrow 10$

⑥ Pentagon $\rightarrow 5$

⑦ Nonagon $\rightarrow 9$

9-26-17 6th Geo

Ch. 2 PT 2

(20) "If ^P you like Jim, you
are not a friend of Rick" is

represented by $P \rightarrow q$.

"If you are a friend of
Rick, you like Jim."

$$\sim q \rightarrow P$$

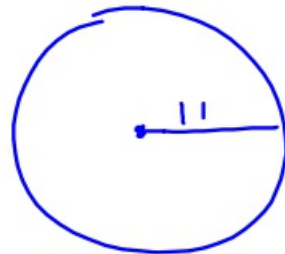
(26) $A = 380.13 \text{ cm}^2$

$$C = ?$$

$$A = \pi \cdot r^2$$
$$\downarrow$$
$$\frac{380.13}{\pi} = \frac{\pi \cdot r^2}{\pi}$$

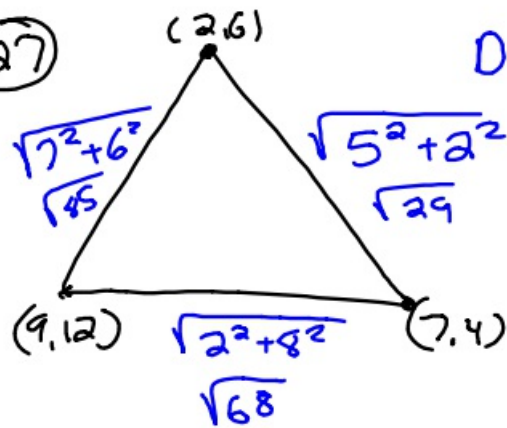
$$|21| \approx r^2$$

$$r = 11$$



$$C = \pi \cdot d$$
$$= \pi \cdot 22$$
$$\approx 69.1 \text{ cm}$$

(27)

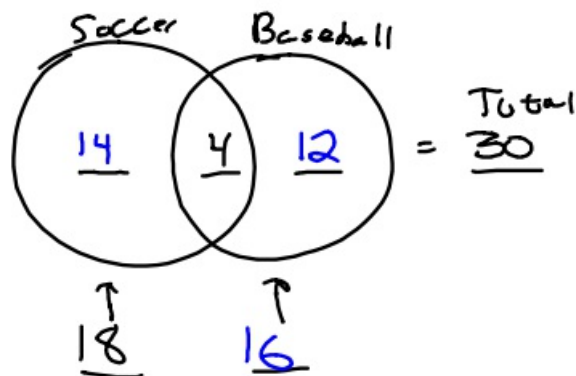


$$D = \sqrt{\Delta x^2 + \Delta y^2}$$

$$P = \sqrt{85} + \sqrt{68} + \sqrt{29}$$

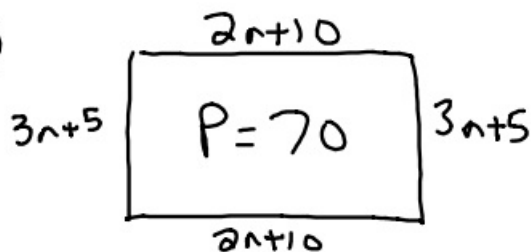
$$\approx 22.9$$

(25)
(17)



(15) $\angle 1 + \angle 2 = 90^\circ$ and $\angle 2 = \angle 5 + \angle 6$
 then $\angle 1 + \angle 5 + \angle 6 = 90$
 Substitution

(31)



$$2n+10 + 3n+5 + 2n+10 + 3n+5 = 70$$

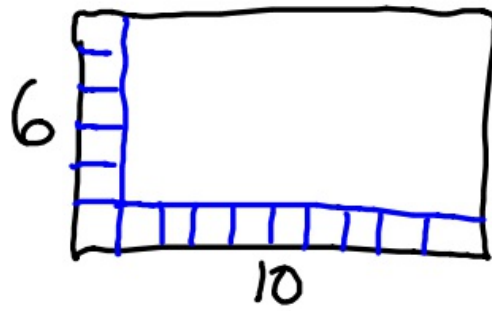
$$10n + 30 = 70$$

$$\begin{array}{r} -30 \quad -30 \\ \hline 10n = 40 \\ n = 4 \end{array}$$

$$10n = 40$$

$$n = 4$$

(29)



60 cm²

New Questions

① IF $AN - NT = BC - NT$, then

$AN = BC$.

Addition

② $\angle ABC = \angle ABC$ Reflexive

③ IF $AN = TY$, then

$AN - CX = TY - CX$.

Subtraction