

9-27-17 5th Geo

(A)

(B)

(C)

⋮

(N)

① If you are nice, then you are #1.

② If you like cats, then you can't eat.

From A-N, which is the inverse of
Statement 1.

① If $XY - 4 = BC$, then $XY = BC + 4$
Addition

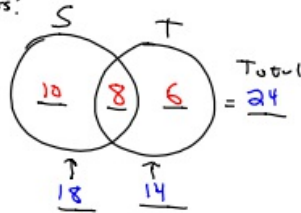
② If $AB = 6$ and $AB + BC = 10$, then
 $6 + BC = 10$.
Substitution

③ If $\angle A = \angle B$ and $\angle B = \angle C$, then
 $\angle A = \angle C$ Transitive

④ What is the inverse of
 $a \rightarrow b$?
 $\sim a \rightarrow \sim b$

⑤ and $\neg \wedge$
 or $\neg \vee$
 therefore $\neg \therefore$

⑥ I have a total of 24 kids.
 If 18 play soccer and 14 play
 tennis, how many play both
 sports?

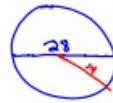


⑦ What is the area of a
 circle that has a diameter
 of 28 cm? Round to nearest
 whole number.

$$A = \pi r^2$$

$$A = \pi \cdot 14^2$$

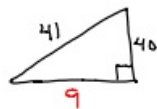
$$A \approx 616 \text{ cm}^2$$



⑧ Finish the statement according
 to the substitution property.

If $AB = CN + XY$ and
 $AB + TS = 10$, then
 $CN + XY + TS = 10$.

⑨ What is perimeter of



$$a^2 + 40^2 = 41^2$$

$$a^2 + 1600 = 1681$$

$$\begin{array}{r} a^2 + 1600 = 1681 \\ -1600 \quad -1600 \\ \hline a^2 = 81 \\ a = 9 \end{array}$$

$$P = 9 + 40 + 41 = 90 \text{ cm}$$

⑩ If circle has an area of about 628 cm², what was its radius?

$$A = \pi \cdot r^2$$

$$\frac{628}{\pi} = \frac{\pi \cdot r^2}{\pi}$$

$$\sqrt{200} = \sqrt{r^2}$$

$$r \approx 14$$

① If $AC = YN$ and $AC + 4 = 10$,
then $YN + 4 = 10$.

Substitution

② If $XY - 4 = BC$, then $XY = BC + 4$.

Addition

③ If $\angle A = \angle B$ and $\angle B = \angle C$,
then $\angle A = \angle C$.

Transitive

④ What is the inverse of

$$\sim a \rightarrow b$$

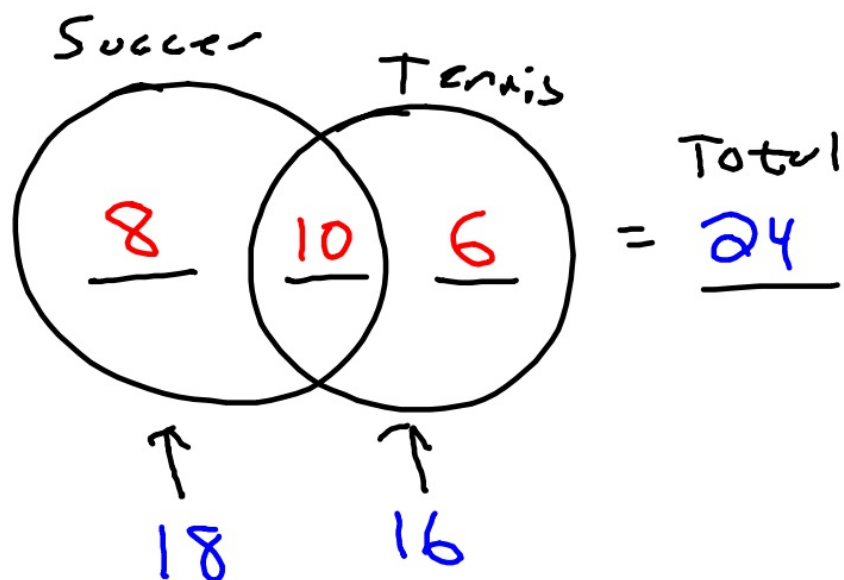
$$a \rightarrow \sim b$$

⑤ $\wedge \rightarrow$ AND

$\vee \rightarrow$ OR

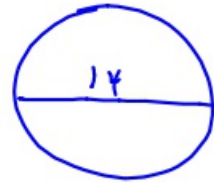
$\therefore \rightarrow$ Therefore

⑥ I have 24 kids. If 18 play soccer and 16 play tennis, how many play both?



- ⑦ Rounded to the nearest whole number, what is the area of a circle that has a diameter of 14 cm?

$$\begin{aligned}
 A &= \pi \cdot r^2 \\
 &= \pi \cdot 7^2 \\
 &= 49\pi \\
 &\approx 154 \text{ cm}^2
 \end{aligned}$$



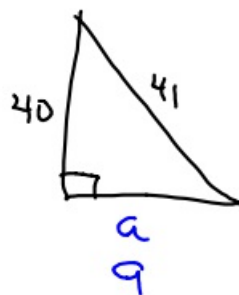
- ⑧ Using the substitution property, complete the sentence.

If $AB = CY + XN$ and

$AB + TX = 8$, then

$CY + XN + TX = 8$

- ⑨ What is the perimeter of



$$\begin{aligned}
 a^2 + b^2 &= c^2 \\
 a^2 + 40^2 &= 41^2 \\
 a^2 + 1600 &= 1681 \\
 &\quad -1600 \quad -1600 \\
 \hline
 \sqrt{a^2} &= \sqrt{81} \\
 a &= 9
 \end{aligned}$$

$P = 40 + 9 + 41 = 90 \text{ cm}$