

9-6-19 6th Geo

Ch. 1 Test

(9, 10)

Converse

Inverse

Contrapositive

① If you are nice, then
you can sit here

Converse: If you sit here, then
you are nice.

② If you live in Virginia,
then you live in America.

Converse: If you live in America,
then you live in Virginia.

Inverse: If you don't live in VA,
then you don't live in America.

Contrapositive: If you don't live in
America, then you don't
live in Virginia.

③ Change to an if, then statement.

Boys are smelly.

If you are a boy, then you are smelly.

④ Change to an if, then:

TV's are heavy.

If it is a TV, then it is heavy.

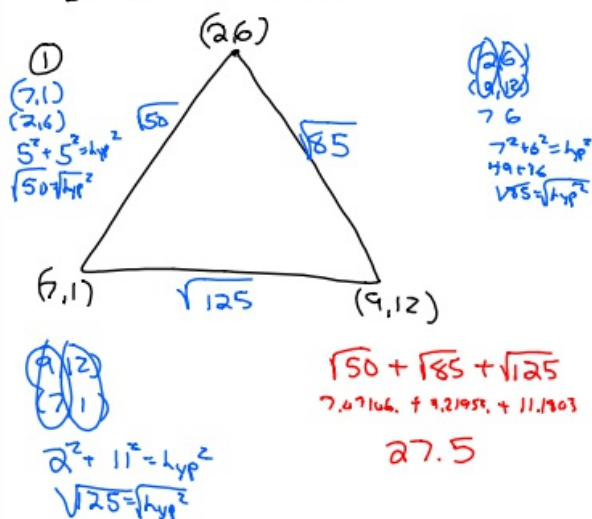
⑤ Give inverse of "If $x=2$, then $8x=16$."

If $x \neq 2$, then $8x \neq 16$.

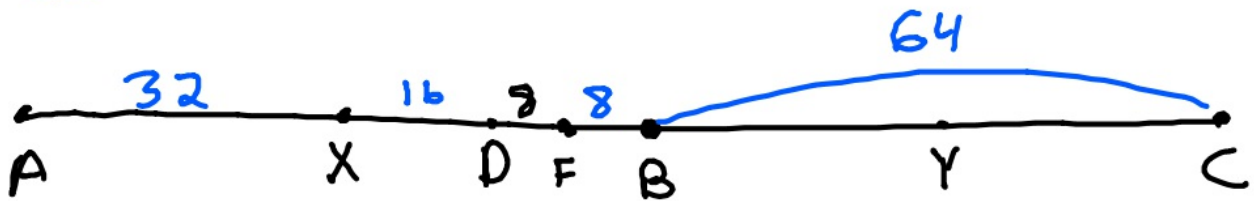
⑥ Give contrapositive to "If you are not 10, then you are good."

If you are not good, then you are 10.

Bonus on Test.



③



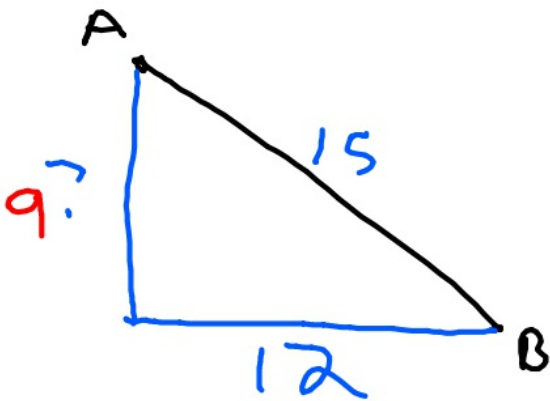
128

② $AB = 15$

$A = (3, 4)$

$B = (15, y)$

12



$$4 - y = 9 \text{ or } -9$$

13, -5

$$12^2 + 9^2 = 15^2$$

$$9^2 = 81$$

$$9 = 9$$

9-6-19 7th Geo

Converse

Inverse

Contrapositive

① If you live in Radford, then you live in Virginia.

Converse: If you live in VA, **False** then you live in Radford.

Inverse: If you don't live in **False** Radford, then you don't live in VA.

Contrapositive: If you don't live **True** in VA, then you don't live in Radford.

② Give me the Inverse of

"If you are not nice, then you are a bully."

If you are nice, then you are not a bully.

③ Put in "if, then" form
Boys are smelly.

If you are a boy, then you
are smelly.

④ Put in "if, then" form
TVs are heavy.

If it is a TV, then it is heavy.

⑤ Give Contrapositive of
"if $x=5$, then $2x=10$."

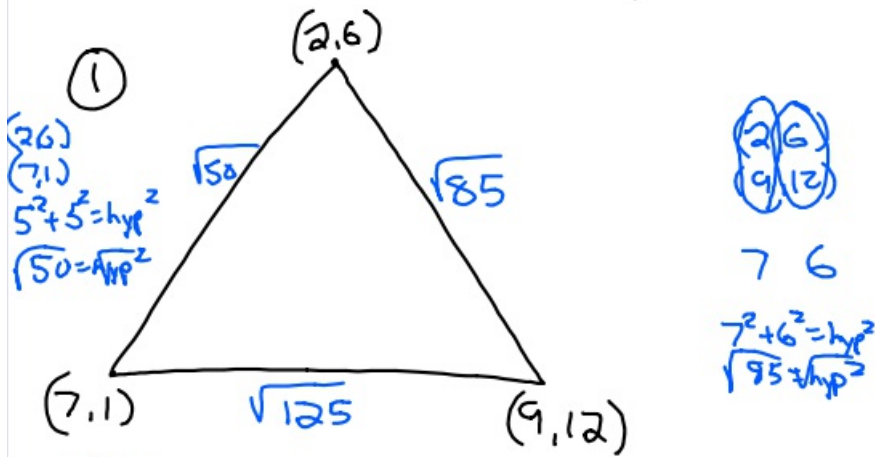
If $2x \neq 10$, then $x \neq 5$.

⑥ Give converse of
Girls are awesome.

If you are a girl, you are awesome.

✓ If you are awesome, you are
a girl.

Ch. 1 Test Bonus questions



$(2,6)$
 $(9,12)$
 $7, 6$
 $7^2 + 6^2 = \text{hyp}^2$
 $\sqrt{95} = \text{hyp}$



$2^2 + 11^2 = \text{hyp}^2$
 $\sqrt{125} = \text{hyp}$

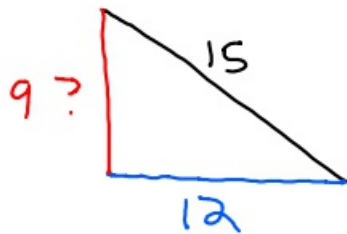
$\sqrt{50} + \sqrt{125} + \sqrt{85}$
 27.5

② $AB = 15$

$A = (3, 4)$

$B = (15, y)$

12



$9^2 + 12^2 = 15^2$

$9 = 9$

$4 - y = 9$ or -9

$y = 13$ or -5

③



128