

# Geometry Chapter 10 Practice Test 1

Name \_\_\_\_\_

- \_\_\_\_\_ 1. What is the volume of a sphere with a radius of 10 cm?
- \_\_\_\_\_ 2. What is the surface area of a sphere with a radius of 6 cm?
- \_\_\_\_\_ 3. What volume of a pyramid with a square base of 5 cm and a height of 6 cm?
- \_\_\_\_\_ 4. What is the surface area of a cylinder with a radius of 4 cm and a height of 10 cm?
- \_\_\_\_\_ 5. How much more area does a 10 inch pizza have than an 8 inch pizza?
- \_\_\_\_\_ 6. Box A is 8 cm by 8 cm by 5 cm. Box B is 4 cm by 4 cm by 2 cm. If box B is put into box A, how much room (volume) is left in box A?
- \_\_\_\_\_ 7. How much volume is left in a 10 cm cube if a 9 cm cube is placed inside the 10 cm cube?
- \_\_\_\_\_ 8. How much volume is left inside a 10 cm sphere if a 9 cm sphere is placed inside the 10 cm sphere? Assume that the number given is the sphere's diameter
- \_\_\_\_\_ 9. A dog is tied to a stake with a 12 foot rope. How much area does the dog have to play in?
- \_\_\_\_\_ 10. If a dog is tied to a stake with a 20 foot rope, how many full laps does the dog have to run in a circle to run a mile (5,280 feet)?

Find the area or the area of the shaded section for the below shapes.

Figure 11

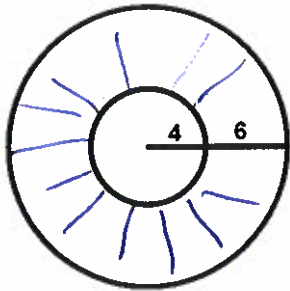


Figure 12

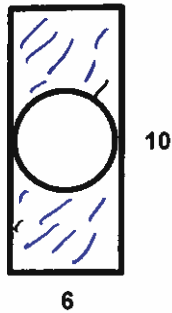


Figure 13

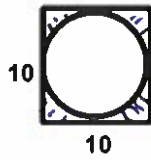


Figure 14

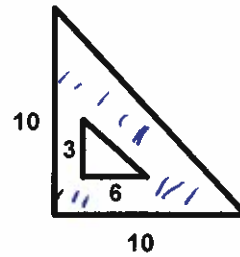


Figure 15

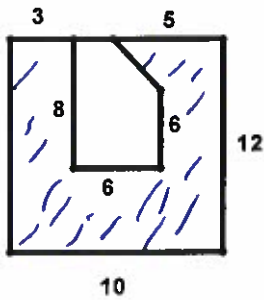


Figure 16

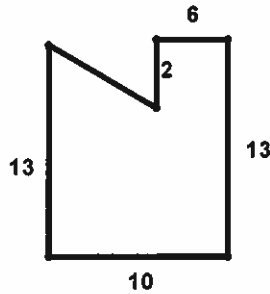


Figure 17

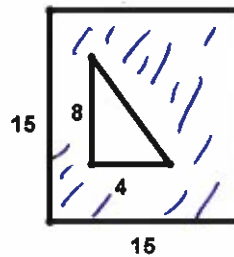


Figure 18

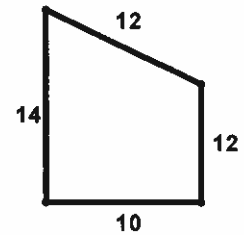


Figure 19

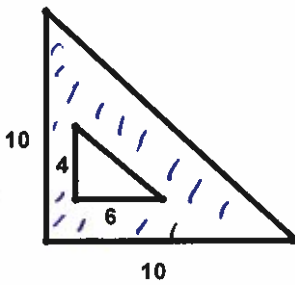


Figure 20

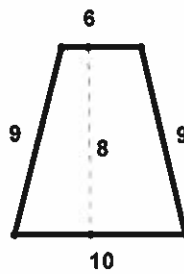


Figure 21

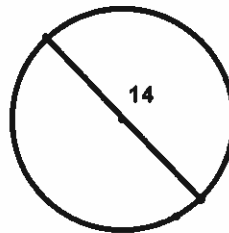


Figure 22

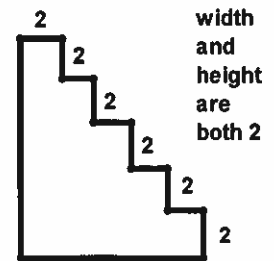


Figure 11 = \_\_\_\_\_

Figure 12 = \_\_\_\_\_

Figure 13 = \_\_\_\_\_

Figure 14 = \_\_\_\_\_

Figure 15 = \_\_\_\_\_

Figure 16 = \_\_\_\_\_

Figure 17 = \_\_\_\_\_

Figure 18 = \_\_\_\_\_

Figure 19 = \_\_\_\_\_

Figure 20 = \_\_\_\_\_

Figure 21 = \_\_\_\_\_

Figure 22 = \_\_\_\_\_